

Amendments		
Issue No.	Date	Description
-	-	-
-	-	-

© Stratascan Ltd - 2013

Plotting parameters

Maximum +2nT (black)
Minimum -2nT (white)

Client
ARCHAEOLOGICAL SERVICES & CONSULTANCY LTD

Project Title **GEOPHYSICAL SURVEY - DACORUM AREA, HERTFORDSHIRE** Job No. **J3349**

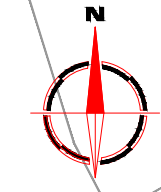
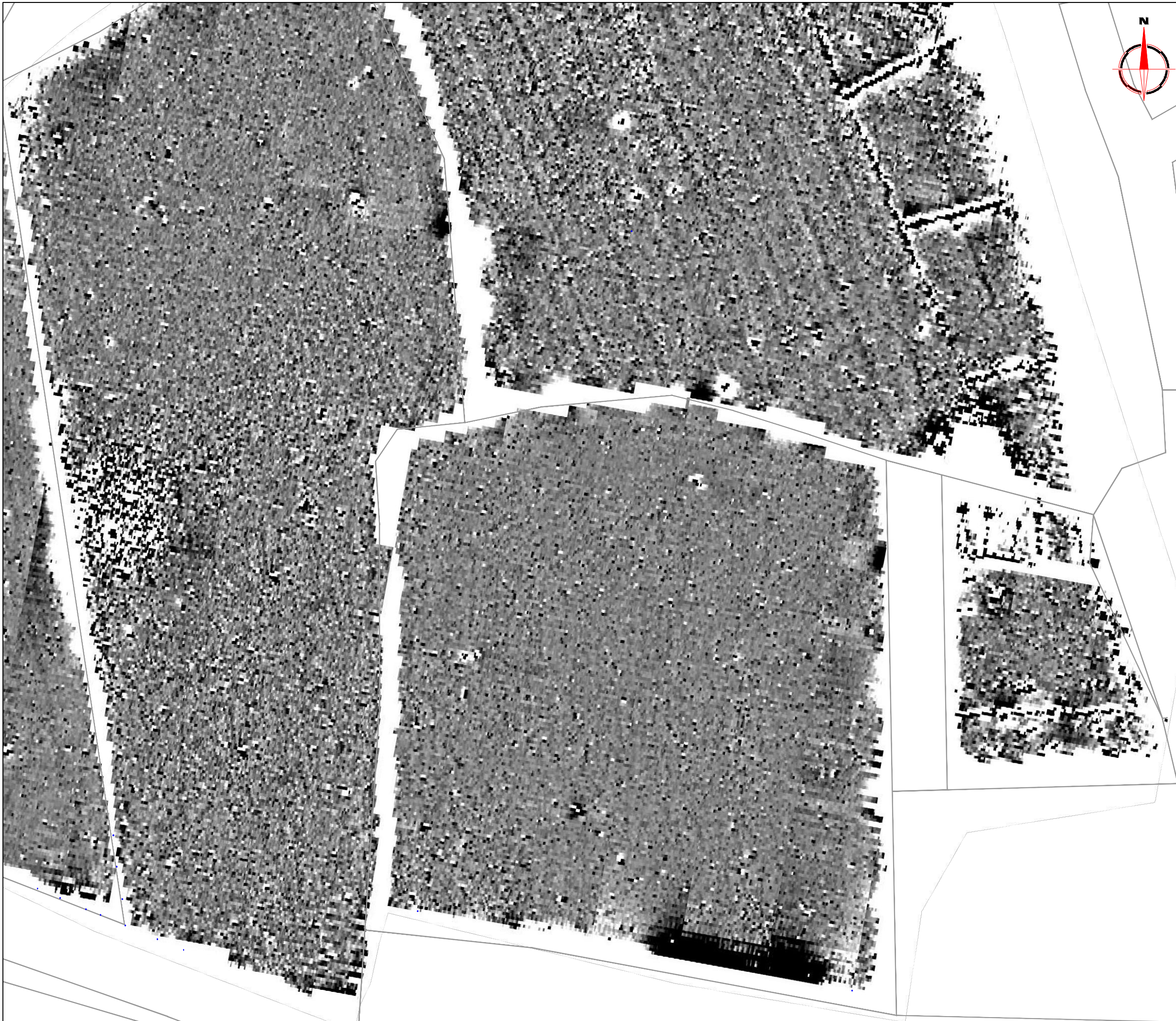
Subject
PLOT OF MINIMALLY PROCESSED GRADIOMETER DATA - AREA LA5 - NORTH

STRATASCAN™
GEOPHYSICS FOR ARCHAEOLOGY AND ENGINEERING

VINEYARD HOUSE T: 01684 592266
UPTON UPON SEVERN E: info@stratascan.co.uk
WR8 0SA www.stratascan.co.uk

Scale 1:1250

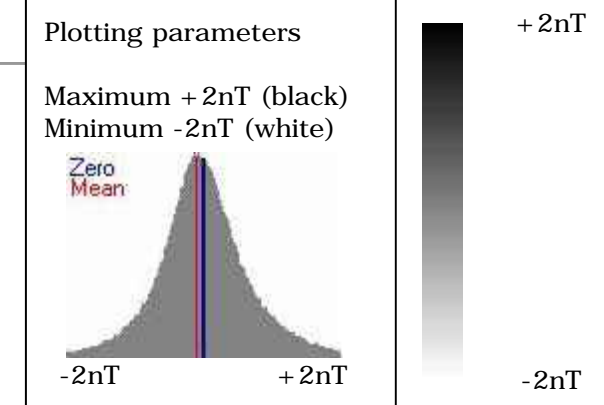
Plot A3	Checked by DGE	Issue No. 01
Survey date MAY 2013	Drawn by TR	Figure No. 20



Amendments

Issue No.	Date	Description
-	-	-
-	-	-

© Stratascan Ltd - 2013



Client
ARCHAEOLOGICAL SERVICES & CONSULTANCY LTD

Project Title Job No. J3349
GEOPHYSICAL SURVEY - DACORUM AREA, HERTFORDSHIRE

Subject
PLOT OF MINIMALLY PROCESSED GRADIOMETER DATA - AREA LA5 - SOUTH

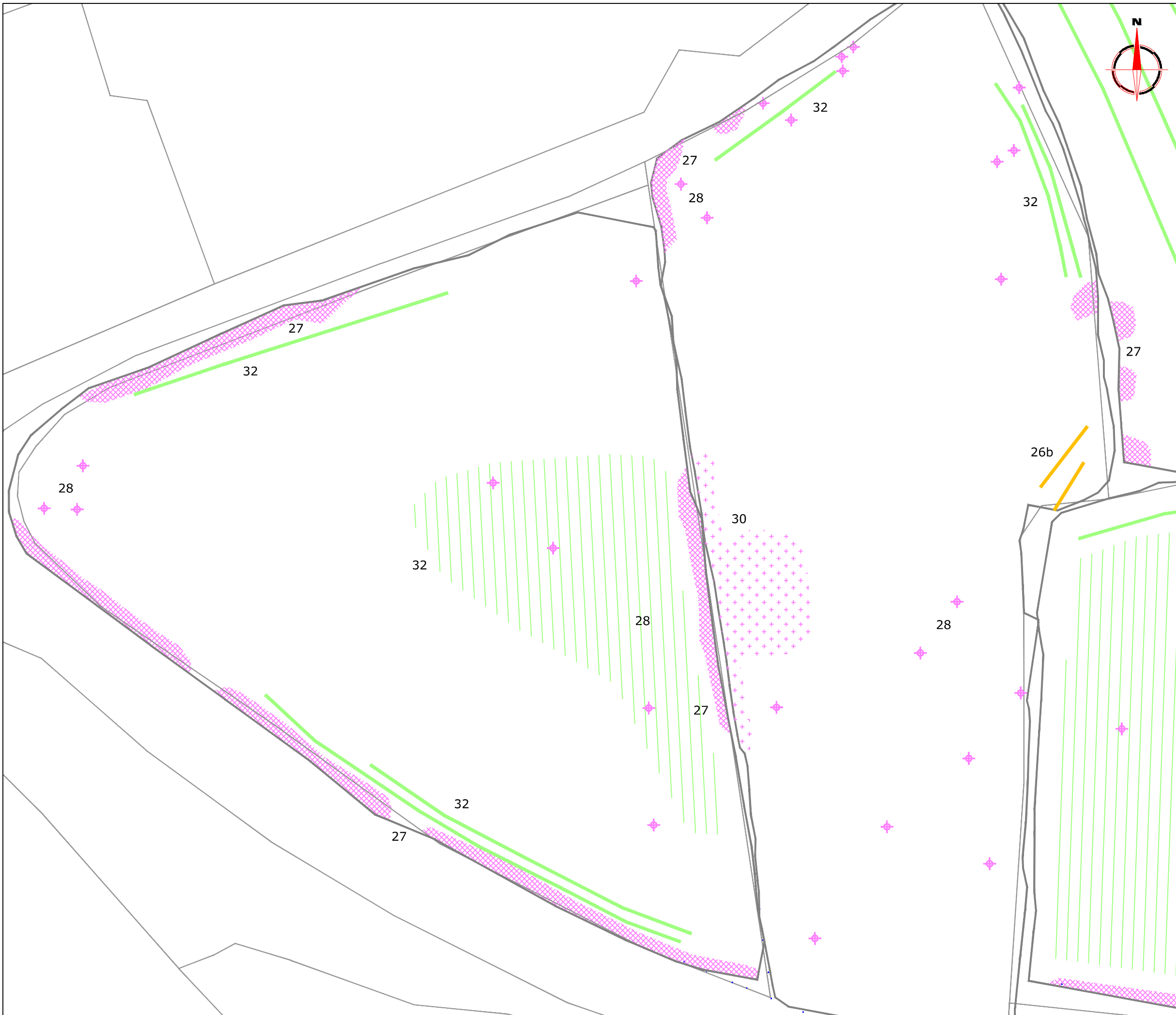
STRATASCAN™
GEOPHYSICS FOR ARCHAEOLOGY AND ENGINEERING

VINEYARD HOUSE T: 01684 592266
UPTON UPON SEVERN E: info@stratascan.co.uk
WR8 0SA www.stratascan.co.uk

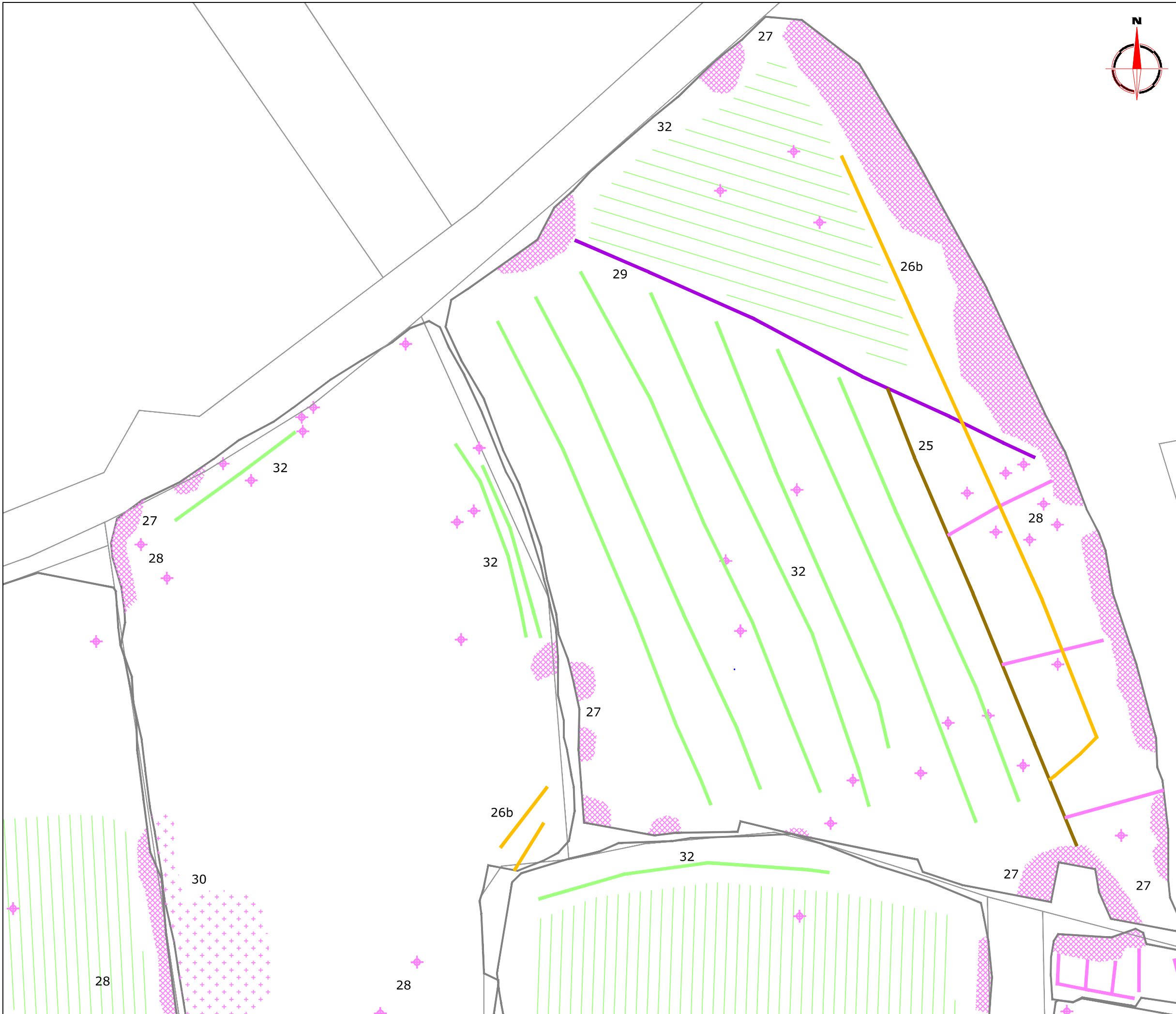


Scale
1:1250

Plot A3	Checked by DGE	Issue No. 01
Survey date MAY 2013	Drawn by TR	Figure No. 21



Amendments		
Issue No.	Date	Description
-	-	-
-	-	-
© Stratascan Ltd - 2013		
KEY		
PROBABLE ARCHAEOLOGY		
	Positive anomaly / weak positive anomaly - probable cut feature of archaeological origin	
	Negative anomaly / weak negative anomaly - probable bank or earthwork of archaeological origin	
	Positive linear anomaly related to former field boundary present on historic mapping (OS 1924)	
	Widely spaced curving parallel linear anomalies - probably related to ridge-and-furrow	
POSSIBLE ARCHAEOLOGY		
	Positive anomaly - former cut feature of possible archaeological or natural (geological/pedological) origin	
	Negative anomaly / weak negative anomaly - possible bank or earthwork of archaeological origin	
	Moderate strength discrete anomaly - possible thermoremanent feature	
OTHER ANOMALIES		
	Magnetic spike - probable ferrous object	
	Closely spaced parallel linear anomalies - probably related to agricultural activity such as ploughing	
	Linear anomaly - probably related to pipe, cable or other modern service	
	Linear anomaly related to a footpath	
	Magnetic disturbance associated with nearby metal object such as service or field boundary	
	Strong magnetic debris - possible disturbed or made ground	
	Scattered magnetic debris	
	Area of amorphous magnetic variation - possible natural origin or may relate to quarrying activity	
Client ARCHAEOLOGICAL SERVICES & CONSULTANCY LTD		
Project Title GEOPHYSICAL SURVEY - DACORUM AREA, HERTFORDSHIRE		Job No. J3349
Subject ABSTRACTION AND INTERPRETATION OF GRADIOMETER ANOMALIES - AREA LA5 - WEST		
STRATASCAN ™		
GEOPHYSICS FOR ARCHAEOLOGY AND ENGINEERING		
VINEYARD HOUSE UPTON UPON SEVERN WR8 0SA		T: 01684 592266 E: info@stratascan.co.uk www.stratascan.co.uk
Scale 1: 1250		
Plot A3	Checked by DGE	Issue No. 01
Survey date MAY 2013	Drawn by TR	Figure No. 22



Amendments		
Issue No.	Date	Description
-	-	-
-	-	-
© Stratascan Ltd - 2013		
KEY		
PROBABLE ARCHAEOLOGY		
	Positive anomaly / weak positive anomaly - probable cut feature of archaeological origin	
	Negative anomaly / weak negative anomaly - probable bank or earthwork of archaeological origin	
	Positive linear anomaly related to former field boundary present on historic mapping	
	Widely spaced curving parallel linear anomalies - probably related to ridge-and-furrow	
POSSIBLE ARCHAEOLOGY		
	Positive anomaly - former cut feature of possible archaeological or natural (geological/pedological) origin	
	Negative anomaly / weak negative anomaly - possible bank or earthwork of archaeological origin	
	Moderate strength discrete anomaly - possible thermoremanent feature	
	Magnetic spike - probable ferrous object	
OTHER ANOMALIES		
	Closely spaced parallel linear anomalies - probably related to agricultural activity such as ploughing	
	Linear anomaly - probably related to pipe, cable or other modern service	
	Linear anomaly related to a footpath	
	Magnetic disturbance associated with nearby metal object such as service or field boundary	
	Strong magnetic debris - possible disturbed or made ground	
	Scattered magnetic debris	
	Area of amorphous magnetic variation - possible natural origin or may relate to quarrying activity	
Client ARCHAEOLOGICAL SERVICES & CONSULTANCY LTD		
Project Title GEOPHYSICAL SURVEY - DACORUM AREA, HERTFORDSHIRE		Job No. J3349
Subject ABSTRACTION AND INTERPRETATION OF GRADIOMETER ANOMALIES - AREA LA5 - NORTH		
STRATASCAN™ GEOPHYSICS FOR ARCHAEOLOGY AND ENGINEERING		
VINEYARD HOUSE UPTON UPON SEVERN WR8 0SA		T: 01684 592266 E: info@stratascan.co.uk www.stratascan.co.uk
Scale 1:1250		
Plot A3	Checked by DGE	Issue No. 01
Survey date MAY 2013	Drawn by TR	Figure No. 23



Amendments		
Issue No.	Date	Description
-	-	-
-	-	-
© Stratascan Ltd - 2013		
KEY		
PROBABLE ARCHAEOLOGY		
	Positive anomaly / weak positive anomaly - probable cut feature of archaeological origin	
	Negative anomaly / weak negative anomaly - probable bank or earthwork of archaeological origin	
	Positive linear anomaly related to former field boundary present on historic mapping	
	Widely spaced curving parallel linear anomalies - probably related to ridge-and-furrow	
POSSIBLE ARCHAEOLOGY		
	Positive anomaly - former cut feature of possible archaeological or natural (geological/pedological) origin	
	Negative anomaly / weak negative anomaly - possible bank or earthwork of archaeological origin	
	Moderate strength discrete anomaly - possible thermoremanent feature	
	Magnetic spike - probable ferrous object	
OTHER ANOMALIES		
	Closely spaced parallel linear anomalies - probably related to agricultural activity such as ploughing	
	Linear anomaly - probably related to pipe, cable or other modern service	
	Linear anomaly related to a footpath	
	Magnetic disturbance associated with nearby metal object such as service or field boundary	
	Strong magnetic debris - possible disturbed or made ground	
	Scattered magnetic debris	
	Area of amorphous magnetic variation - possible natural origin or may relate to quarrying activity	
Client ARCHAEOLOGICAL SERVICES & CONSULTANCY LTD		
Project Title GEOPHYSICAL SURVEY - DACORUM AREA, HERTFORDSHIRE		Job No. J3349
Subject ABSTRACTION AND INTERPRETATION OF GRADIOMETER ANOMALIES - AREA LA5 - SOUTH		
STRATASCAN ™		
GEOPHYSICS FOR ARCHAEOLOGY AND ENGINEERING		
VINEYARD HOUSE UPTON UPON SEVERN WR8 0SA		T: 01684 592266 E: info@stratascan.co.uk www.stratascan.co.uk
SUMO GROUP MEMBER		
Scale 1:1250		
Plot A3	Checked by DGE	Issue No. 01
Survey date MAY 2013	Drawn by TR	Figure No. 24



Amendments

Issue No.	Date	Description
-	-	-
-	-	-

© Stratascan Ltd - 2013

Plotting parameters

Maximum +2nT (black)
Minimum -2nT (white)

+2nT

-2nT

Client
ARCHAEOLOGICAL SERVICES & CONSULTANCY LTD

Project Title Job No. J3349
GEOPHYSICAL SURVEY - DACORUM AREA, HERTFORDSHIRE

Subject
PLOT OF MINIMALLY PROCESSED GRADIOMETER DATA - AREA LA5 OVERVIEW

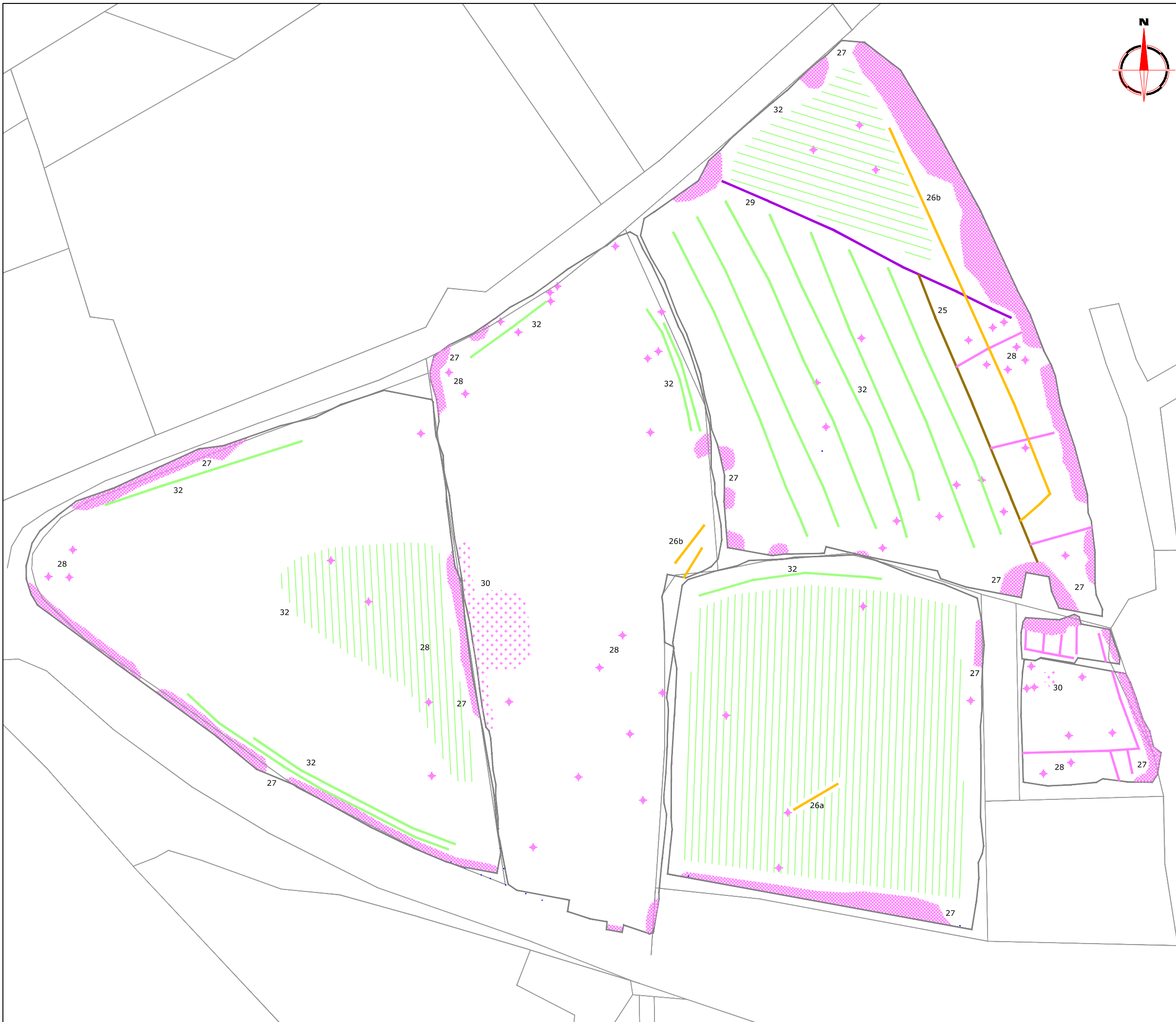
STRATASCAN™
GEOPHYSICS FOR ARCHAEOLOGY AND ENGINEERING

VINEYARD HOUSE T: 01684 592266
UPTON UPON SEVERN E: info@stratascan.co.uk
WR8 0SA www.stratascan.co.uk



Scale 0m 20 40 60 80 100m
1:2000

Plot A3	Checked by DGE	Issue No. 01
Survey date MAY 2013	Drawn by TR	Figure No. 25



Amendments		
Issue No.	Date	Description
-	-	-
-	-	-
© Stratascan Ltd - 2013		
KEY		
PROBABLE ARCHAEOLOGY		
	Positive anomaly / weak positive anomaly - probable cut feature of archaeological origin	
	Negative anomaly / weak negative anomaly - probable bank or earthwork of archaeological origin	
	Positive linear anomaly related to former field boundary present on historic mapping	
	Widely spaced curving parallel linear anomalies - probably related to ridge-and-furrow	
POSSIBLE ARCHAEOLOGY		
	Positive anomaly - former cut feature of possible archaeological or natural (geological/pedological) origin	
	Negative anomaly / weak negative anomaly - possible bank or earthwork of archaeological origin	
	Moderate strength discrete anomaly - possible thermoremanent feature	
	Magnetic spike - probable ferrous object	
OTHER ANOMALIES		
	Closely spaced parallel linear anomalies - probably related to agricultural activity such as ploughing	
	Linear anomaly - probably related to pipe, cable or other modern service	
	Linear anomaly related to a footpath	
	Magnetic disturbance associated with nearby metal object such as service or field boundary	
	Strong magnetic debris - possible disturbed or made ground	
	Scattered magnetic debris	
	Area of amorphous magnetic variation - possible natural origin or may relate to quarrying activity	
Client ARCHAEOLOGICAL SERVICES & CONSULTANCY LTD		
Project Title GEOPHYSICAL SURVEY - DACORUM AREA, HERTFORDSHIRE		Job No. J3349
Subject ABSTRACTION AND INTERPRETATION OF GRADIOMETER ANOMALIES - AREA LA5 - OVERVIEW		
STRATASCAN ™		
GEOPHYSICS FOR ARCHAEOLOGY AND ENGINEERING		
VINEYARD HOUSE UPTON UPON SEVERN WR8 0SA		T: 01684 592266 E: info@stratascan.co.uk www.stratascan.co.uk
Scale 1:2000		
Plot A3	Checked by DGE	Issue No. 01
Survey date MAY 2013	Drawn by TR	Figure No. 26