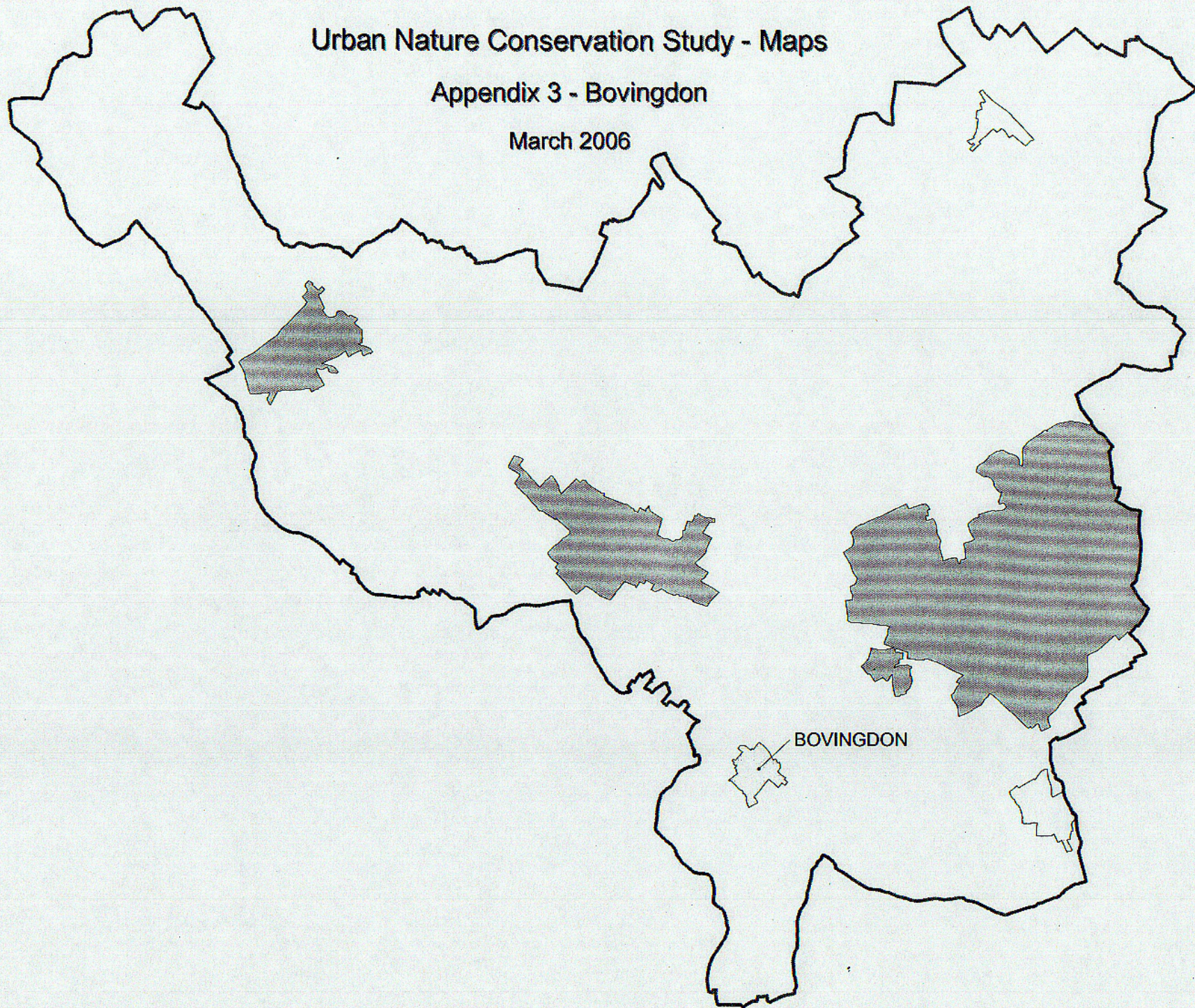


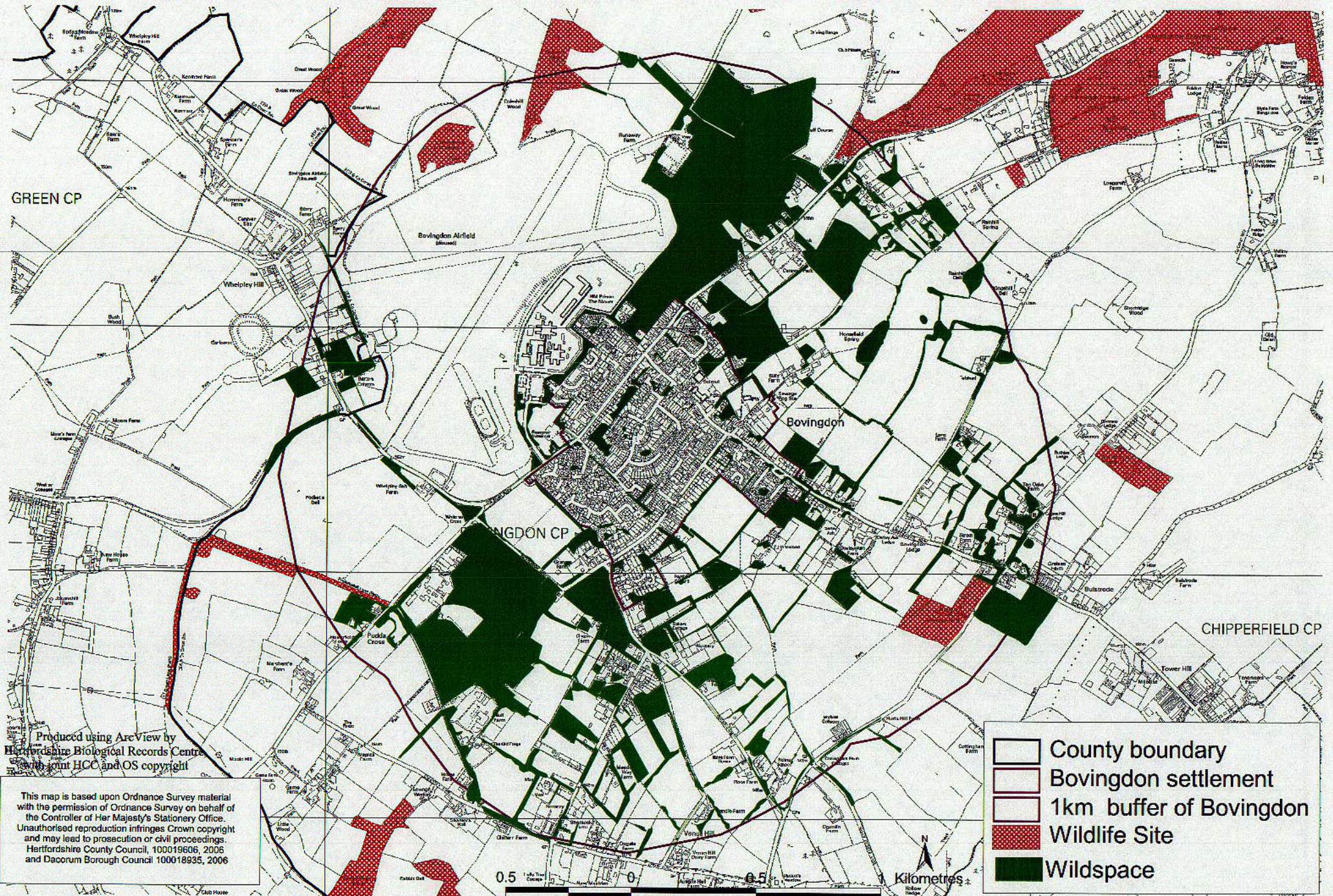
Urban Nature Conservation Study - Maps

Appendix 3 - Bovington

March 2006



# Appendix 3.1 Identified biodiversity resources, Bovingdon and surrounds



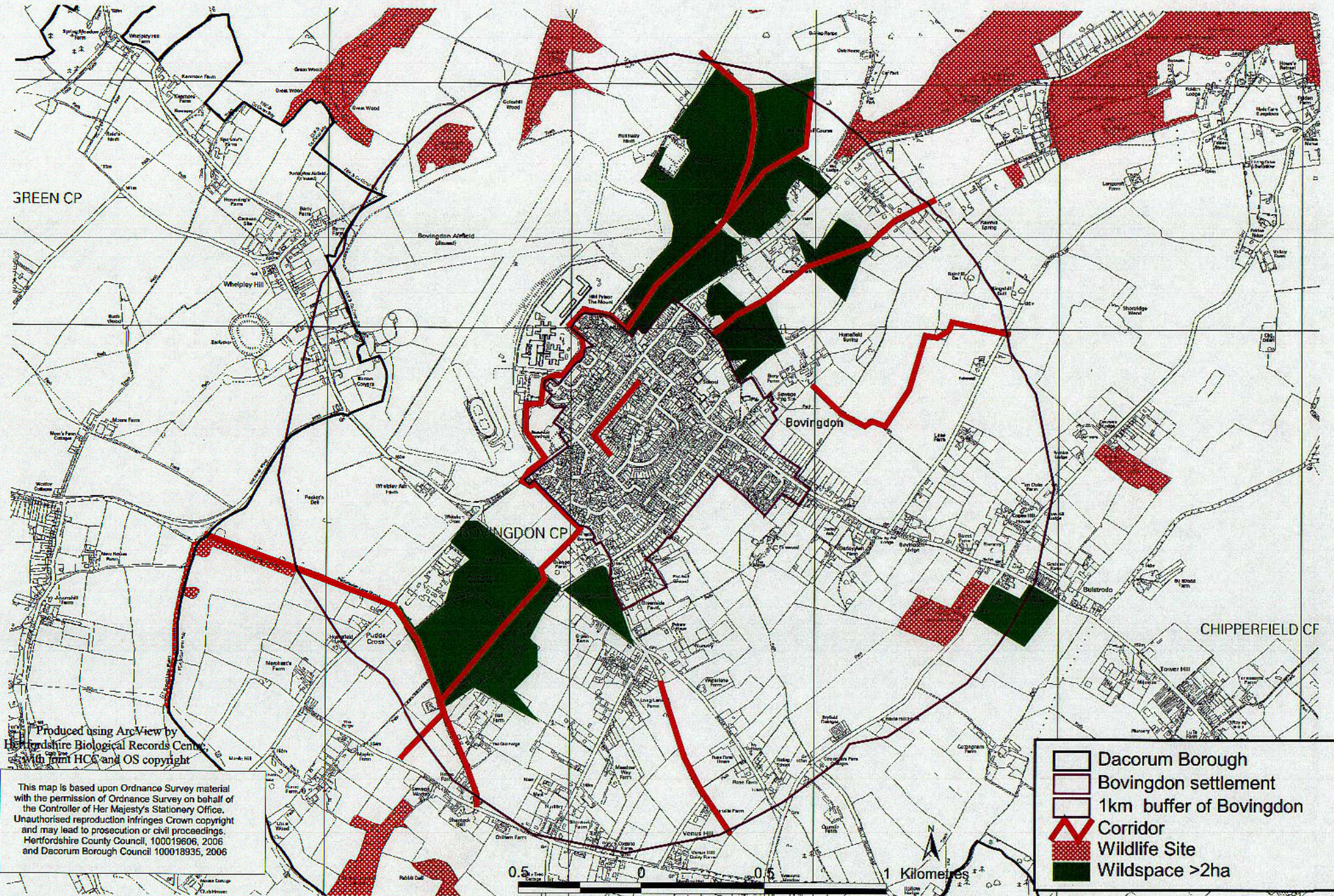
Produced using ArcView by  
Hertfordshire Biological Records Centre  
with joint HCC and OS copyright

This map is based upon Ordnance Survey material with the permission of Ordnance Survey on behalf of the Controller of Her Majesty's Stationery Office. Unauthorized reproduction infringes Crown copyright and may lead to prosecution or civil proceedings. Hertfordshire County Council, 100019606, 2006 and Dacorum Borough Council 100018935, 2006

	County boundary
	Bovingdon settlement
	1km buffer of Bovingdon
	Wildlife Site
	Wildspace



# Appendix 3.2 Principal existing biodiversity corridors

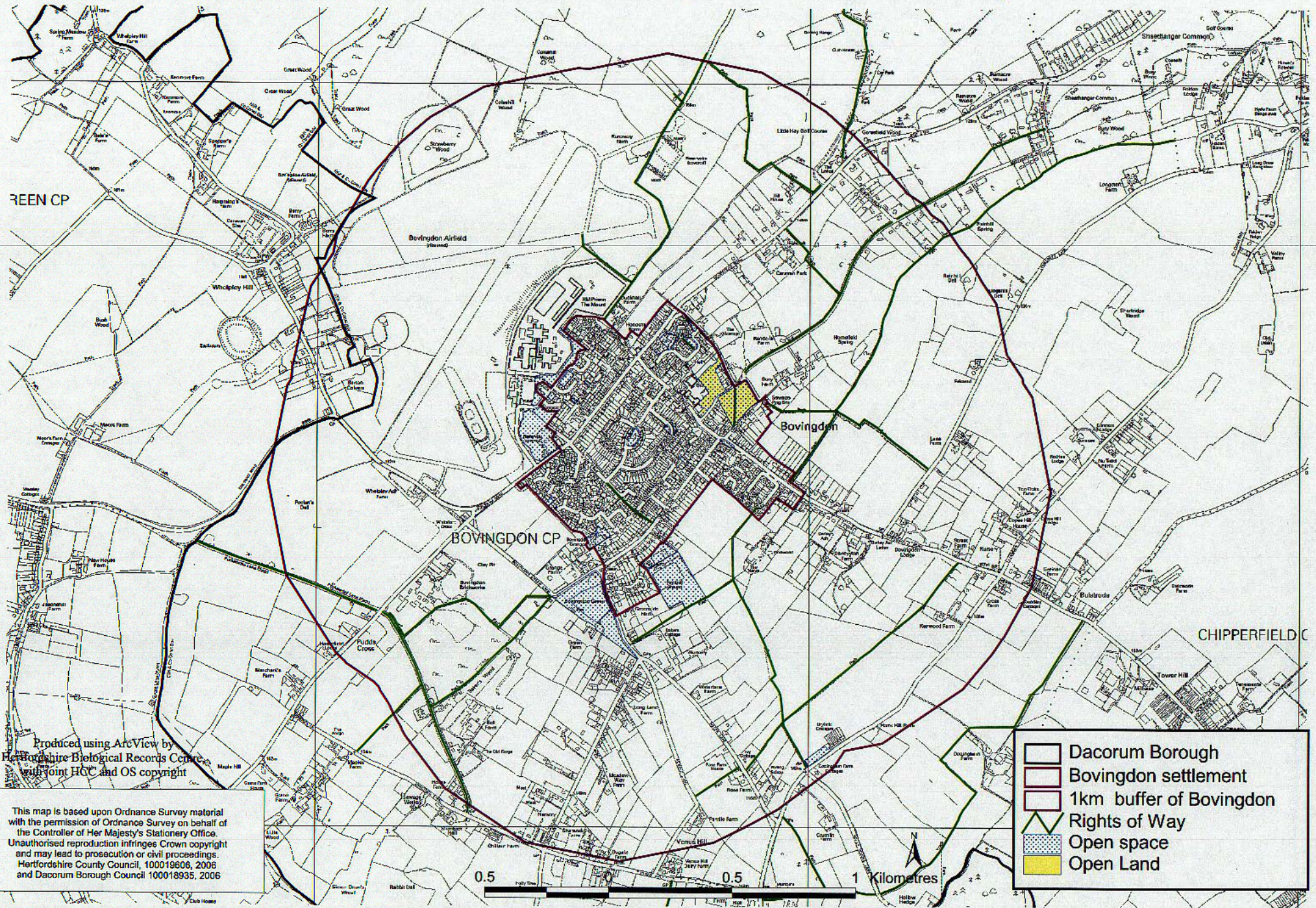


Produced using ArcView by  
 Hertfordshire Biological Records Centre  
 with permission from HCC and OS copyright

This map is based upon Ordnance Survey material with the permission of Ordnance Survey on behalf of the Controller of Her Majesty's Stationary Office. Unauthorised reproduction infringes Crown copyright and may lead to prosecution or civil proceedings. Hertfordshire County Council, 100019606, 2006 and Dacorum Borough Council 100018935, 2006

	Dacorum Borough
	Bovington settlement
	1km buffer of Bovington
	Corridor
	Wildlife Site
	Wildspace >2ha

# Appendix 3.3 Open Land, open space and Rights of Way

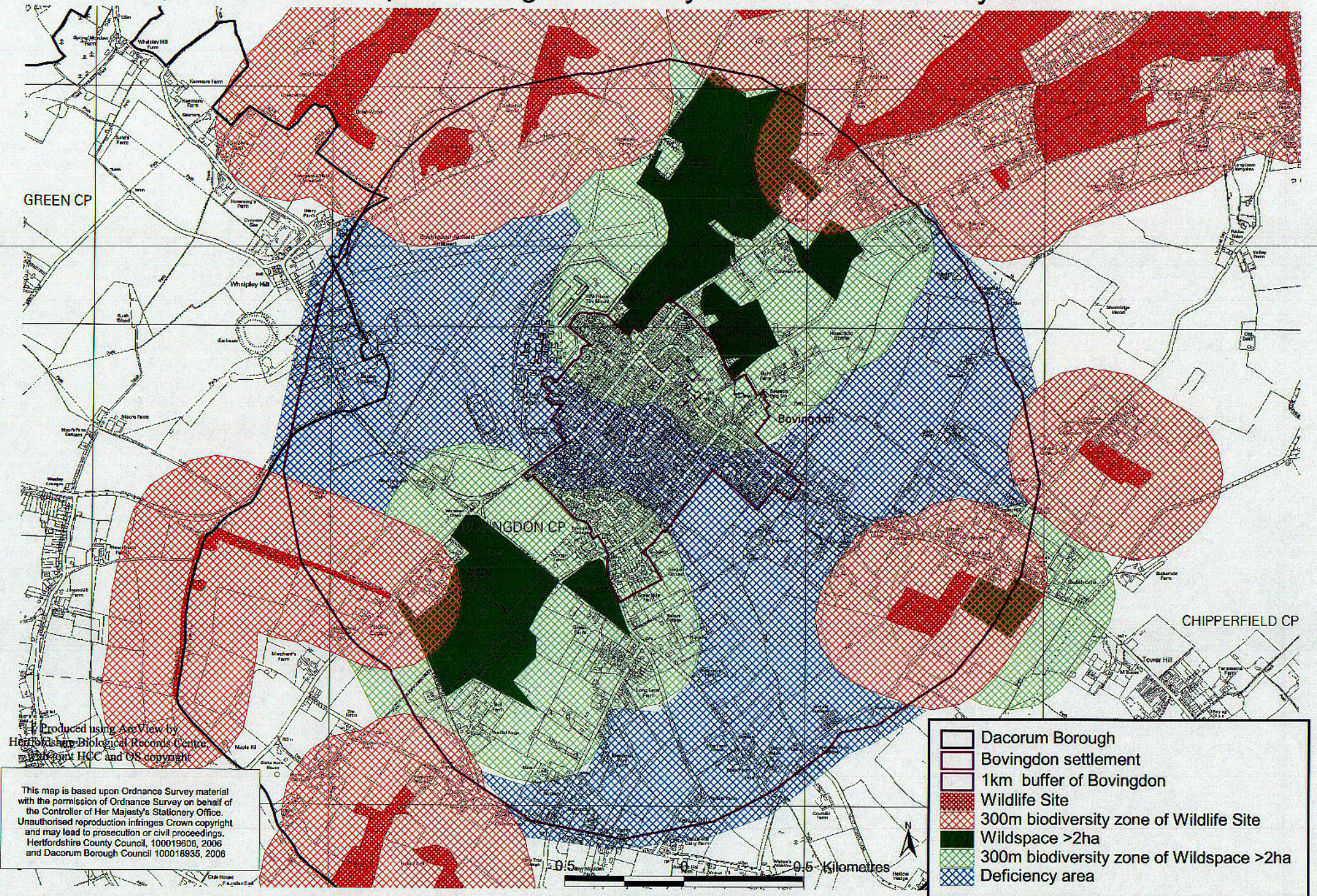


Produced using ArcView by  
 Herfordshire Biological Records Centre  
 with joint HCC and OS copyright

This map is based upon Ordnance Survey material with the permission of Ordnance Survey on behalf of the Controller of Her Majesty's Stationary Office. Unauthorised reproduction infringes Crown copyright and may lead to prosecution or civil proceedings. Hertfordshire County Council, 100019606, 2006 and Dacorum Borough Council 100018935, 2006

0.5 0.5 1 Kilometres

# Appendix 3.4 Principal existing biodiversity zones and deficiency areas

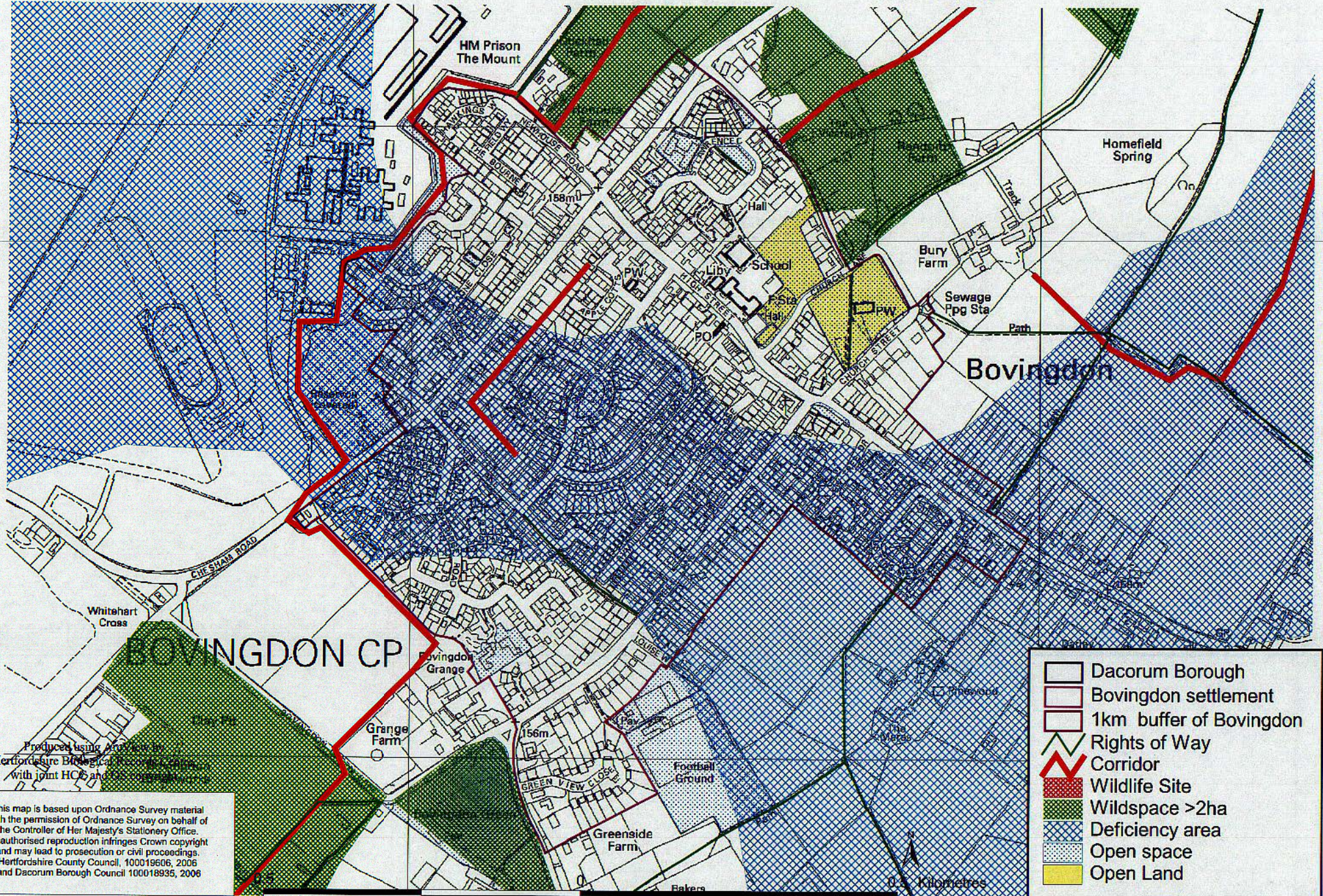


Produced using ArcView by  
Hertfordshire Biological Records Centre  
© Hertfordshire HCC and OS copyright

This map is based upon Ordnance Survey material with the permission of Ordnance Survey on behalf of the Controller of Her Majesty's Stationery Office. Unauthorised reproduction infringes Crown copyright and may lead to prosecution or civil proceedings. Hertfordshire County Council, 100019606, 2006 and Dacorum Borough Council 100018935, 2006

- Dacorum Borough
- Bovington settlement
- 1km buffer of Bovington
- Wildlife Site
- 300m biodiversity zone of Wildlife Site
- Wildspace >2ha
- 300m biodiversity zone of Wildspace >2ha
- Deficiency area

# Appendix 3.5 Principal biodiversity processes and planning



- Dacorum Borough
- Bovington settlement
- 1km buffer of Bovington
- Rights of Way
- Corridor
- Wildlife Site
- Wildspace >2ha
- Deficiency area
- Open space
- Open Land

Produced using ArcView by  
 Hertfordshire Biological Resources Centre  
 with joint HCC and Dacorum Council funding

This map is based upon Ordnance Survey material with the permission of Ordnance Survey on behalf of the Controller of Her Majesty's Stationery Office. Unauthorised reproduction infringes Crown copyright and may lead to prosecution or civil proceedings. Hertfordshire County Council, 100019606, 2006 and Dacorum Borough Council 100018935, 2006