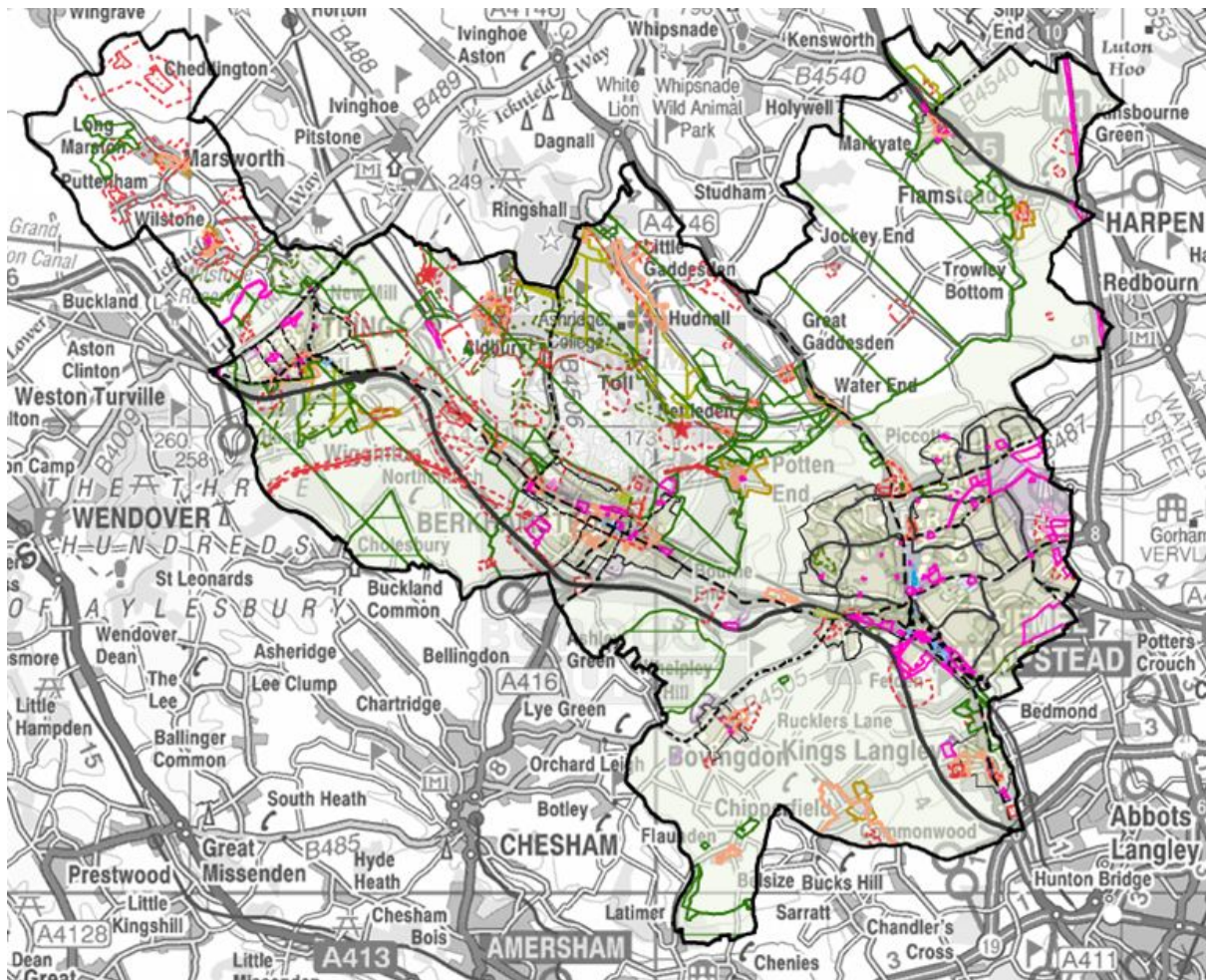


Proposals Map Update

Adopted 25 September 2013

Summary of Changes



Dacorum Borough Local Plan (1991-2011)
incorporating changes in the
Core Strategy

Dacorum's Local Planning Framework

This summary document shows updates made to the Local Plan Proposals Map, arising from the adoption of the Core Strategy (September 2013).

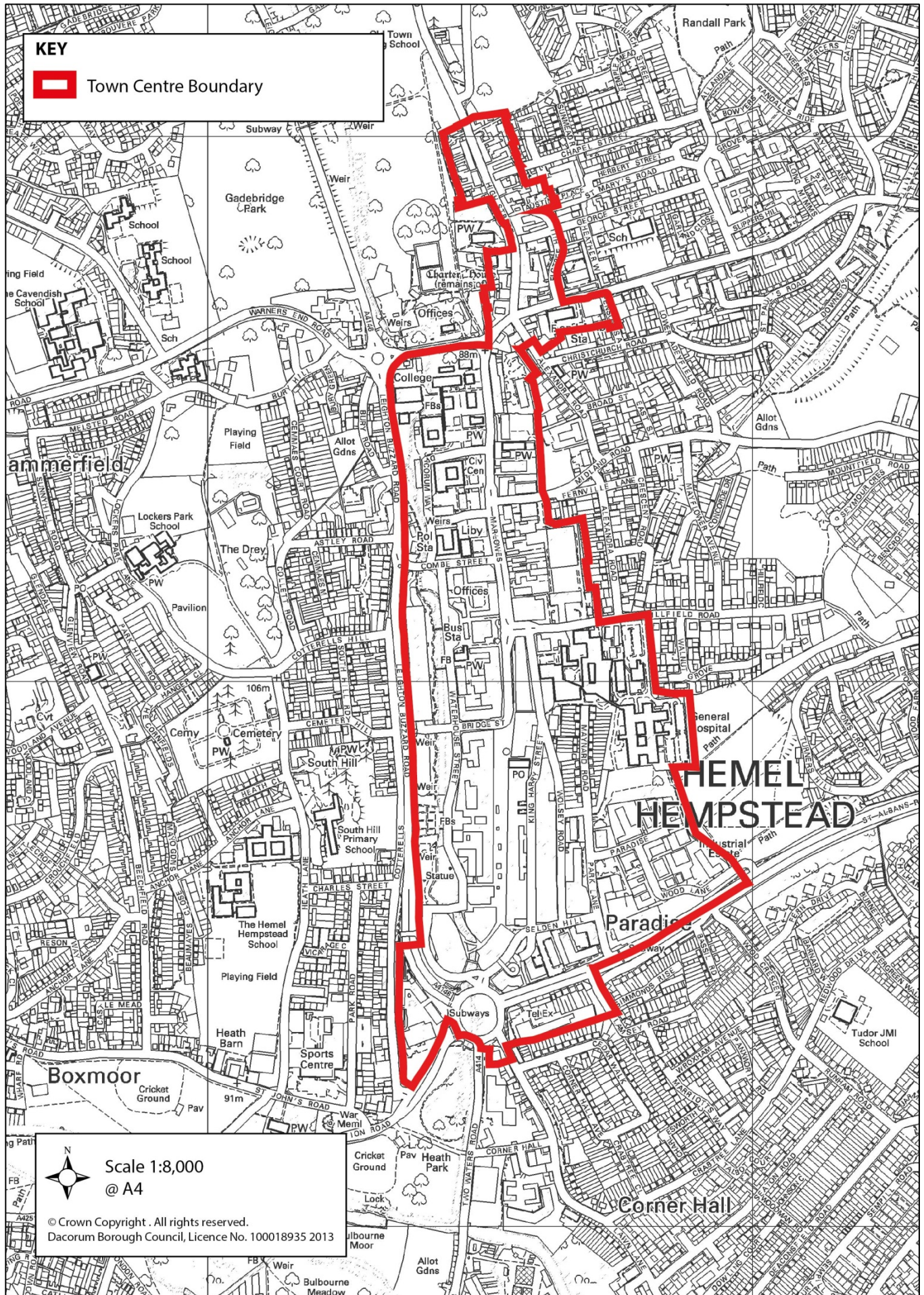
The changes are as follows:

	Page
• Map 1: Hemel Hempstead Town Centre (amended boundary)	1
• Map 2: East Hemel Hempstead Area Action Plan Boundary within Dacorum	2
• Map 3: Strategic Site SS1 – Land at Durrants Lane/Shootersway, Berkhamsted	3
• Map 4: Strategic Site SS2 – Land at Hicks Road, Markyate	4
• Map 5: Deletion of trunk road designation - A41	5
• Map 6: Bovingdon Conservation Area (amended boundary)	6
• Map 7: Chipperfield Conservation Area (amended boundary)	7
• Map 8: Frithsden Conservation Area (amended boundary)	8
• Map 9: Great Gaddesden Conservation Area (amended boundary)	9
• Map 10: Nettleden Conservation Area (amended boundary)	10

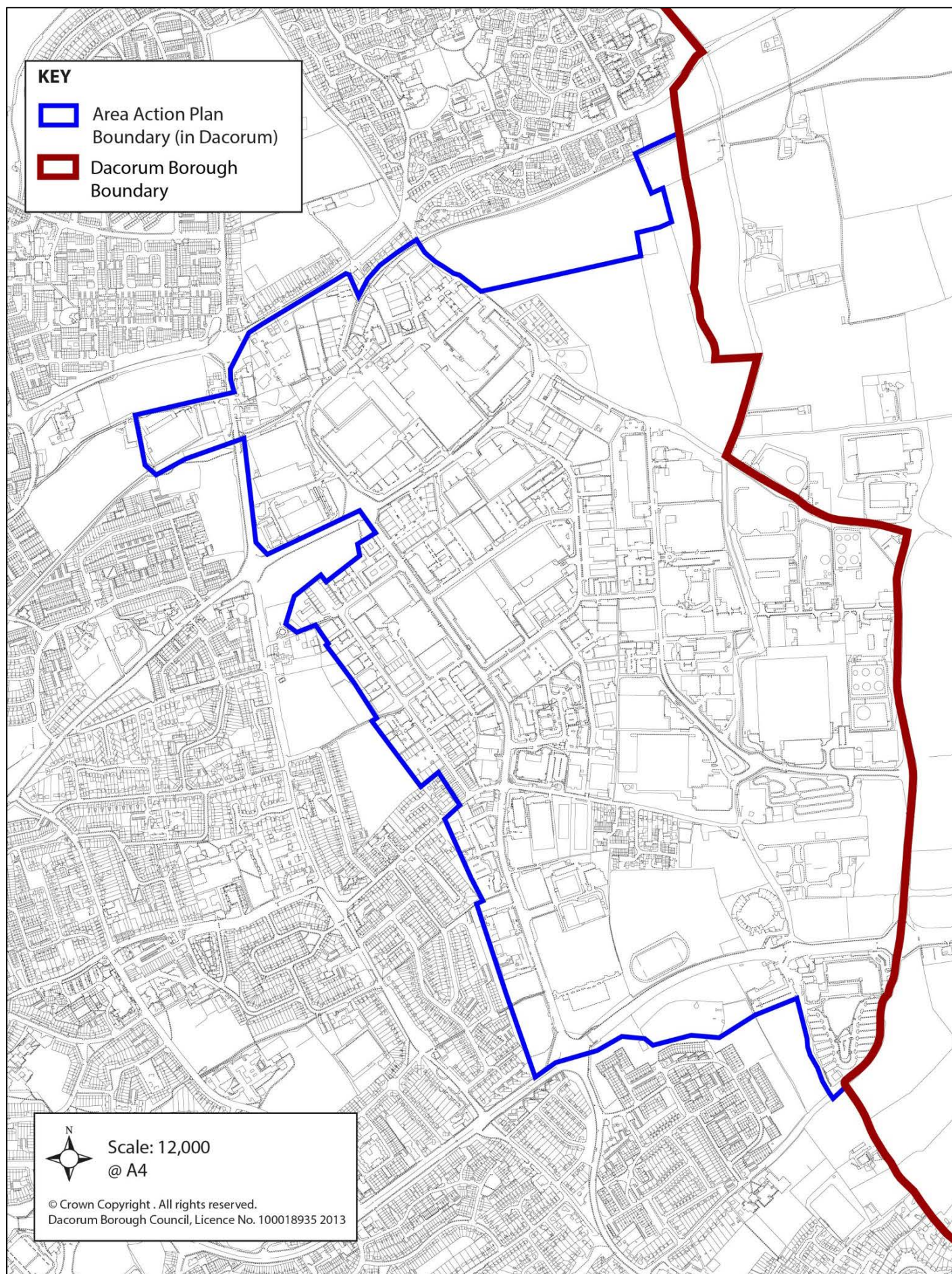
Note:

The broad location of Local Allocations is shown on the Vision Diagrams in the Core Strategy (Sections 20, 21, 22, and 24). The precise boundaries will be determined through the Site Allocations DPD and the Proposals Map amended at this stage.

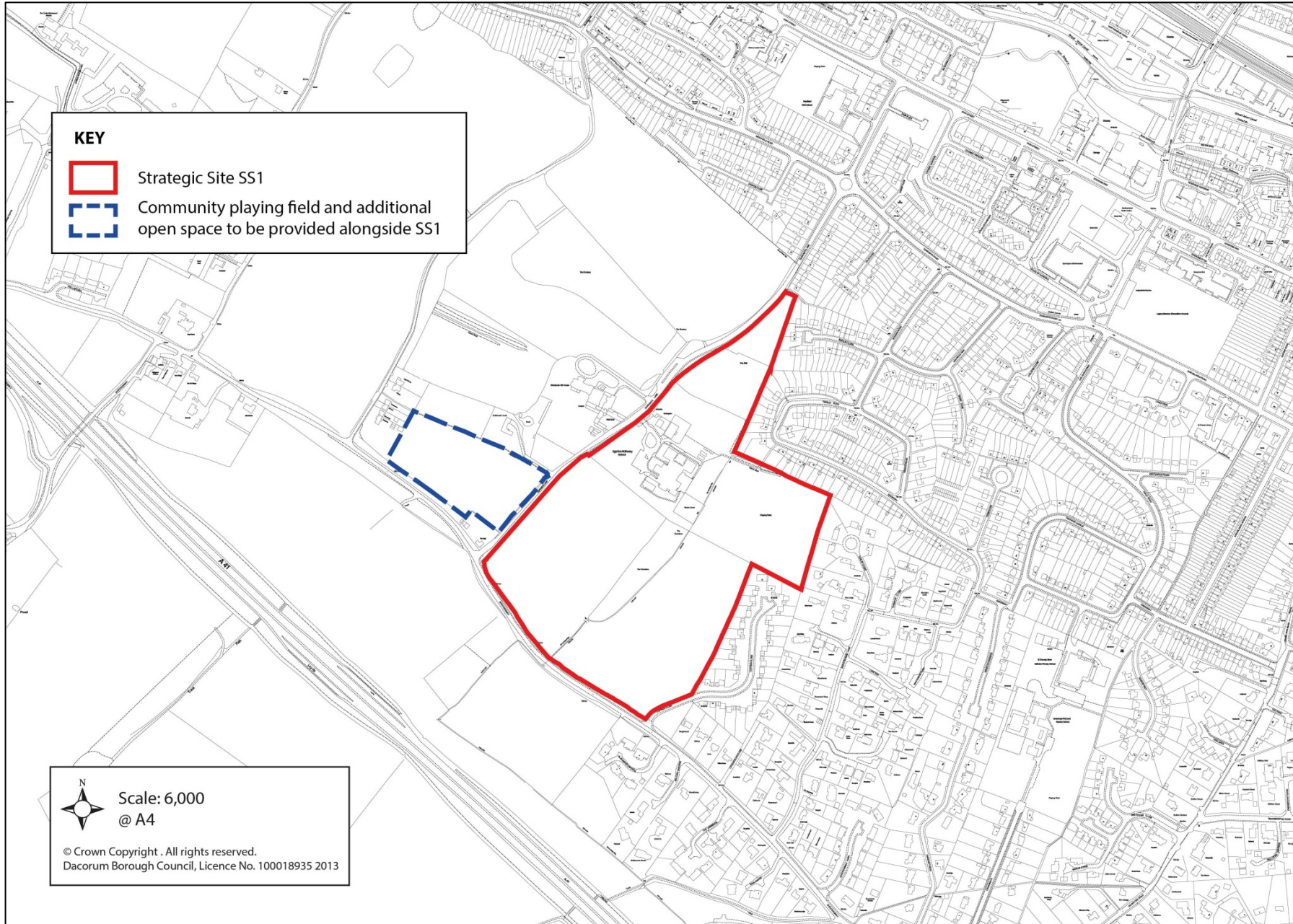
Map 1: Hemel Hempstead Town Centre amended Boundary



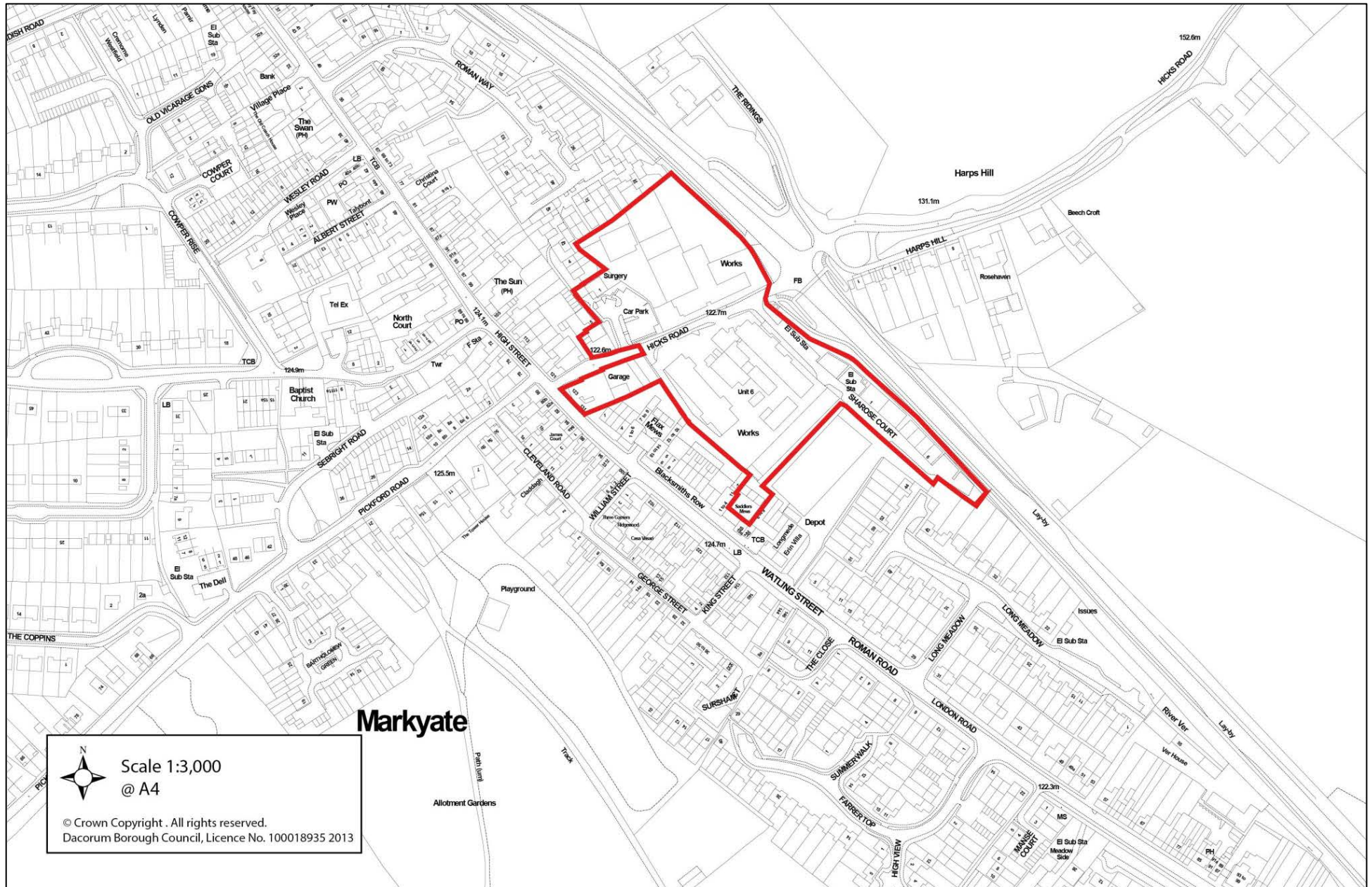
Map 2: East Hemel Hempstead Area Action Plan Boundary within Dacorum



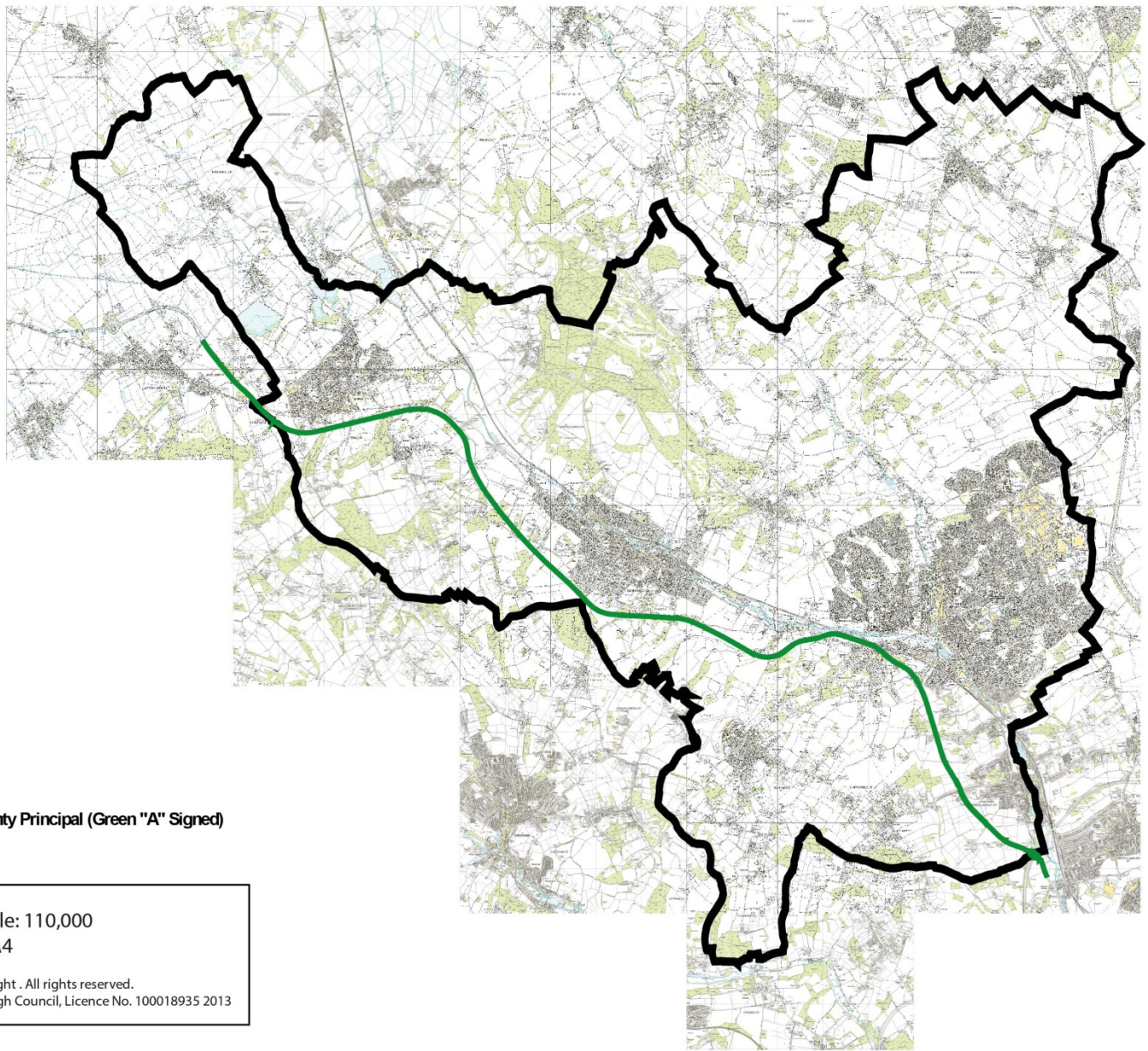
Map 3: Strategic Site SS1 – Land at Durrants Lane/Shootersway, Berkhamsted



Map 4: Strategic Site SS2 – Land at Hicks Road, Markyate



Map 5: Deletion of trunk road designation - A41

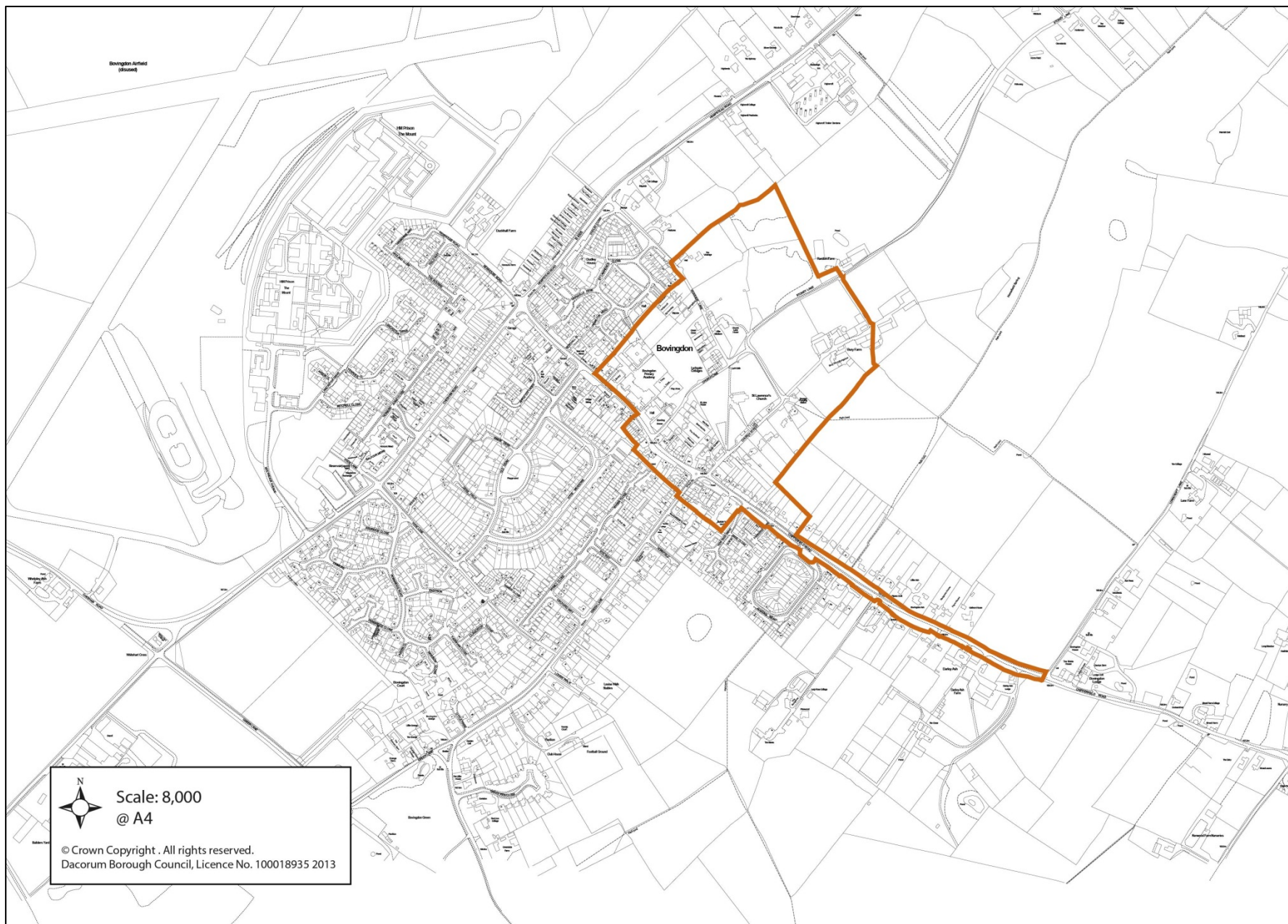


KEY
— County Principal (Green "A" Signed)

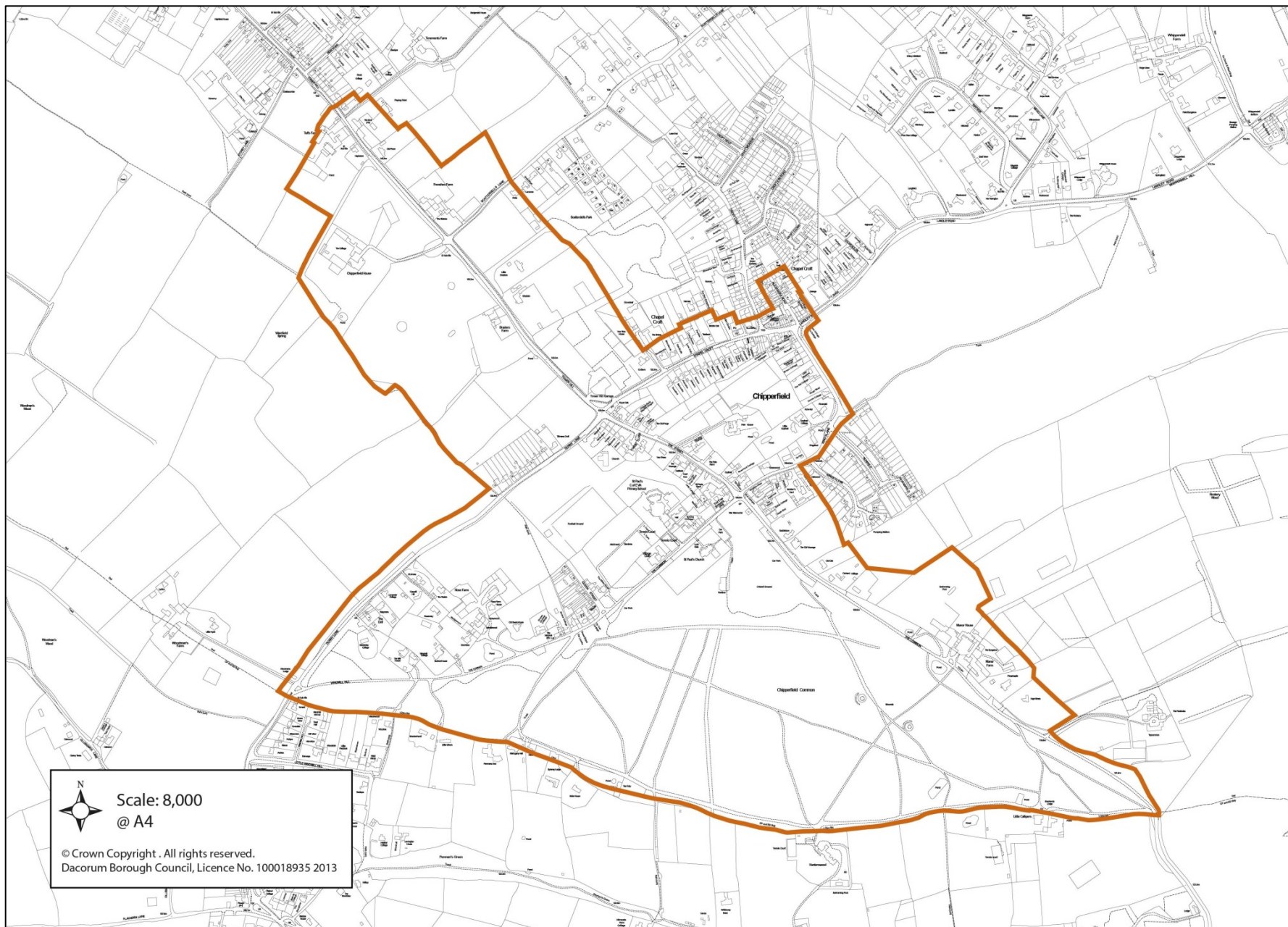
 Scale: 110,000
@ A4

© Crown Copyright . All rights reserved.
Dacorum Borough Council, Licence No. 100018935 2013

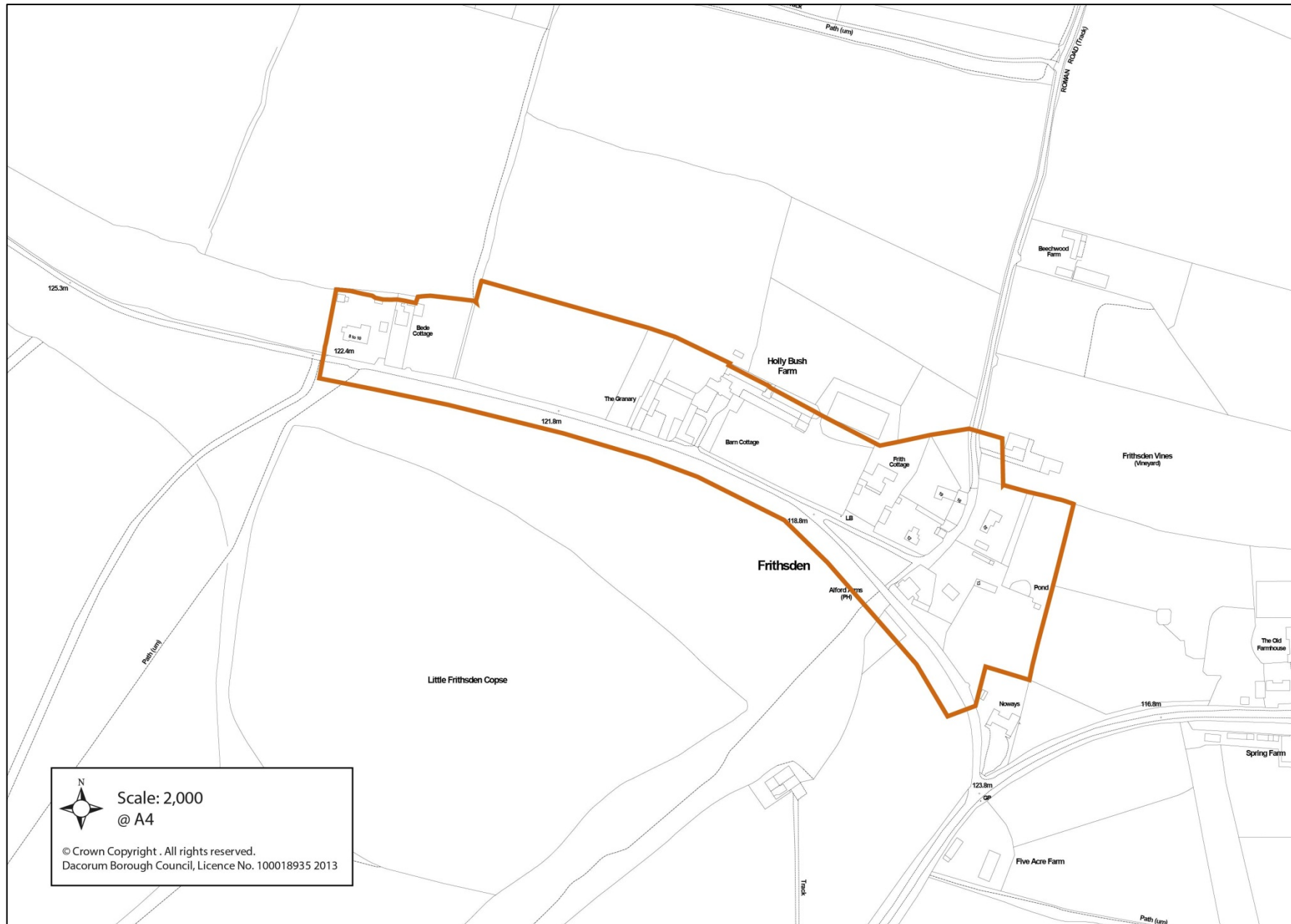
Map 6: Bovington Conservation Area (amended boundary)



Map 7: Chipperfield Conservation Area (amended boundary)



Map 8: Frithsden Conservation Area (amended boundary)



Map 10: Nettleden Conservation Area (amended boundary)

