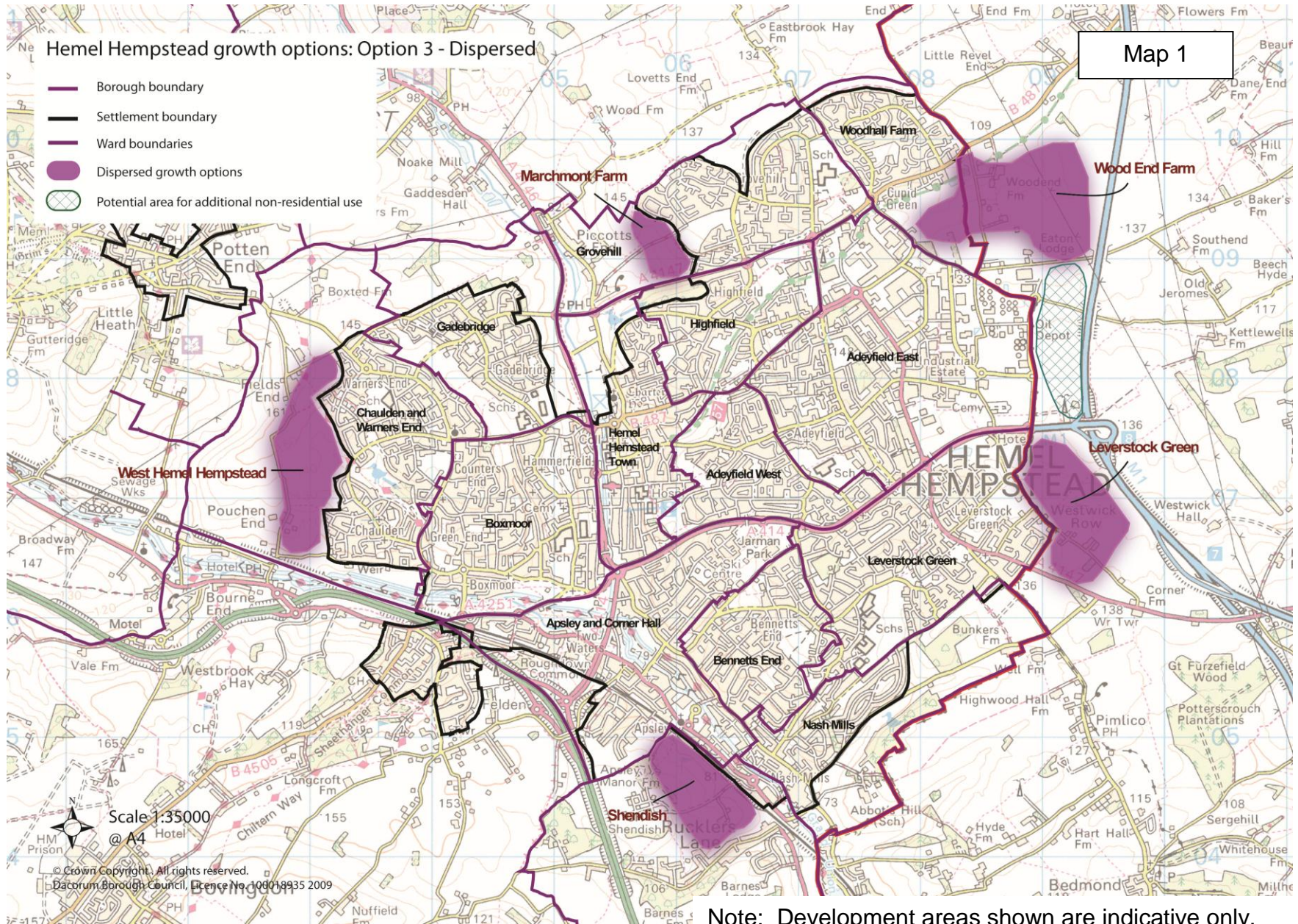


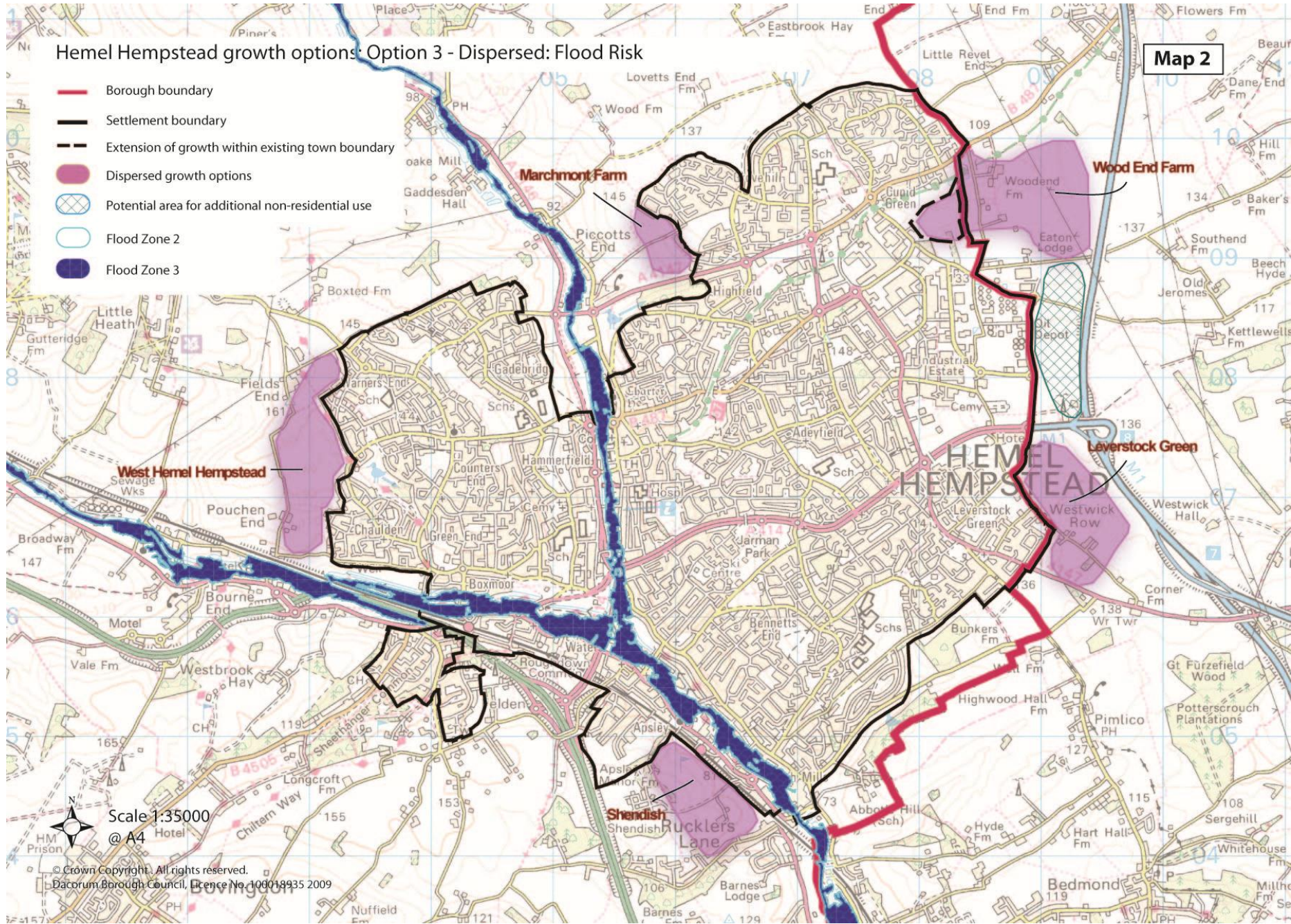
Maps for Option 3



Hemel Hempstead growth options: Option 3 - Dispersed: Flood Risk

Map 2

- Borough boundary
- Settlement boundary
- Extension of growth within existing town boundary
- Dispersed growth options
- Potential area for additional non-residential use
- Flood Zone 2
- Flood Zone 3

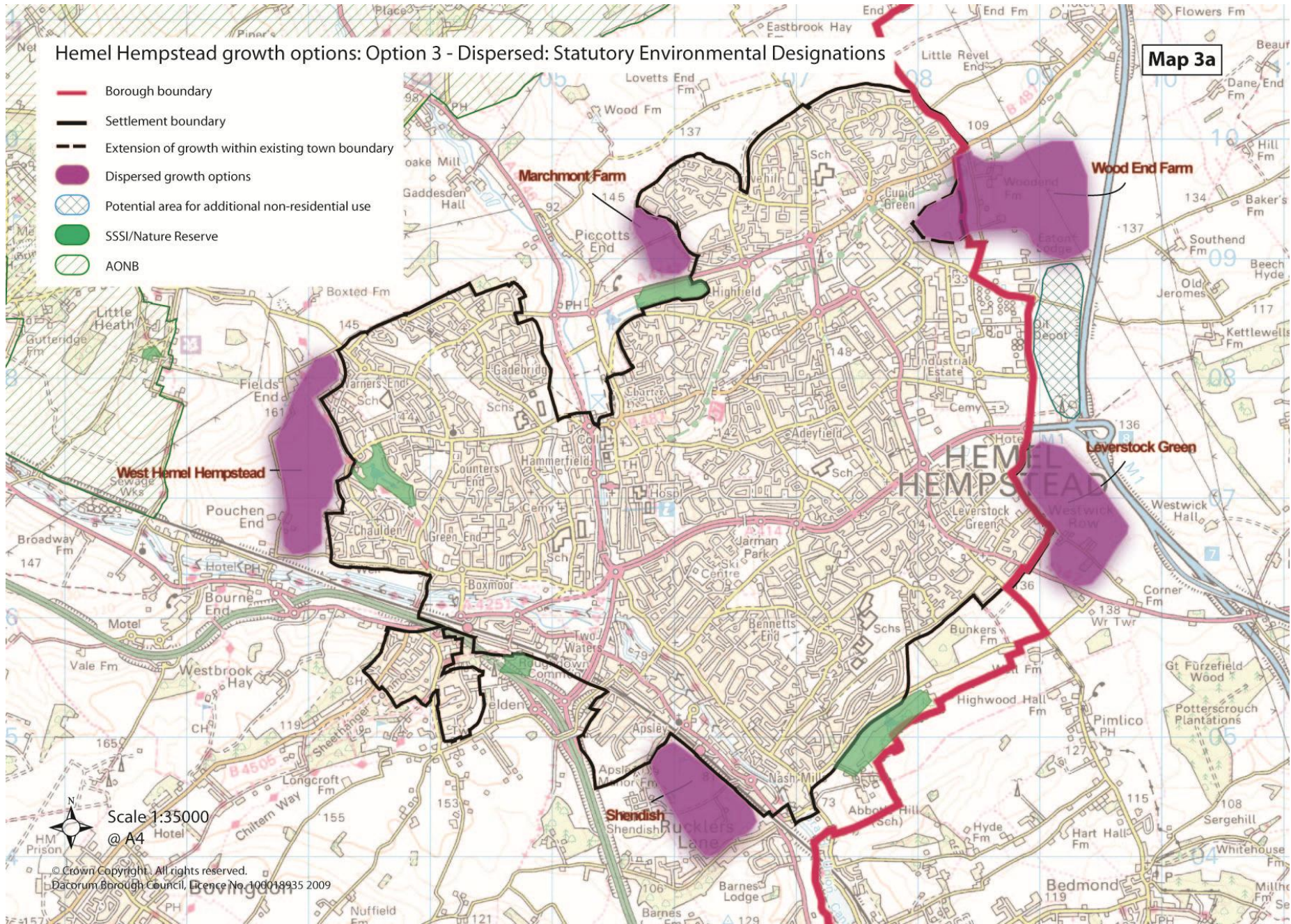


© Crown Copyright. All rights reserved.
 Dacorum Borough Council, Licence No. 100019935 2009

Hemel Hempstead growth options: Option 3 - Dispersed: Statutory Environmental Designations

Map 3a

- Borough boundary
- Settlement boundary
- Extension of growth within existing town boundary
- Dispersed growth options
- Potential area for additional non-residential use
- SSSI/Nature Reserve
- AONB



Scale 1:35000
@ A4

© Crown Copyright. All rights reserved.
Dacorum Borough Council, Licence No. 100018935 2009

Hemel Hempstead growth options: Option 3 - Dispersed: Special Areas of Conservation

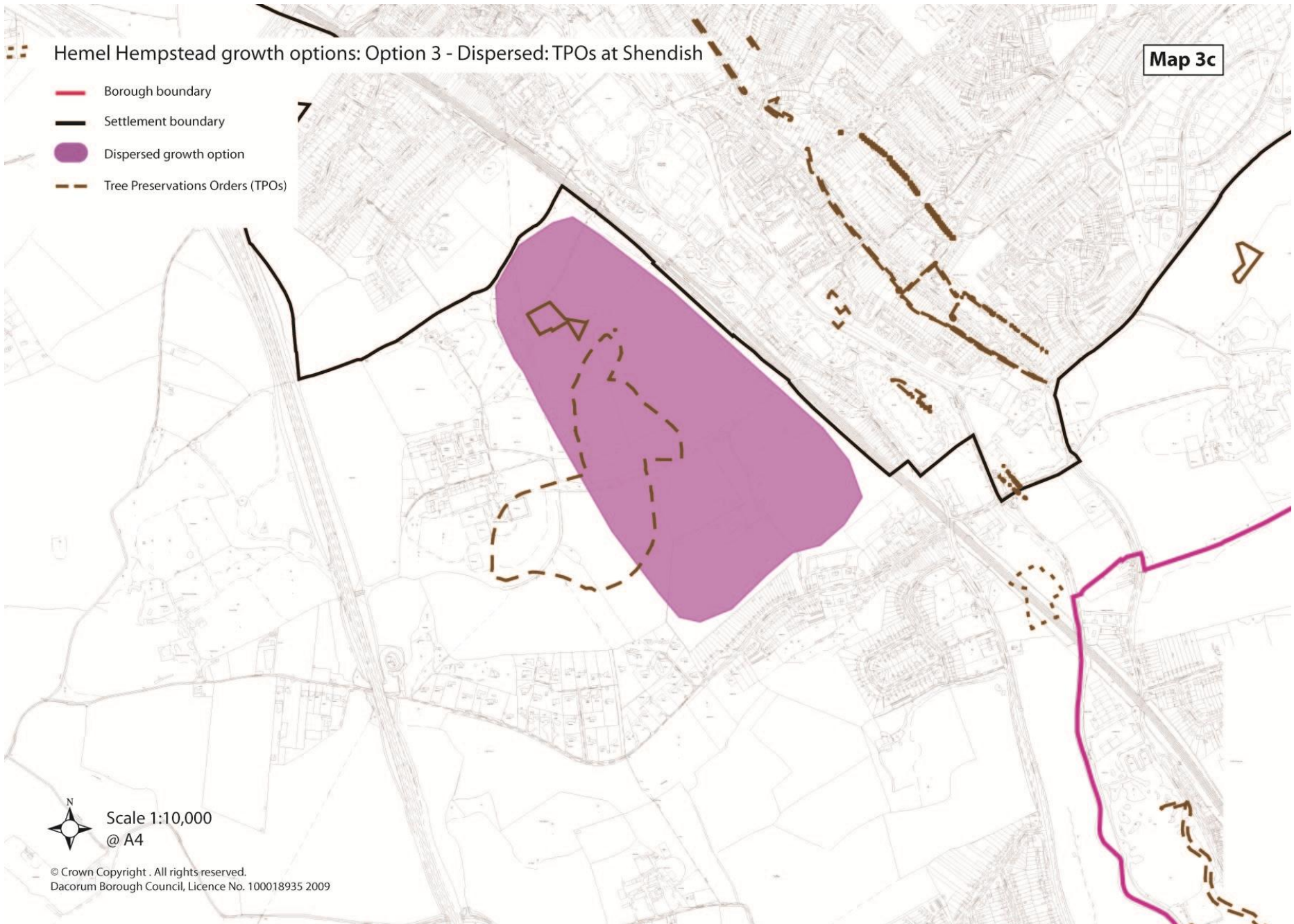
Map 3b

- Borough boundary
- Settlement boundary
- Dispersed growth options
- Special Areas of Conservation
- 3,000m buffer of Special Areas of Conservation



Scale 1:100,000
@ A4

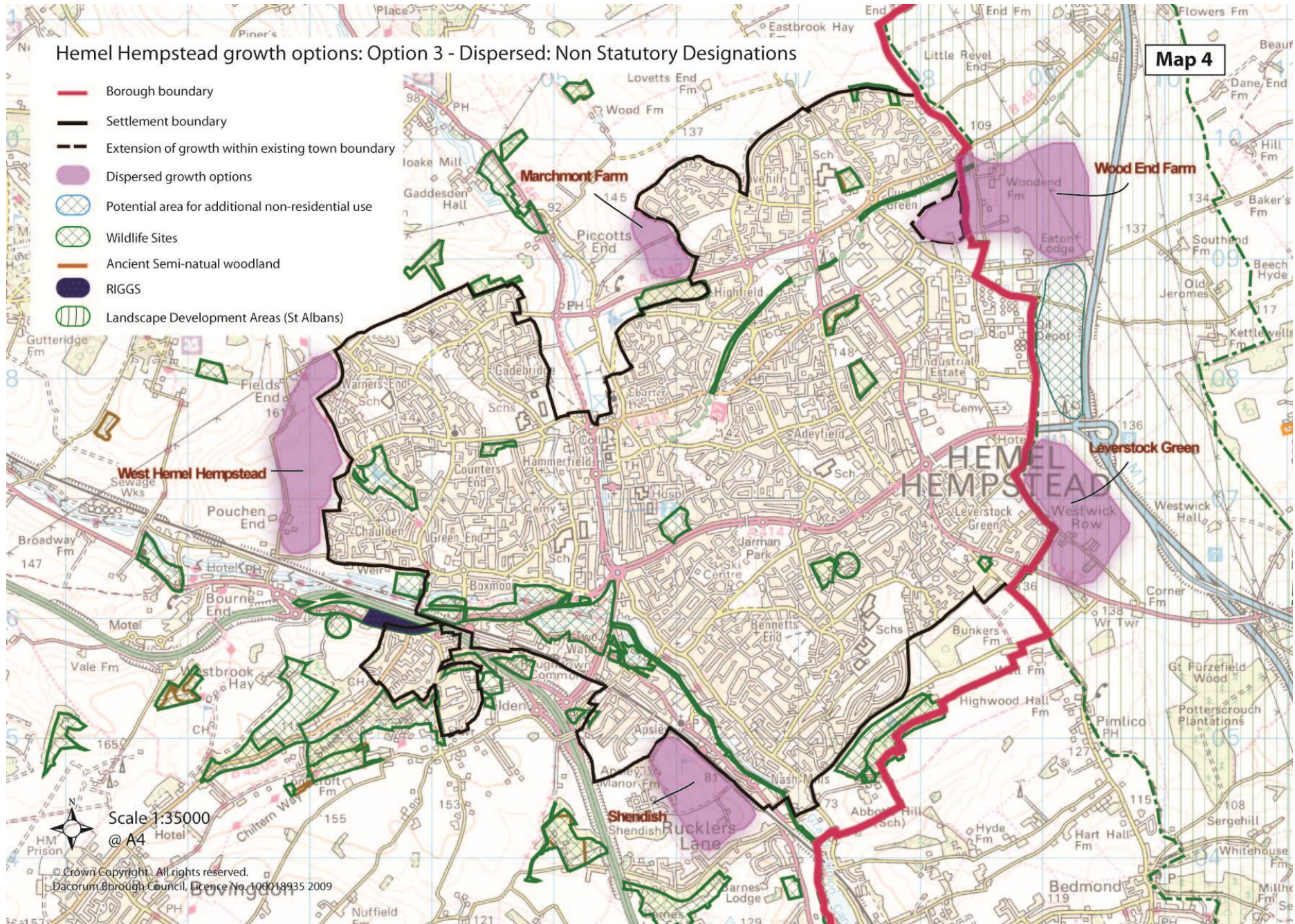
© Crown Copyright . All rights reserved.
Dacorum Borough Council, Licence No. 100018935 2009



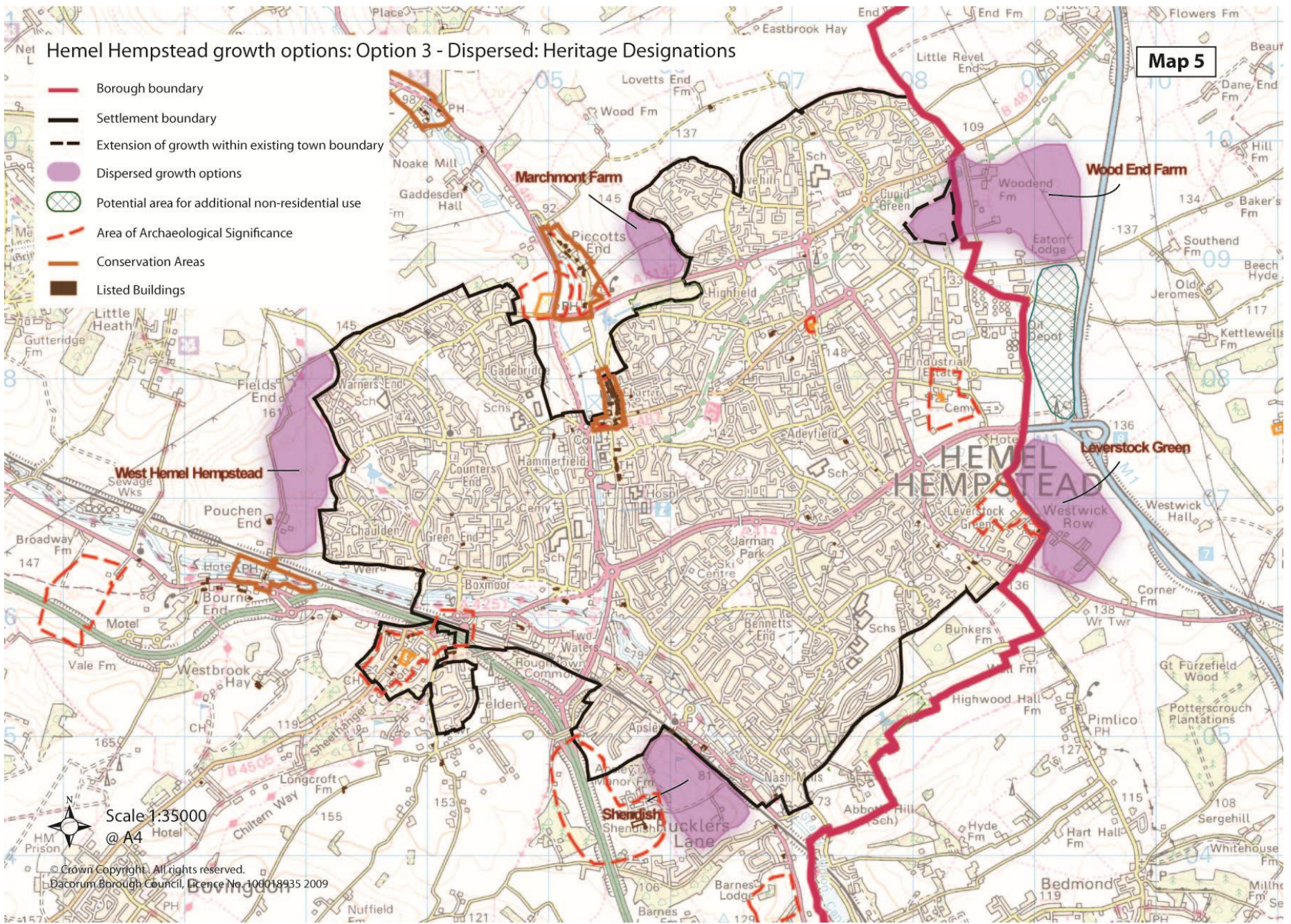
Hemel Hempstead growth options: Option 3 - Dispersed: Non Statutory Designations

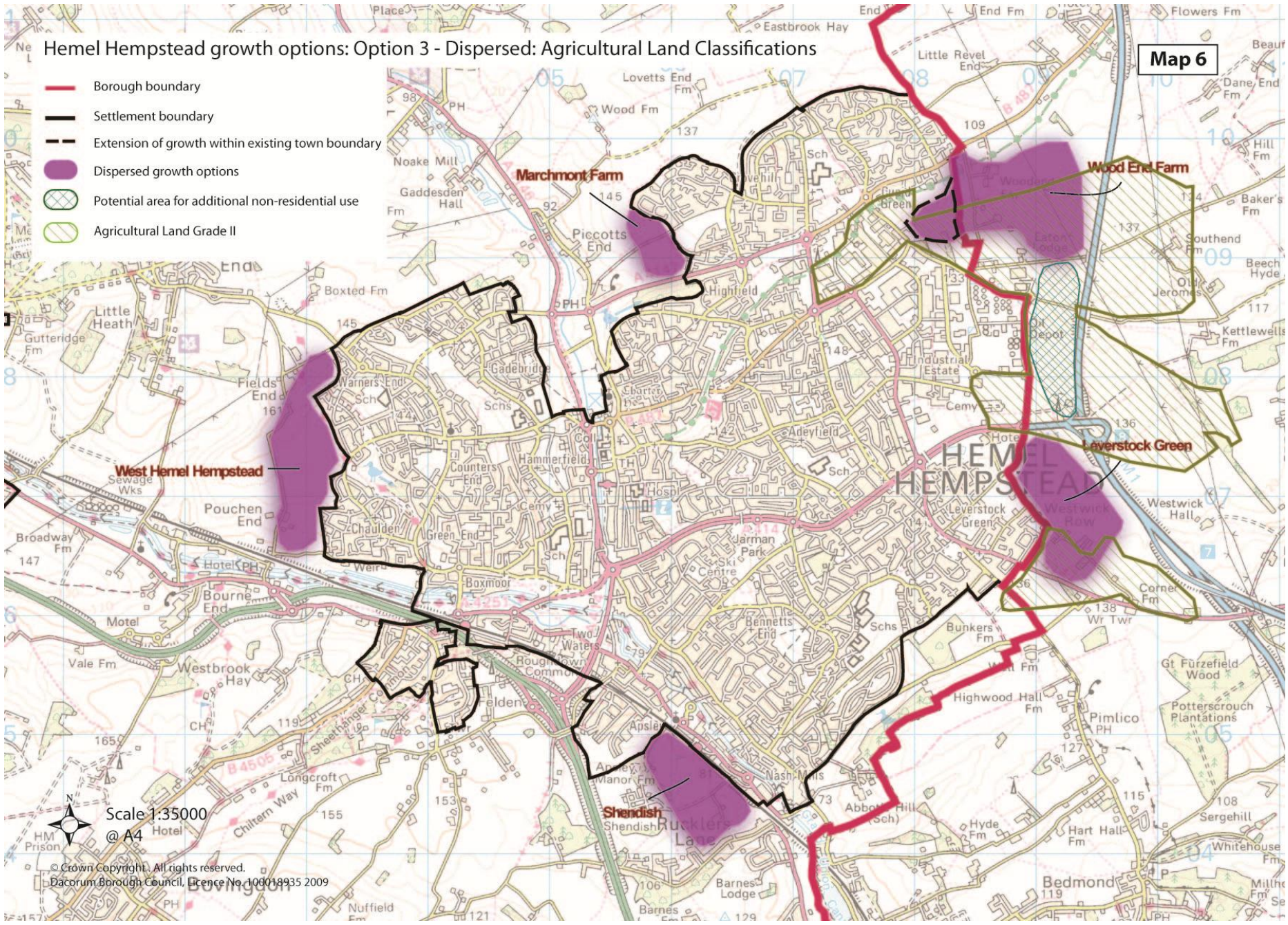
Map 4

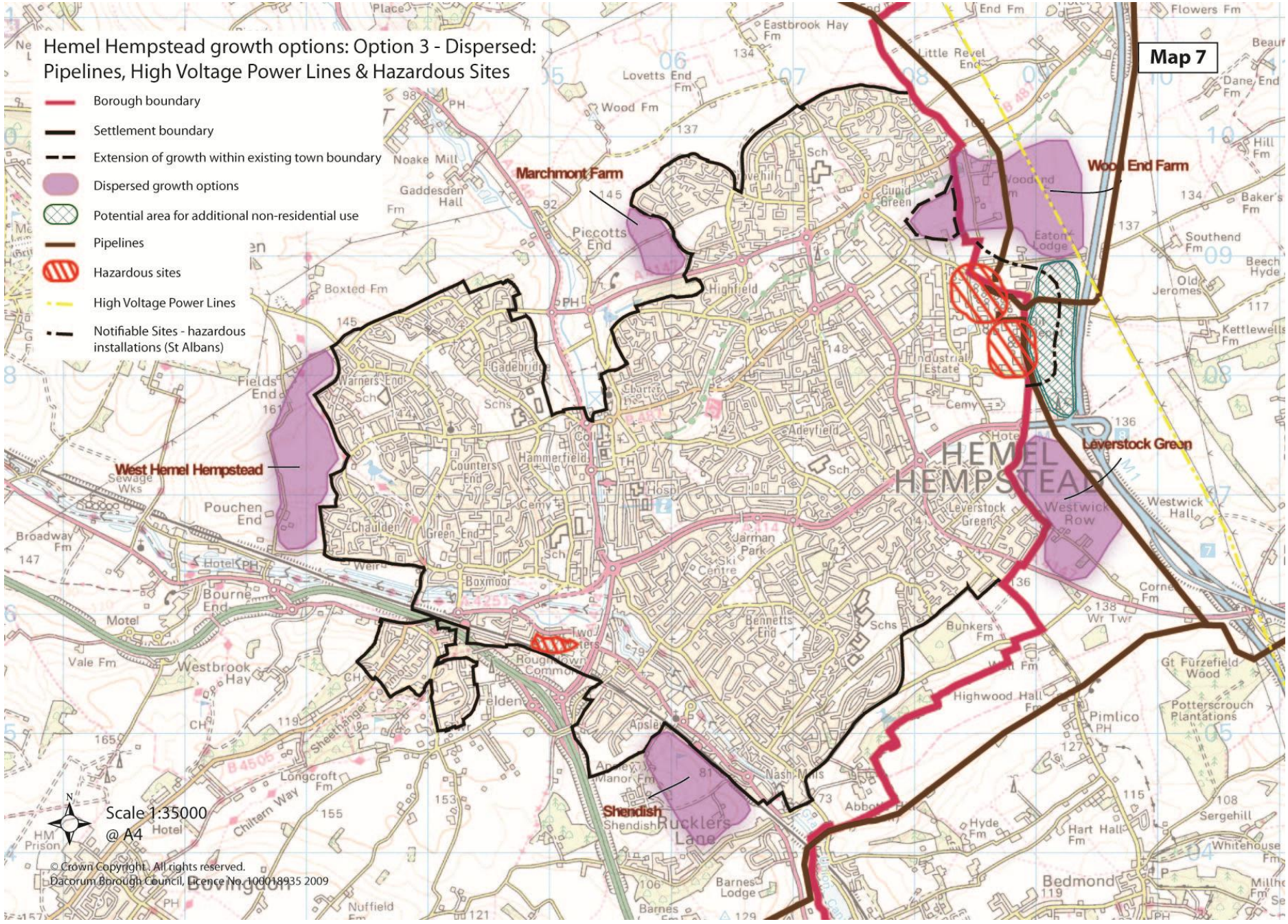
-  Borough boundary
-  Settlement boundary
-  Extension of growth within existing town boundary
-  Dispersed growth options
-  Potential area for additional non-residential use
-  Wildlife Sites
-  Ancient Semi-natural woodland
-  RIGGS
-  Landscape Development Areas (St Albans)

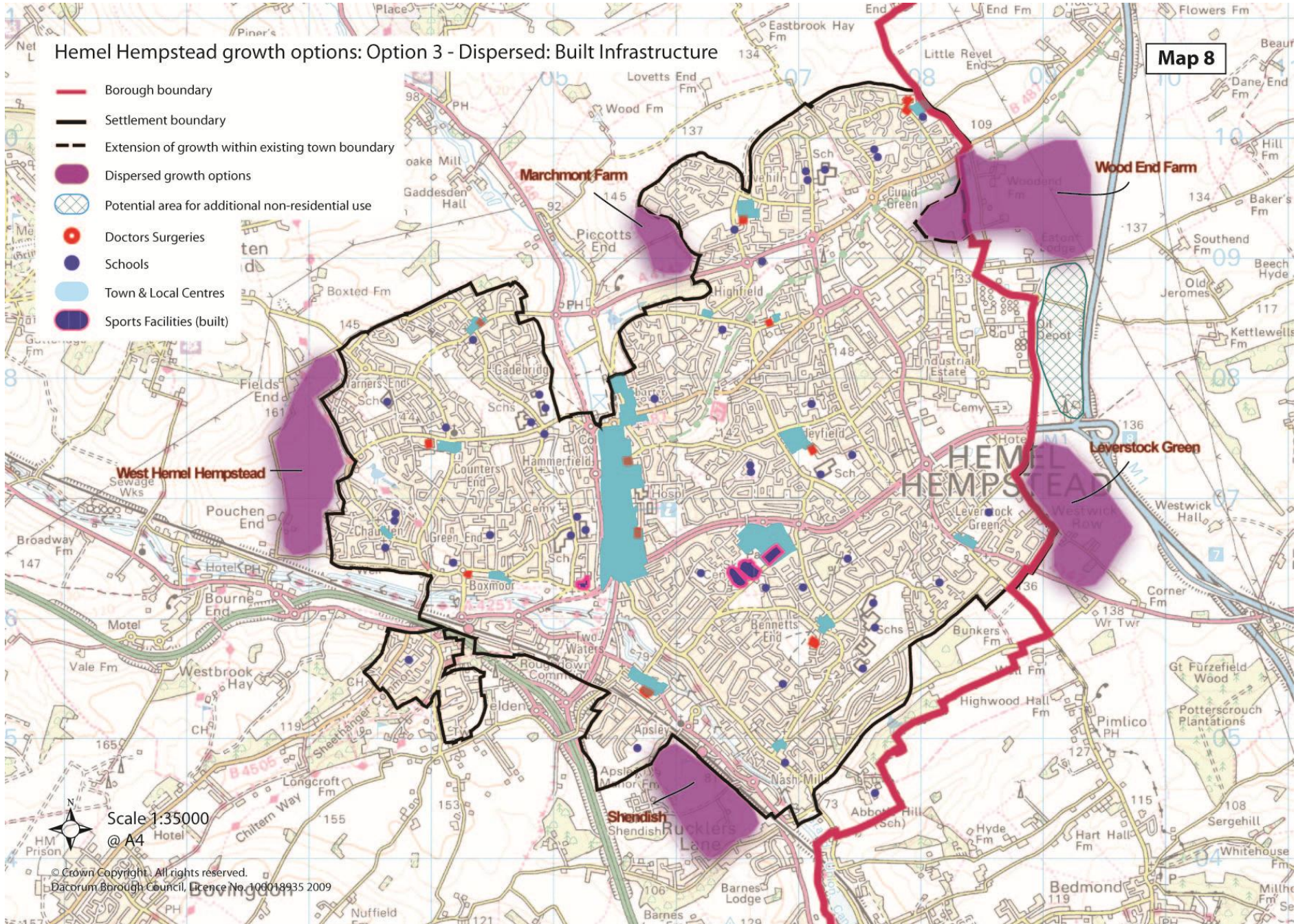


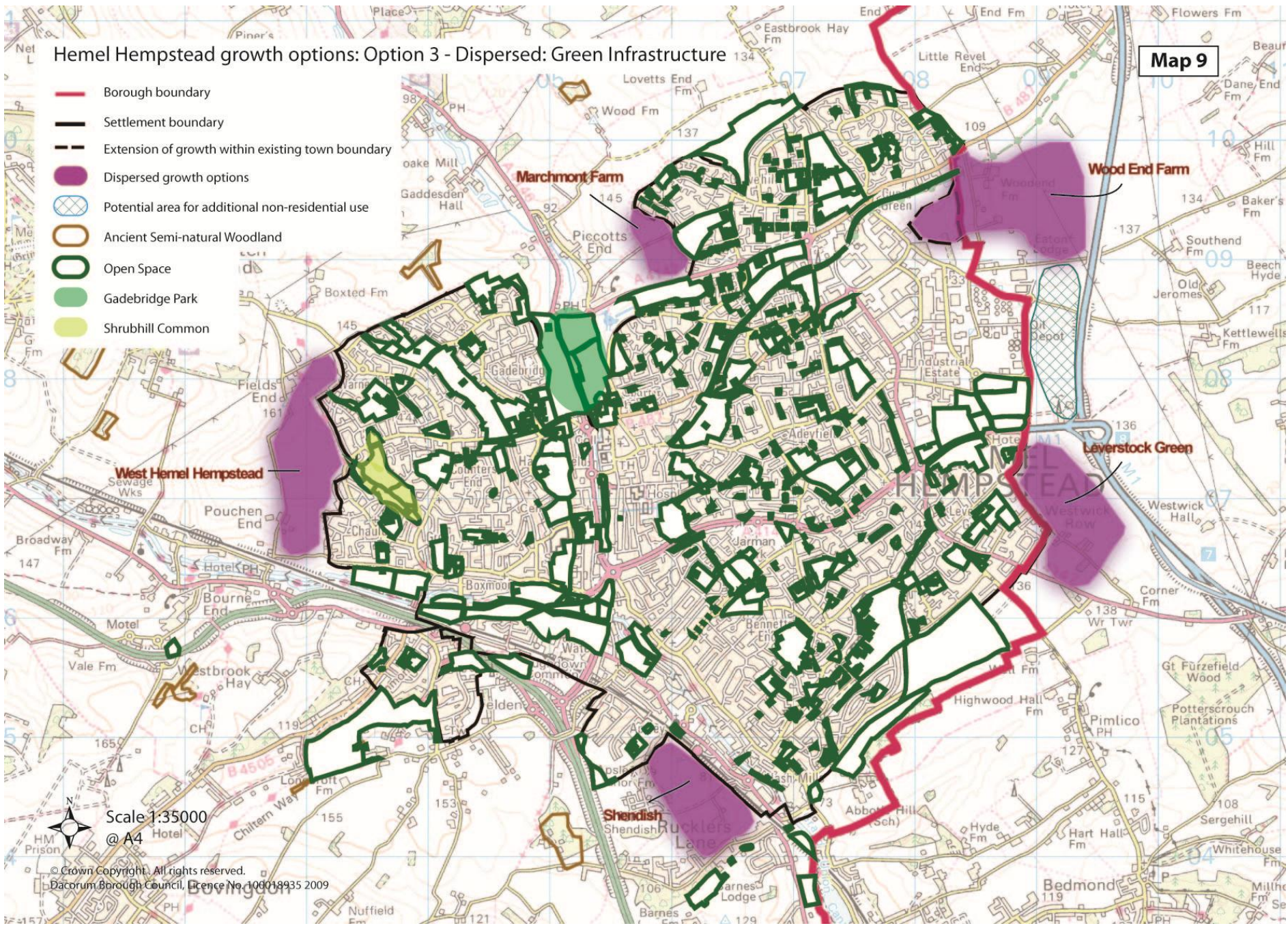
Scale 1:35000
 @ A4
 © Crown Copyright. All rights reserved.
 Dacorum Borough Council, Licence No. 100018935 2009







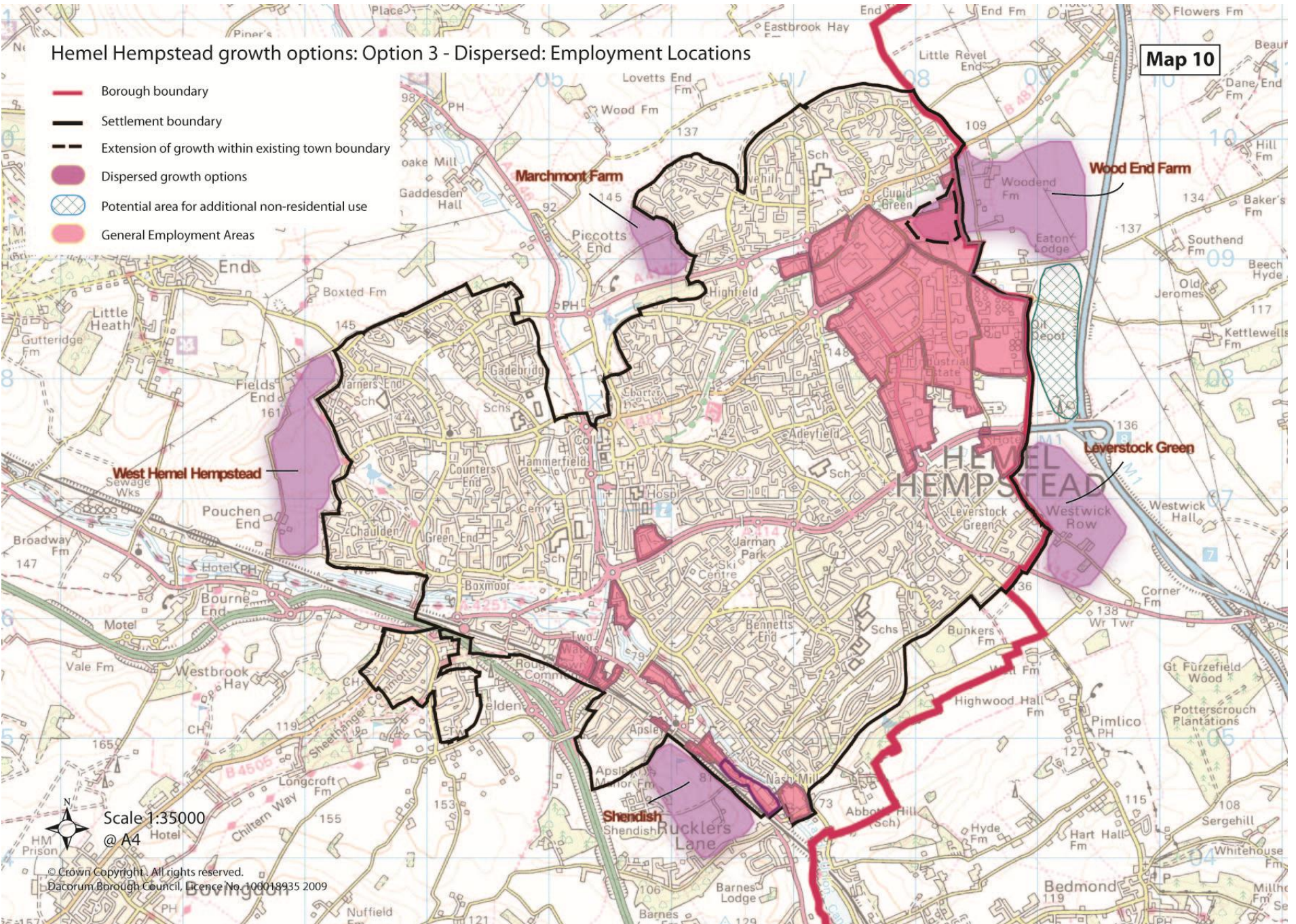




Hemel Hempstead growth options: Option 3 - Dispersed: Employment Locations

Map 10

- Borough boundary
- Settlement boundary
- Extension of growth within existing town boundary
- Dispersed growth options
- Potential area for additional non-residential use
- General Employment Areas

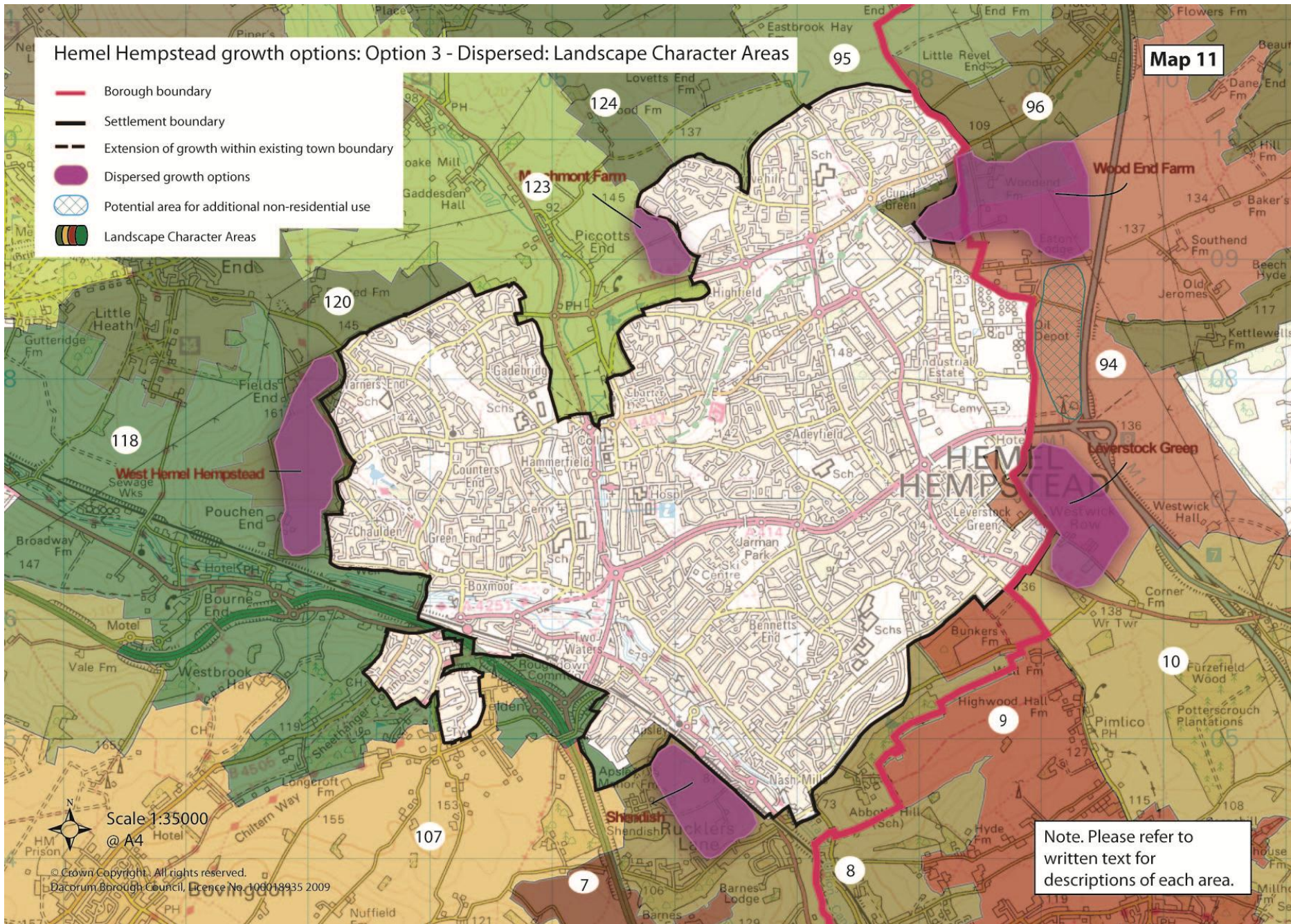


Scale 1:35000
@ A4
© Crown Copyright. All rights reserved.
Dacorum Borough Council, Licence No. 100018935 2009

Hemel Hempstead growth options: Option 3 - Dispersed: Landscape Character Areas

Map 11

-  Borough boundary
-  Settlement boundary
-  Extension of growth within existing town boundary
-  Dispersed growth options
-  Potential area for additional non-residential use
-  Landscape Character Areas



Scale 1:35000
@ A4

© Crown Copyright. All rights reserved.
Dacorum Borough Council, Licence No 100018935 2009

Note. Please refer to written text for descriptions of each area.

