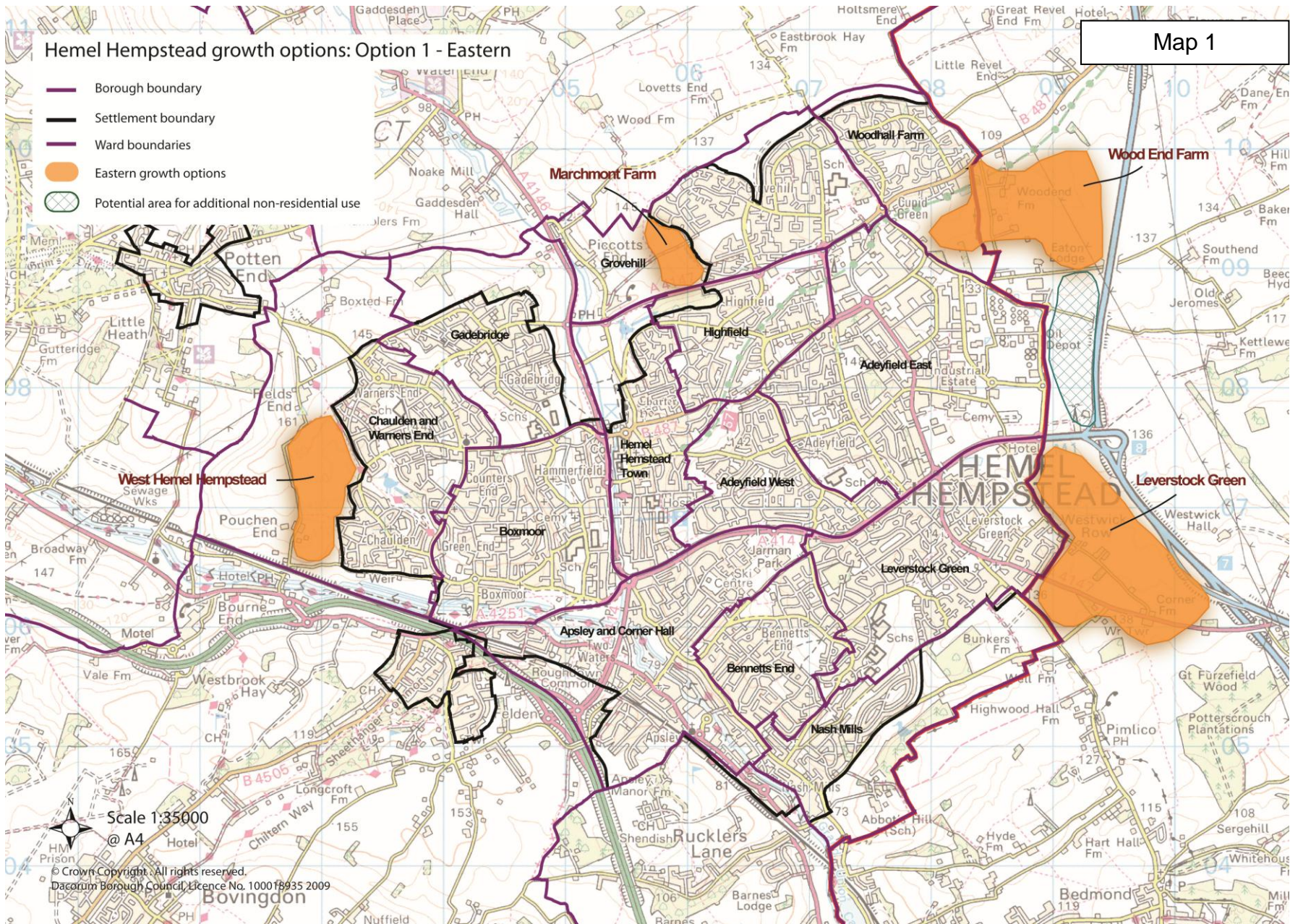
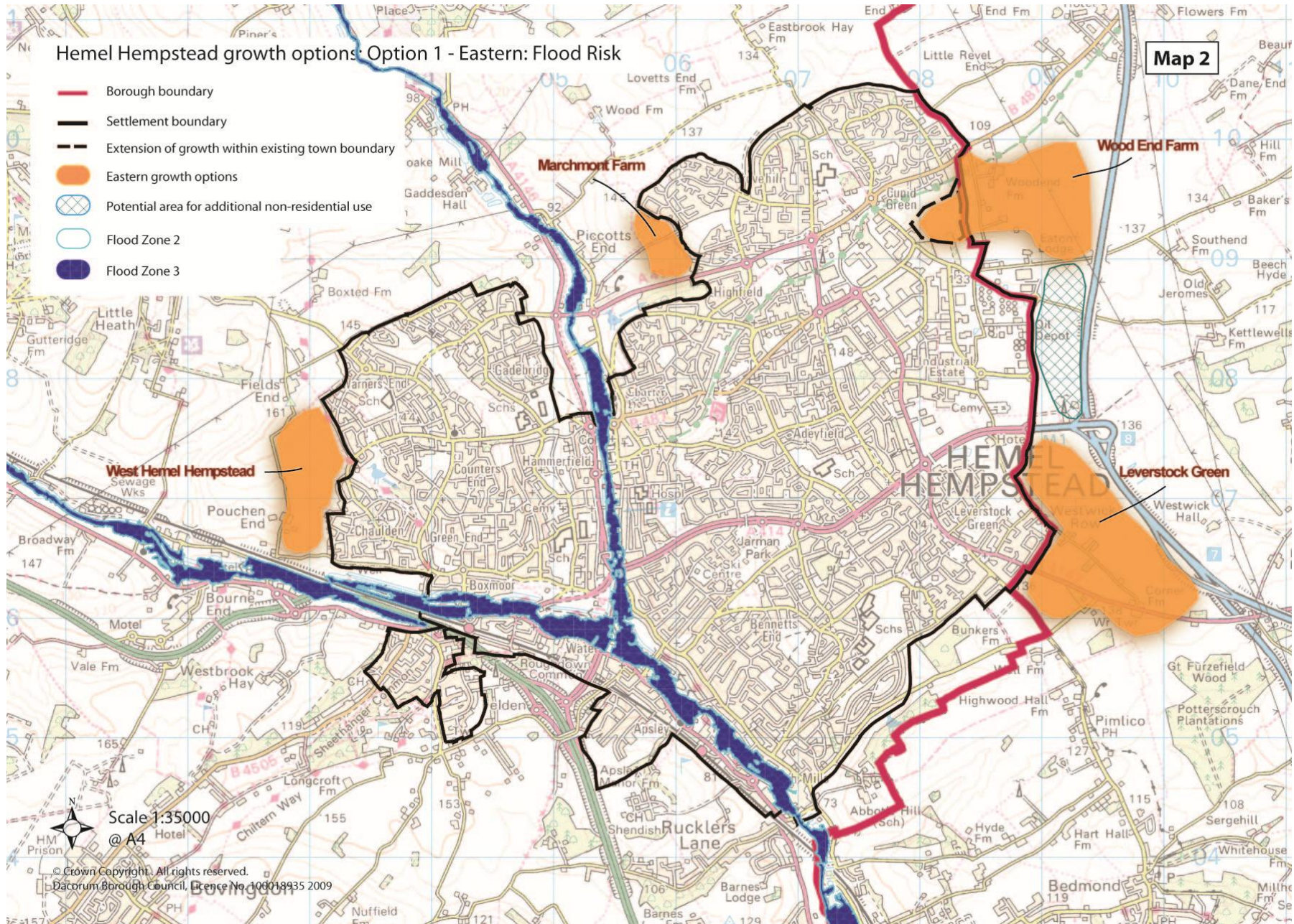
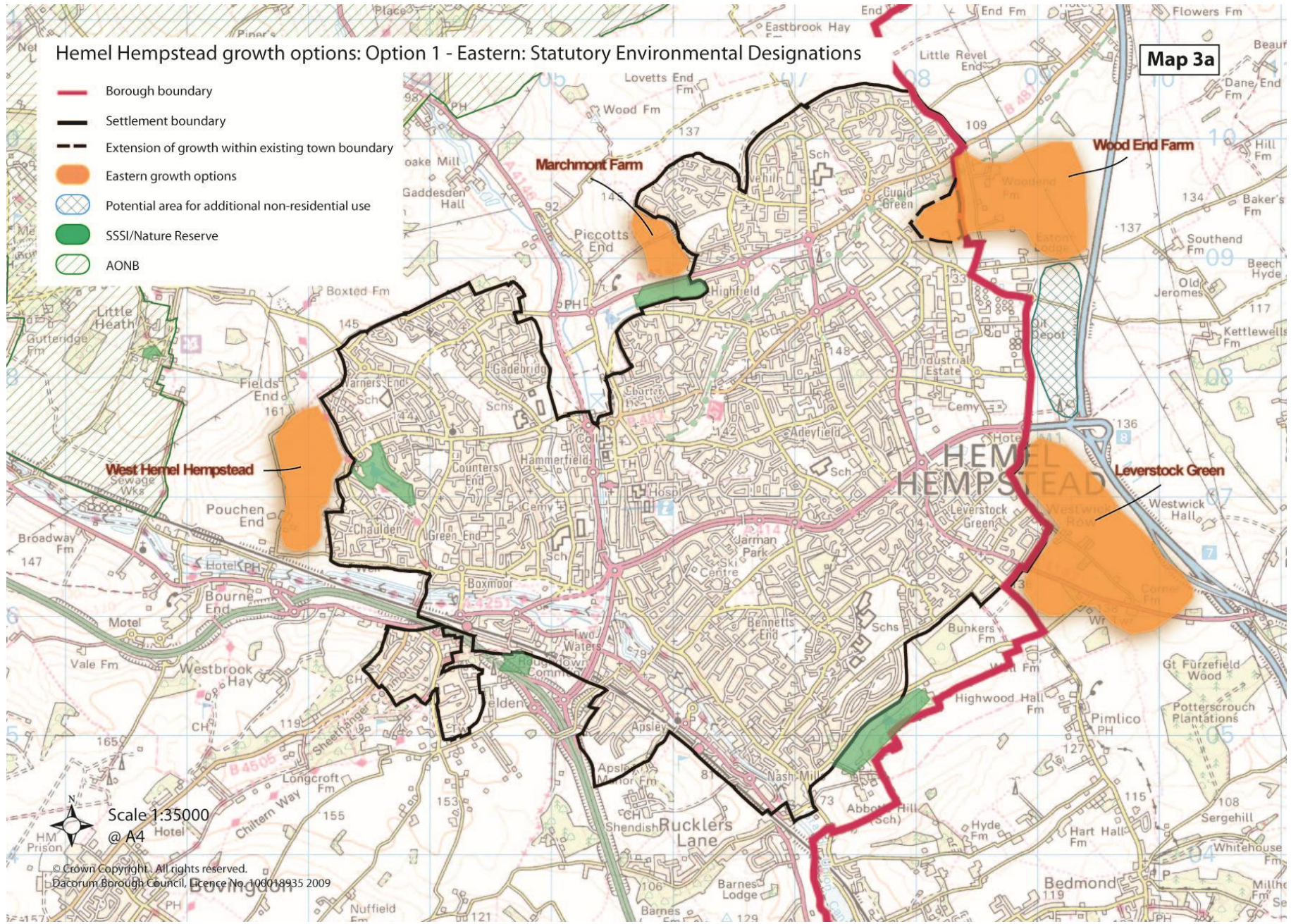


Maps for Option 1



Note: Development areas shown are indicative only.





Hemel Hempstead growth options: Option 1 - Eastern: Special Areas of Conservation

Map 3b

- Borough boundary
- Settlement boundary
- Eastern growth options
- Special Areas of Conservation
- 3,000m buffer of Special Areas of Conservation



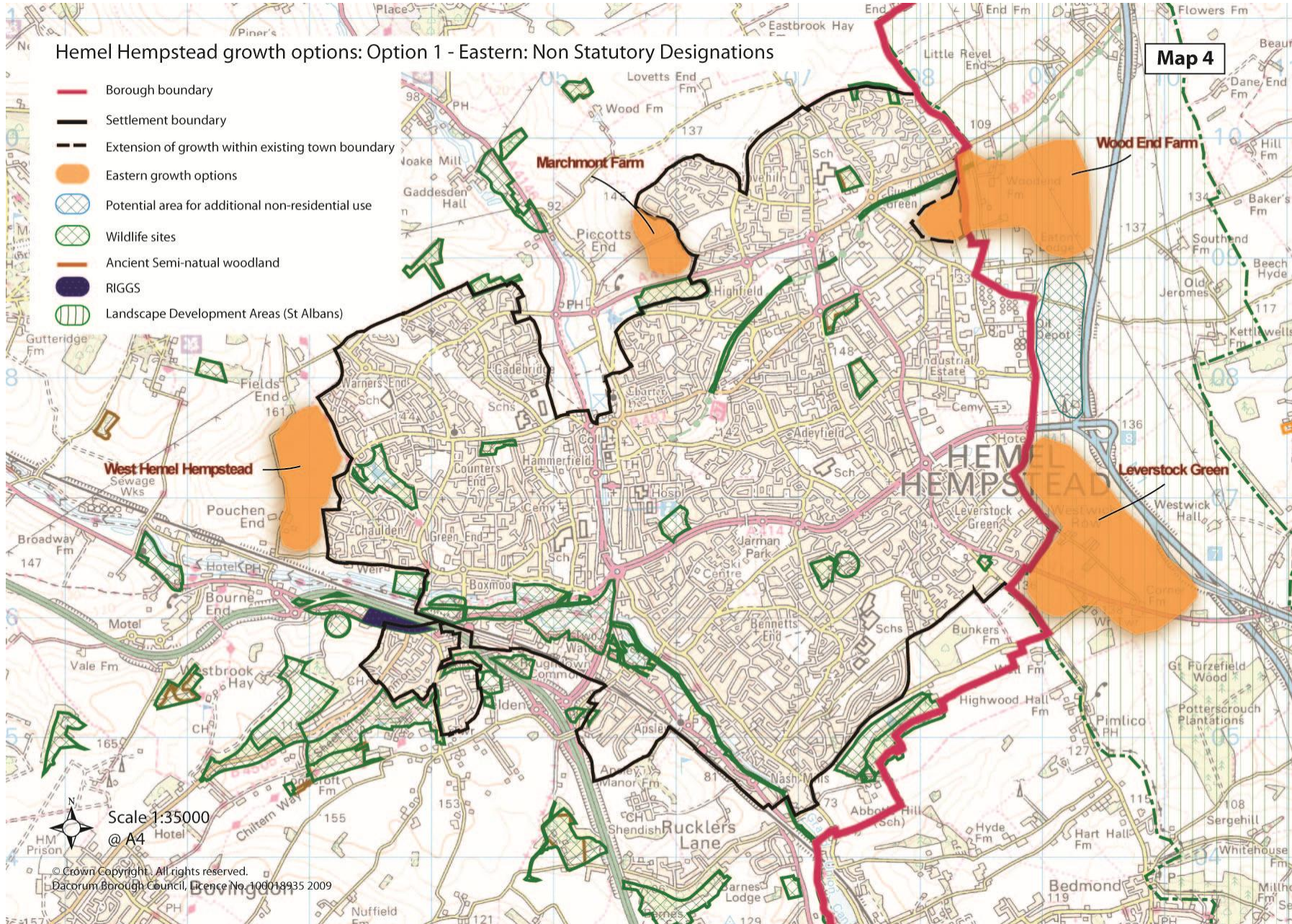
Scale 1:100,000
@ A4

© Crown Copyright. All rights reserved.
Dacorum Borough Council, Licence No. 100018935 2009

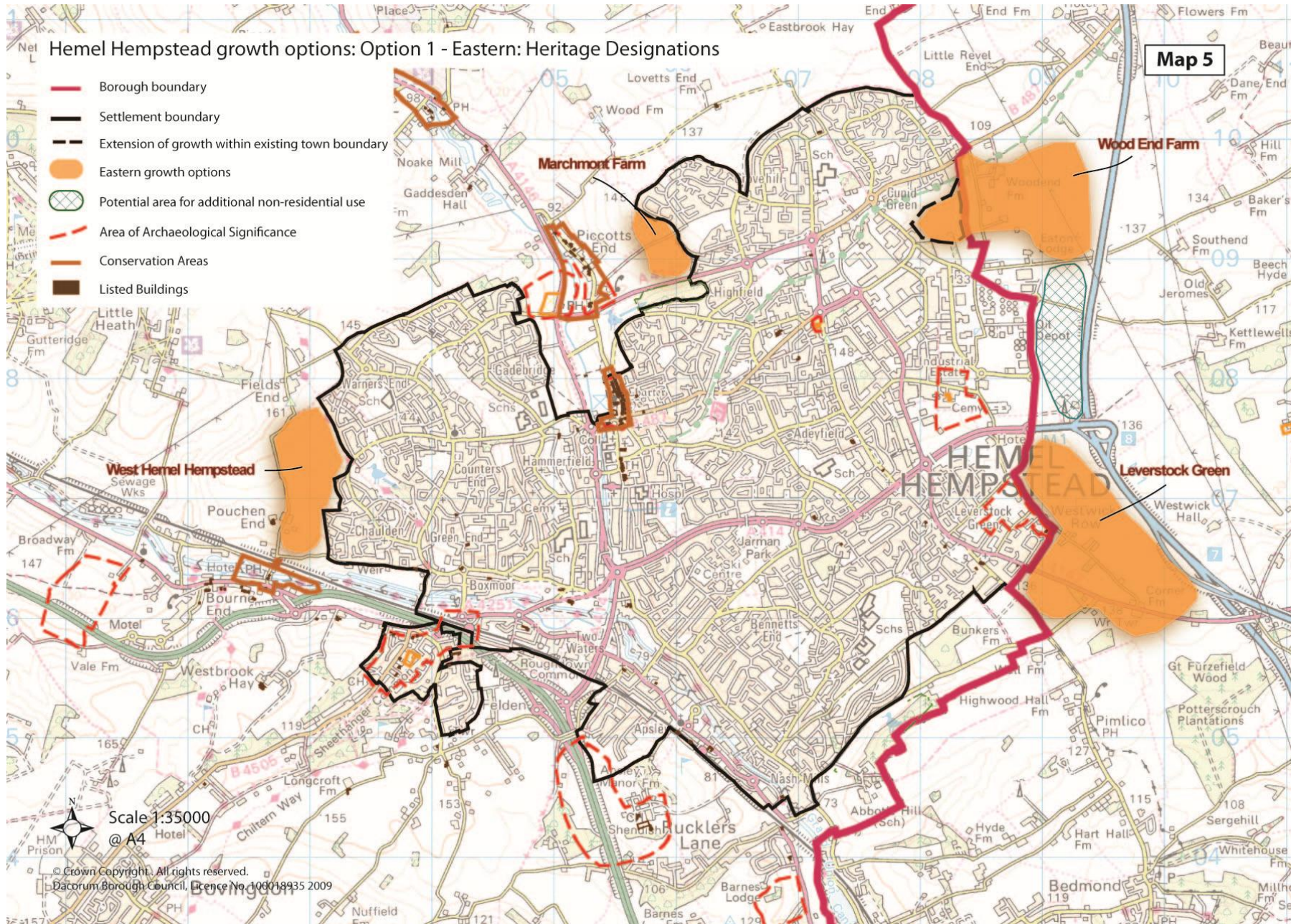
Hemel Hempstead growth options: Option 1 - Eastern: Non Statutory Designations

Map 4

-  Borough boundary
-  Settlement boundary
-  Extension of growth within existing town boundary
-  Eastern growth options
-  Potential area for additional non-residential use
-  Wildlife sites
-  Ancient Semi-natural woodland
-  RIGGS
-  Landscape Development Areas (St Albans)









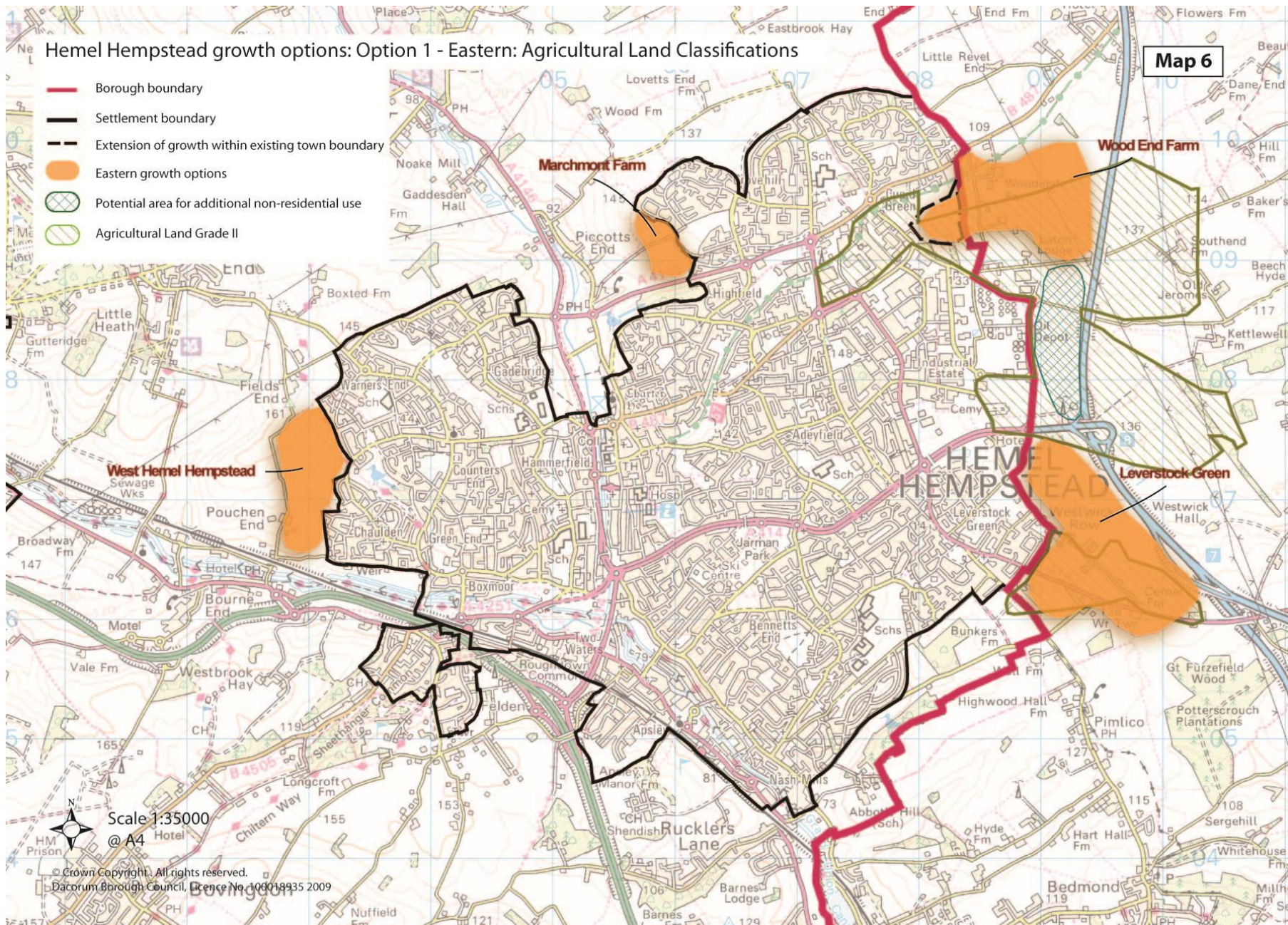
© Crown Copyright. All rights reserved.
 Dacorum Borough Council, Licence No. 100018935 2009



Hemel Hempstead growth options: Option 1 - Eastern: Agricultural Land Classifications










Map 6

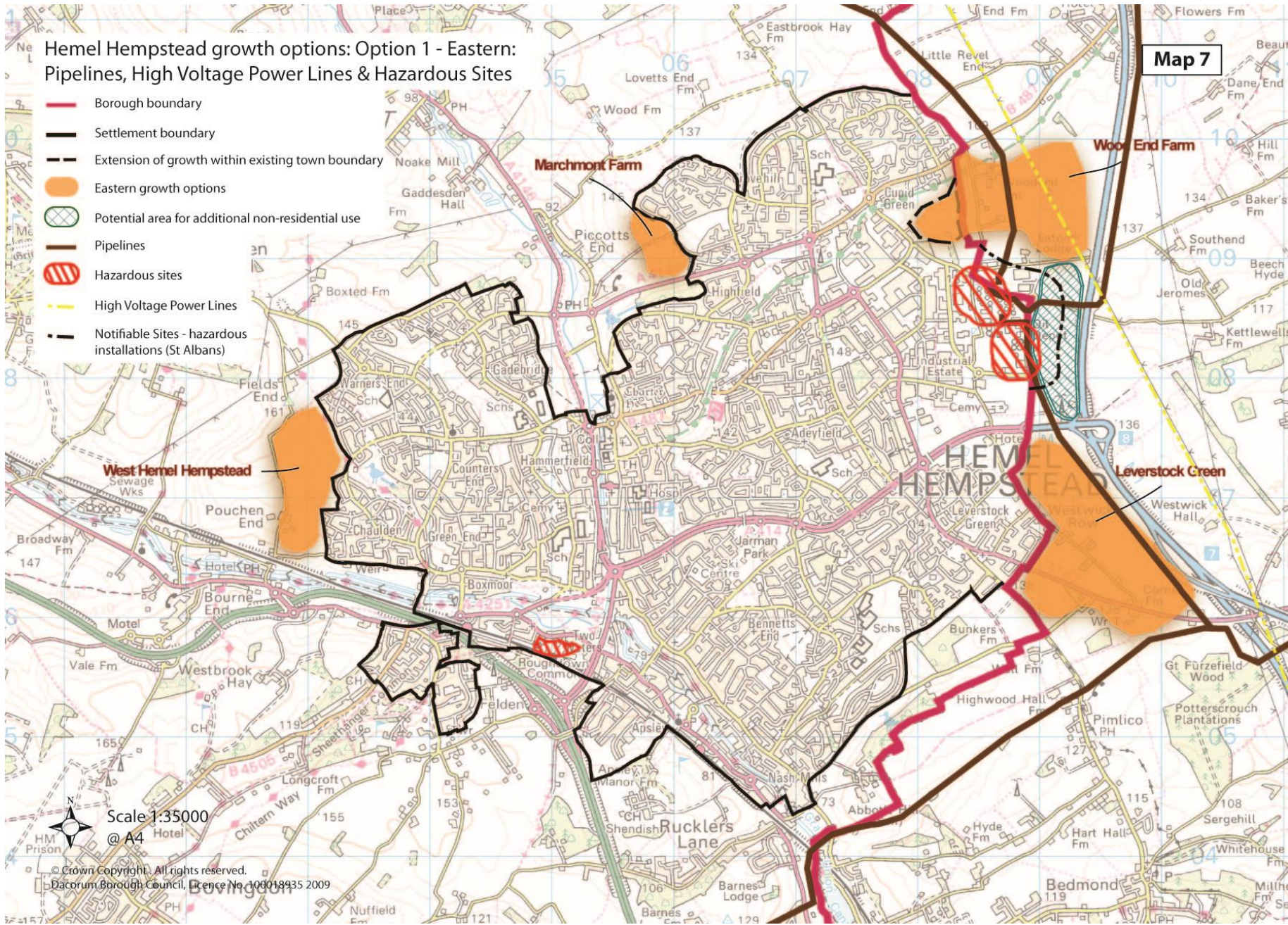
-  Borough boundary
-  Settlement boundary
-  Extension of growth within existing town boundary
-  Eastern growth options
-  Potential area for additional non-residential use
-  Agricultural Land Grade II



Scale 1:35000
@ A4
© Crown Copyright. All rights reserved.
Dacorum Borough Council, Licence No. 100018935 2009

Hemel Hempstead growth options: Option 1 - Eastern: Pipelines, High Voltage Power Lines & Hazardous Sites










-  Borough boundary
-  Settlement boundary
-  Extension of growth within existing town boundary
-  Eastern growth options
-  Potential area for additional non-residential use
-  Pipelines
-  Hazardous sites
-  High Voltage Power Lines
-  Notifiable Sites - hazardous installations (St Albans)

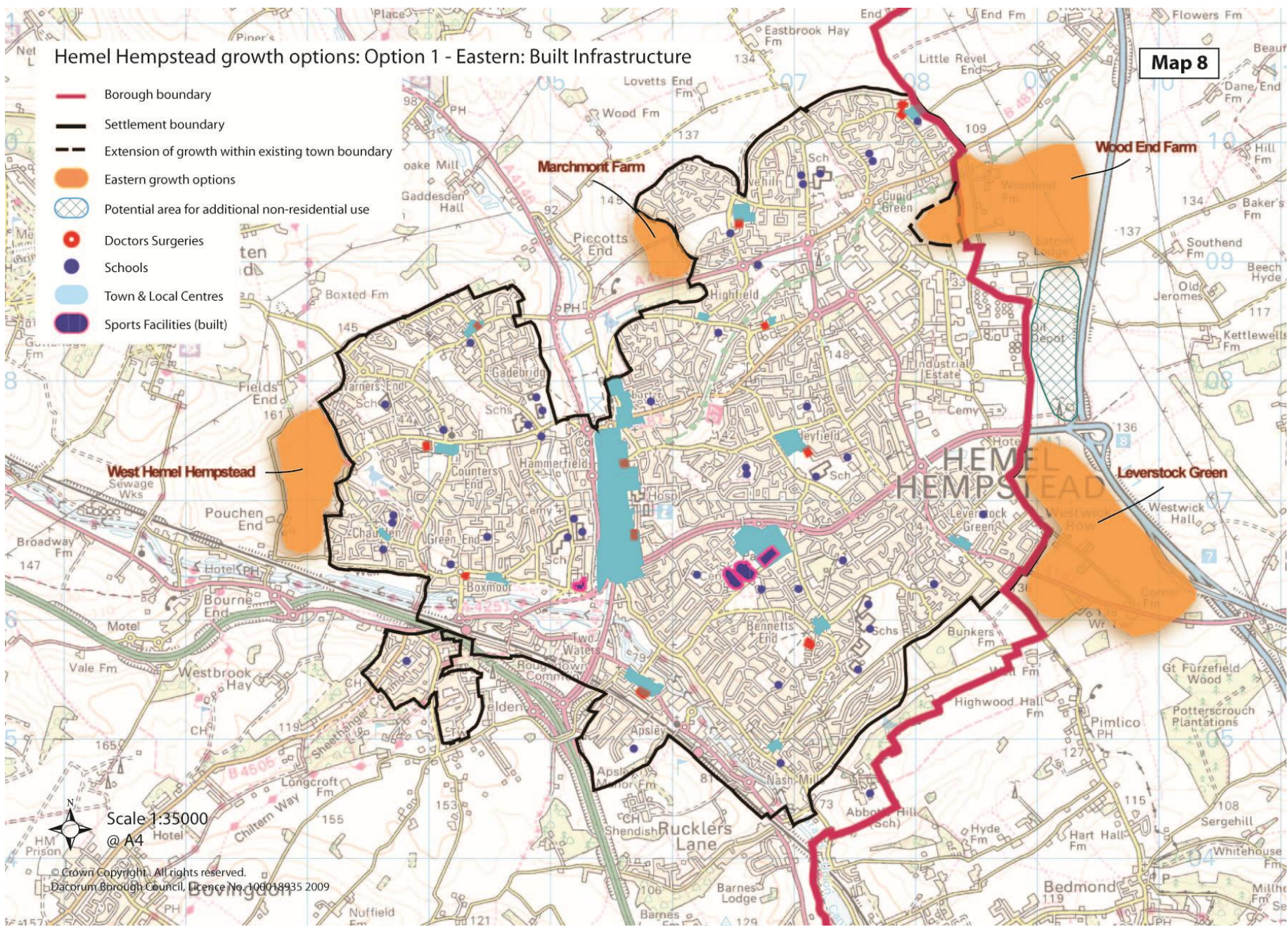


© Crown Copyright. All rights reserved.
Dacorum Borough Council, Licence No. 100018935 2009

Map 8










Hemel Hempstead growth options: Option 1 - Eastern: Built Infrastructure

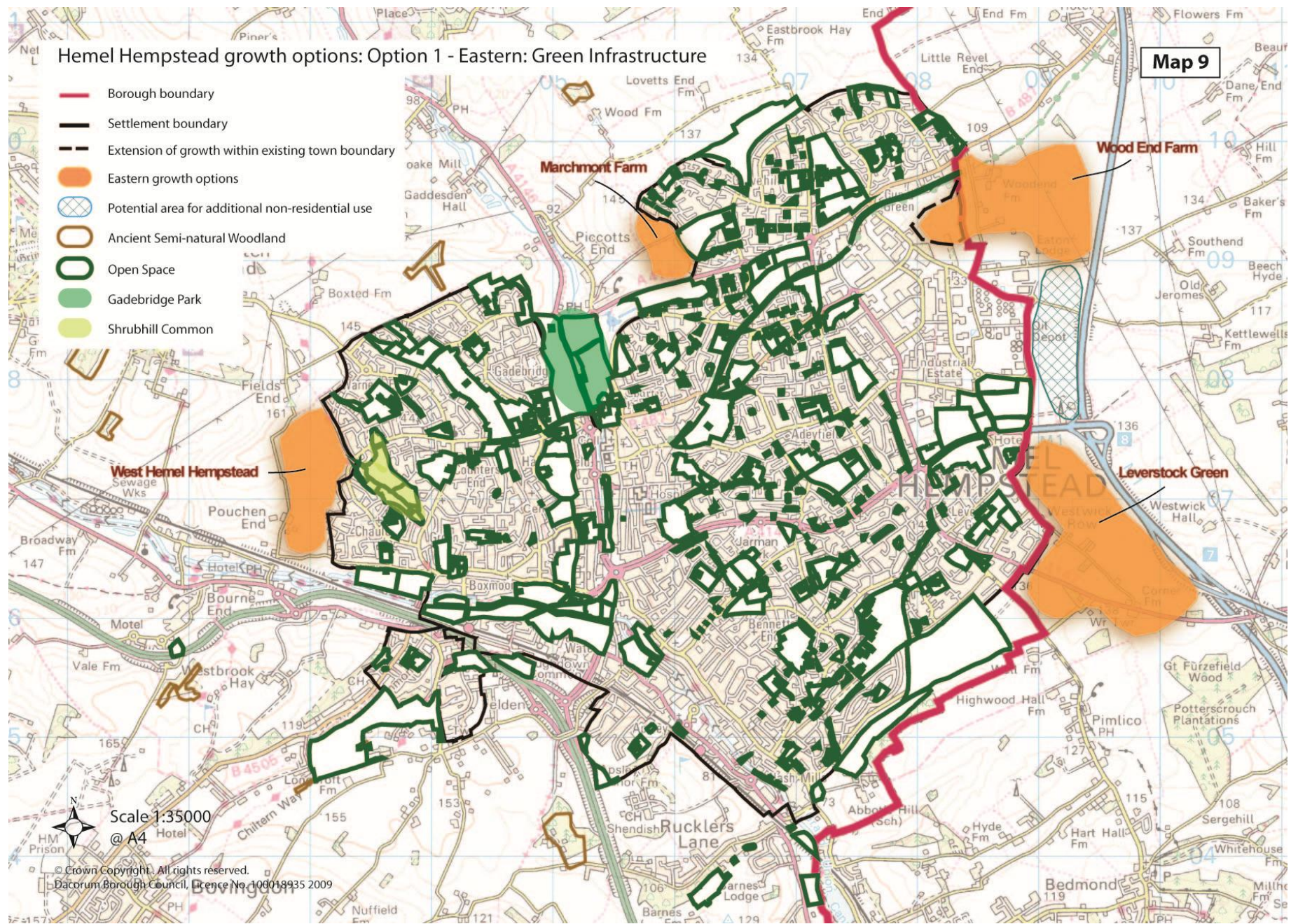
-  Borough boundary
-  Settlement boundary
-  Extension of growth within existing town boundary
-  Eastern growth options
-  Potential area for additional non-residential use
-  Doctors Surgeries
-  Schools
-  Town & Local Centres
-  Sports Facilities (built)



Map 9

Hemel Hempstead growth options: Option 1 - Eastern: Green Infrastructure

-  Borough boundary
-  Settlement boundary
-  Extension of growth within existing town boundary
-  Eastern growth options
-  Potential area for additional non-residential use
-  Ancient Semi-natural Woodland
-  Open Space
-  Gadebridge Park
-  Shrubhill Common



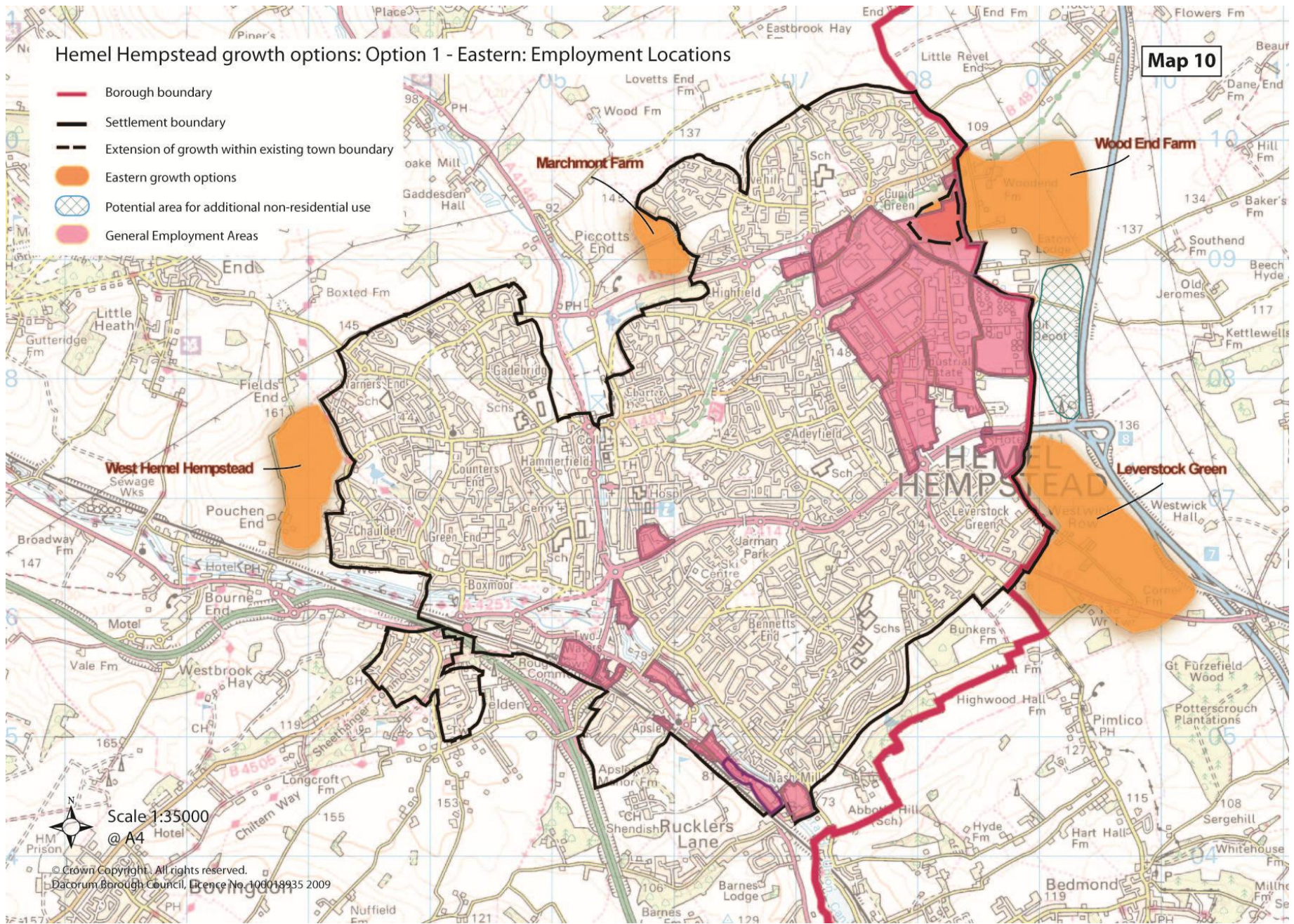
Scale 1:35000
@ A4

© Crown Copyright. All rights reserved.
Dacorum Borough Council, Licence No. 100018935 2009

Hemel Hempstead growth options: Option 1 - Eastern: Employment Locations

Map 10







- Borough boundary
- Settlement boundary
- Extension of growth within existing town boundary
- Eastern growth options
- Potential area for additional non-residential use
- General Employment Areas

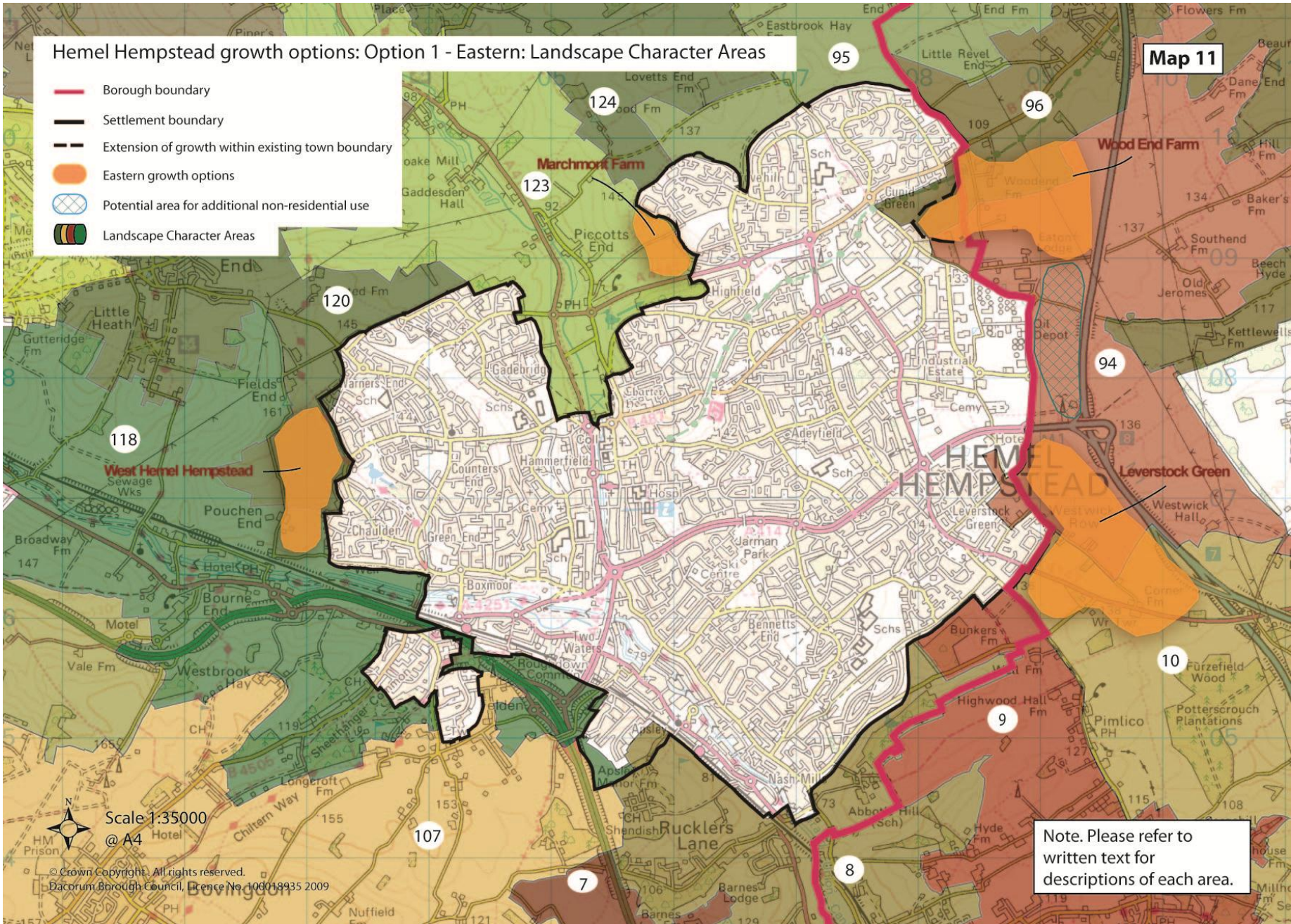


Scale 1:35000
 @ A4
 © Crown Copyright. All rights reserved.
 Dacorum Borough Council, Licence No. 100018935 2009

Hemel Hempstead growth options: Option 1 - Eastern: Landscape Character Areas

Map 11

-  Borough boundary
-  Settlement boundary
-  Extension of growth within existing town boundary
-  Eastern growth options
-  Potential area for additional non-residential use
-  Landscape Character Areas



















Scale 1:35000
@ A4
© Crown Copyright. All rights reserved.
Dacorum Borough Council, Licence No. 100018935 2009

Note. Please refer to written text for descriptions of each area.

Map 12

Hemel Hempstead growth options: Option 1 - Eastern: Transport Linkages

-  Borough boundary
-  Settlement boundary
-  Extension of growth within existing town boundary
-  Eastern growth options
-  Potential area for additional non-residential use
-  Hemel Railway Station
-  Apsley Railway Station
-  Hemel Bus Station
-  Railway Line
-  Priority cycle routes
-  Secondary cycle routes
-  Rights of Way
-  Proposed National Cycle Route

-  Primary vehicular route
-  Local vehicular route
-  Potential Park & Ride at Maylands

Scale 1:35000 @ A4

© Crown Copyright. All rights reserved.
Dacorum Borough Council, Licence No. 100018935 2009

