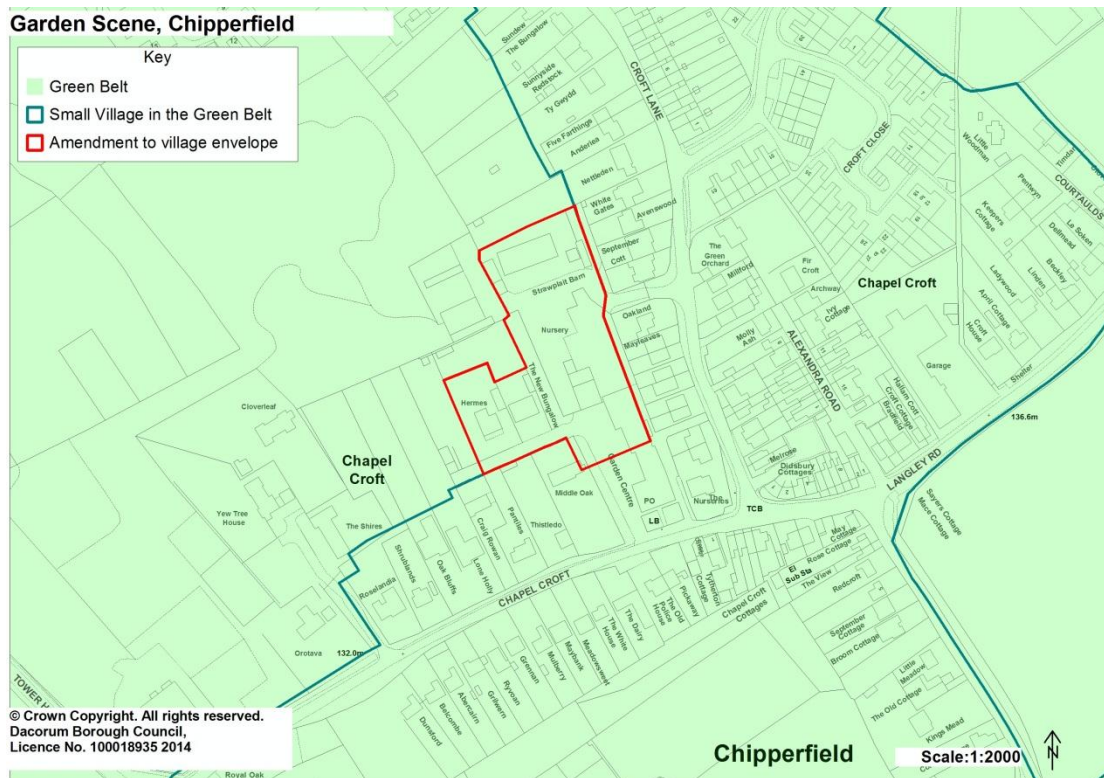
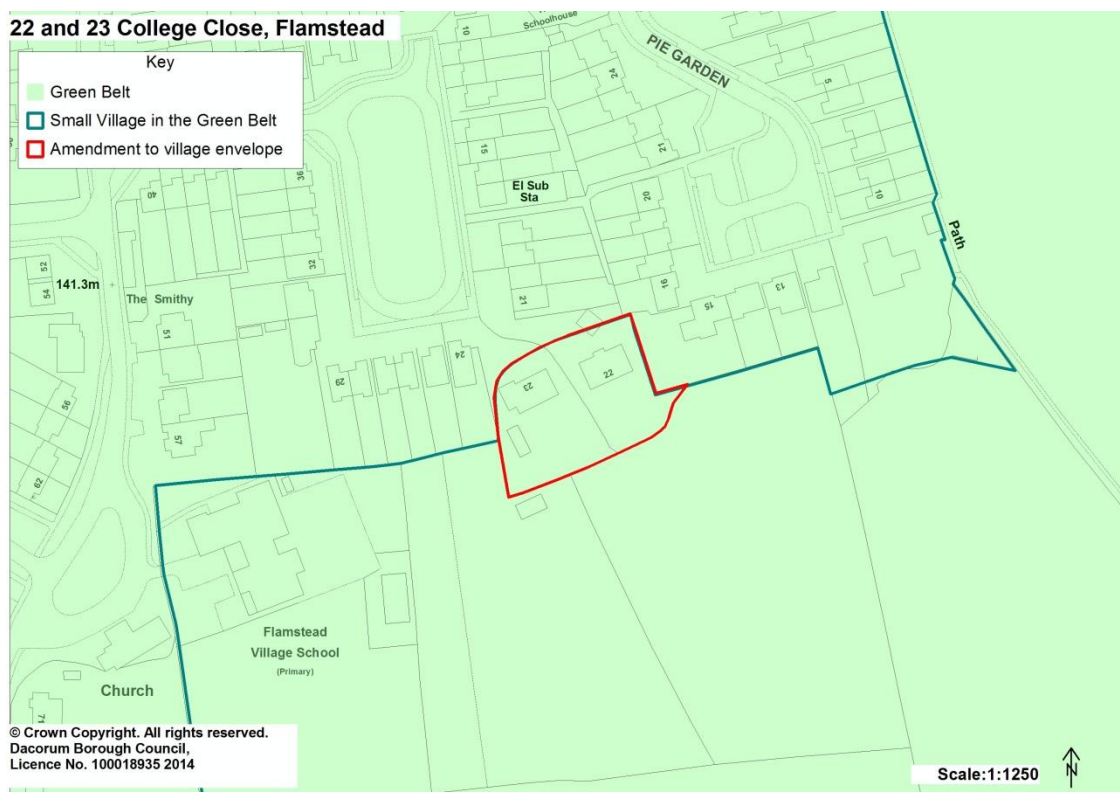


Appendix 3: Proposed Village Envelope Maps

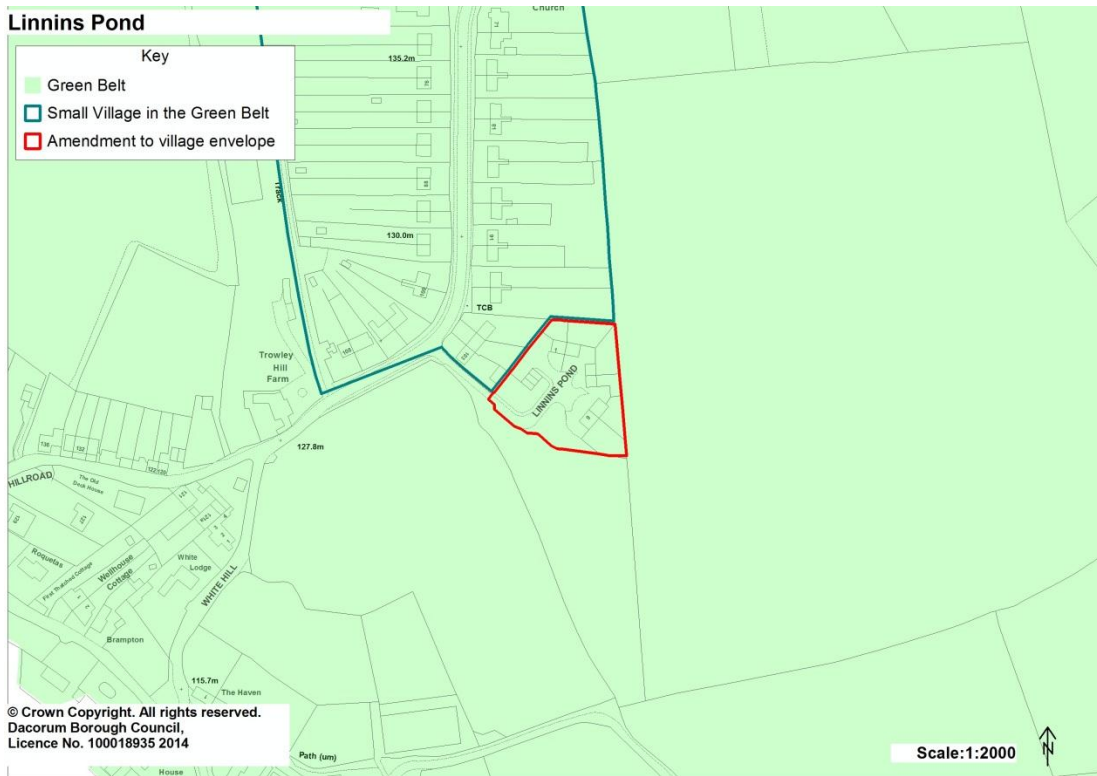
VB/1 Garden Scene Nursery, Hermes and The New Bungalow



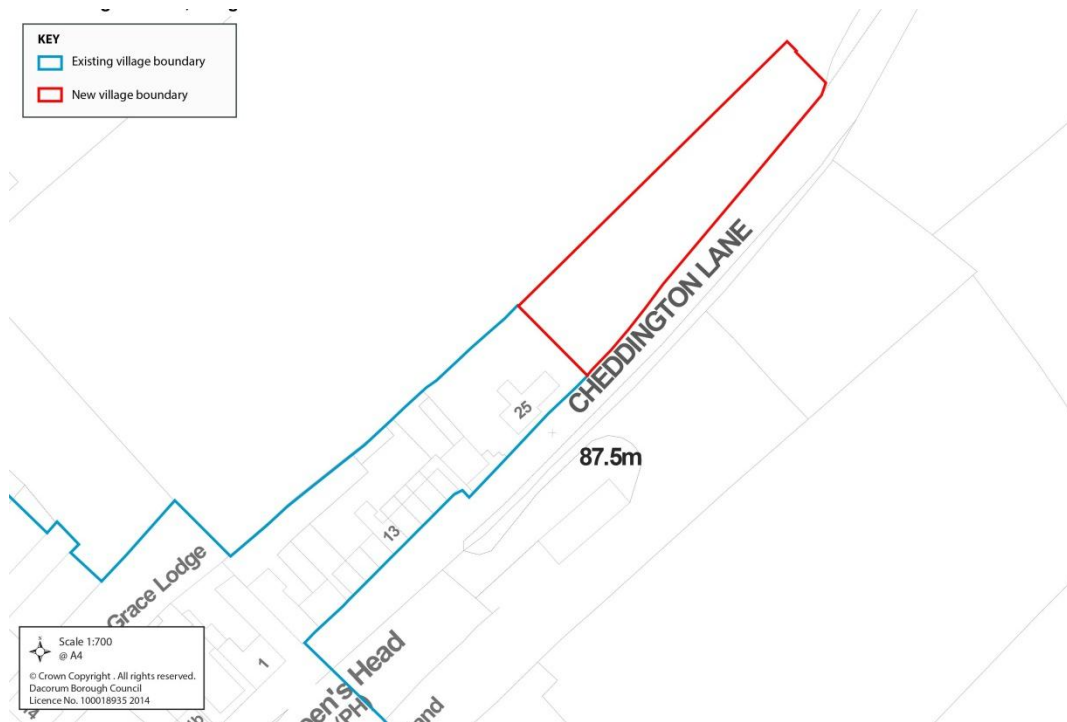
VB/2 22 and 23 College Close



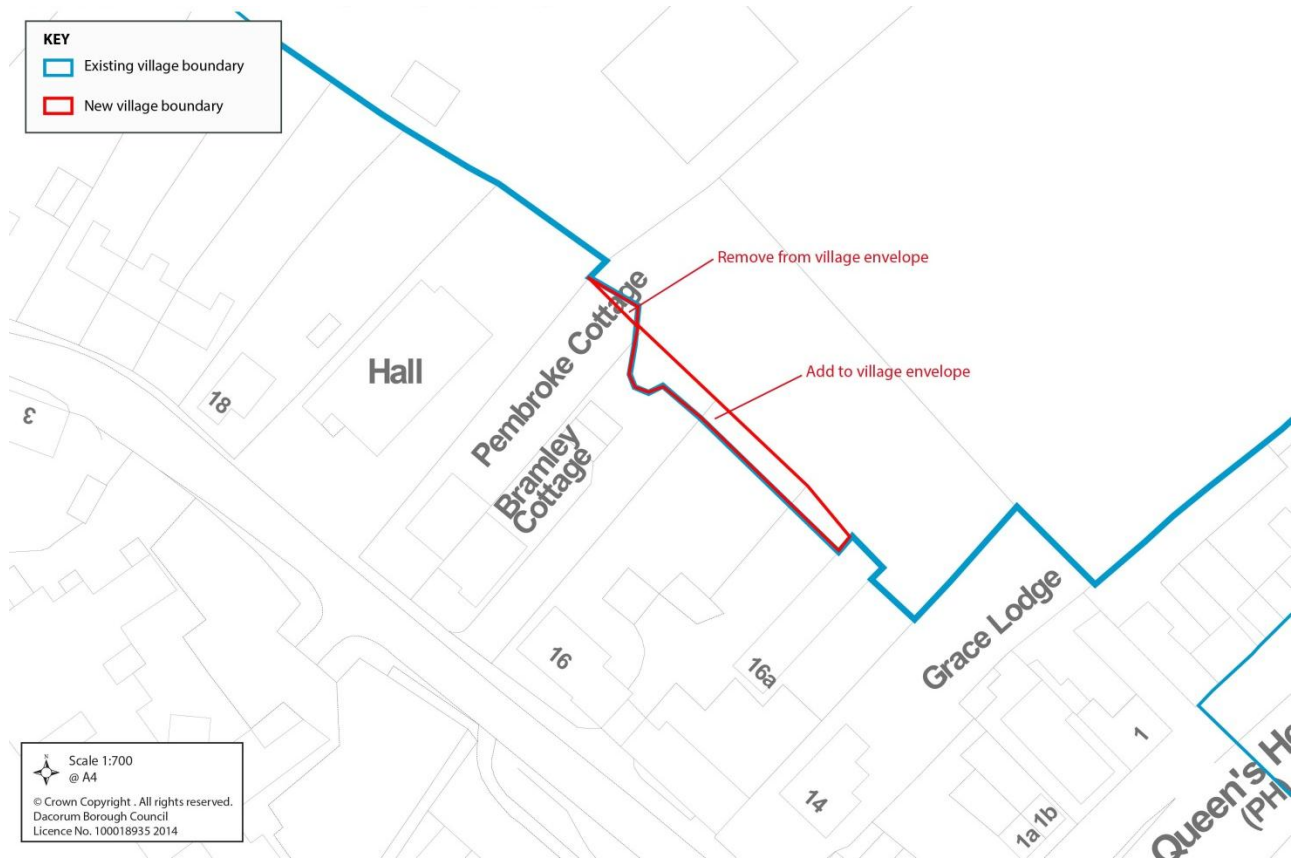
VB/3 Linnins Pond



VB/4 Rear garden at 25 Cheddington Road

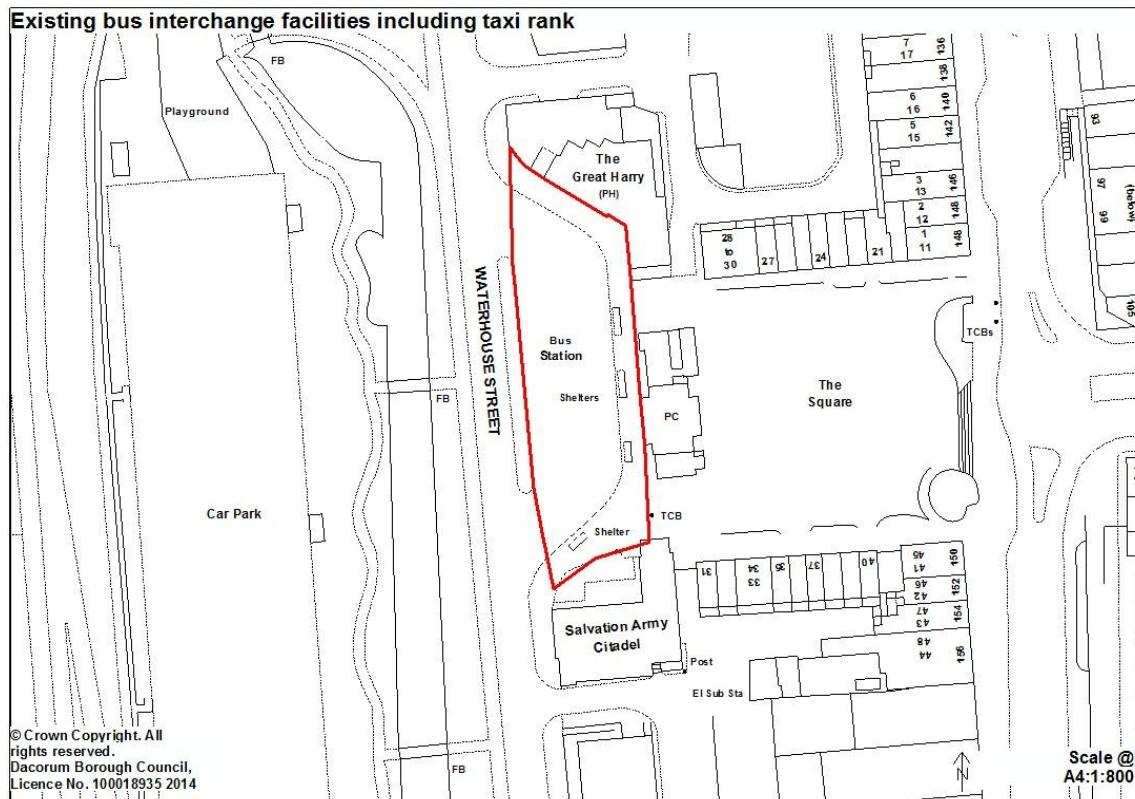


VB/5 Land rear of 16 to Pembroke Cottage, Tring Road, Long Marston

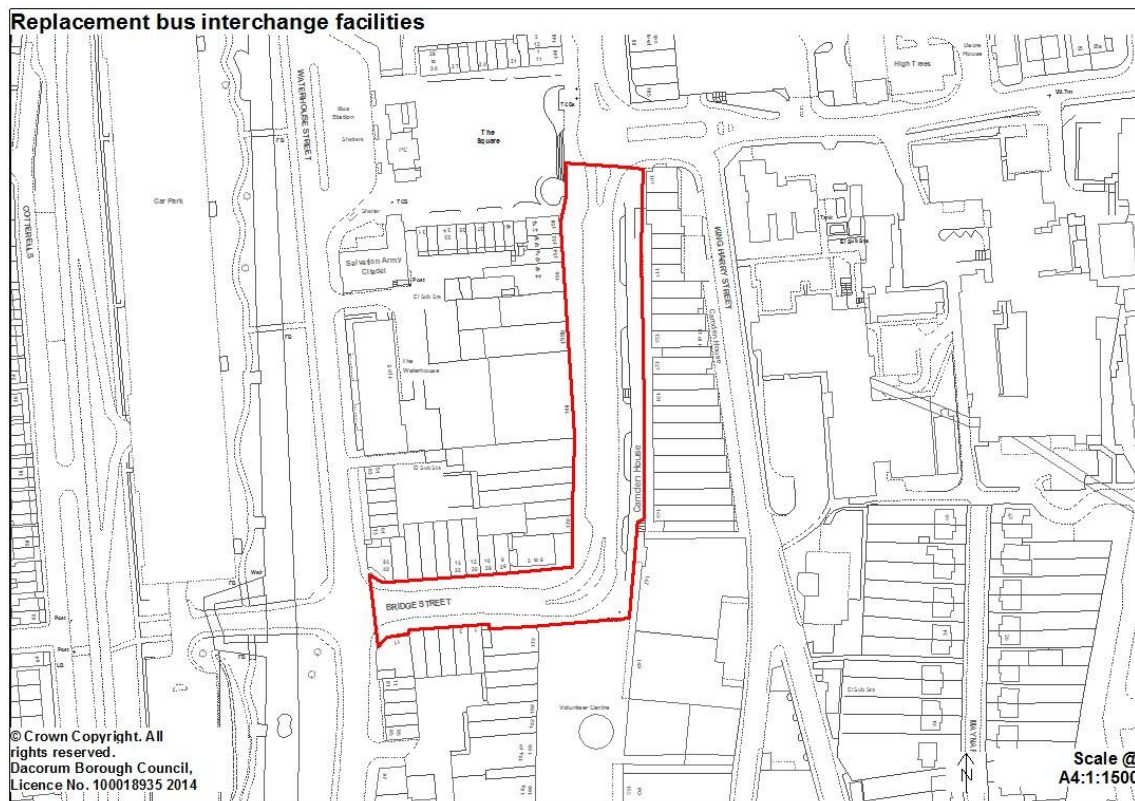


Appendix 4: Transport Proposals Maps

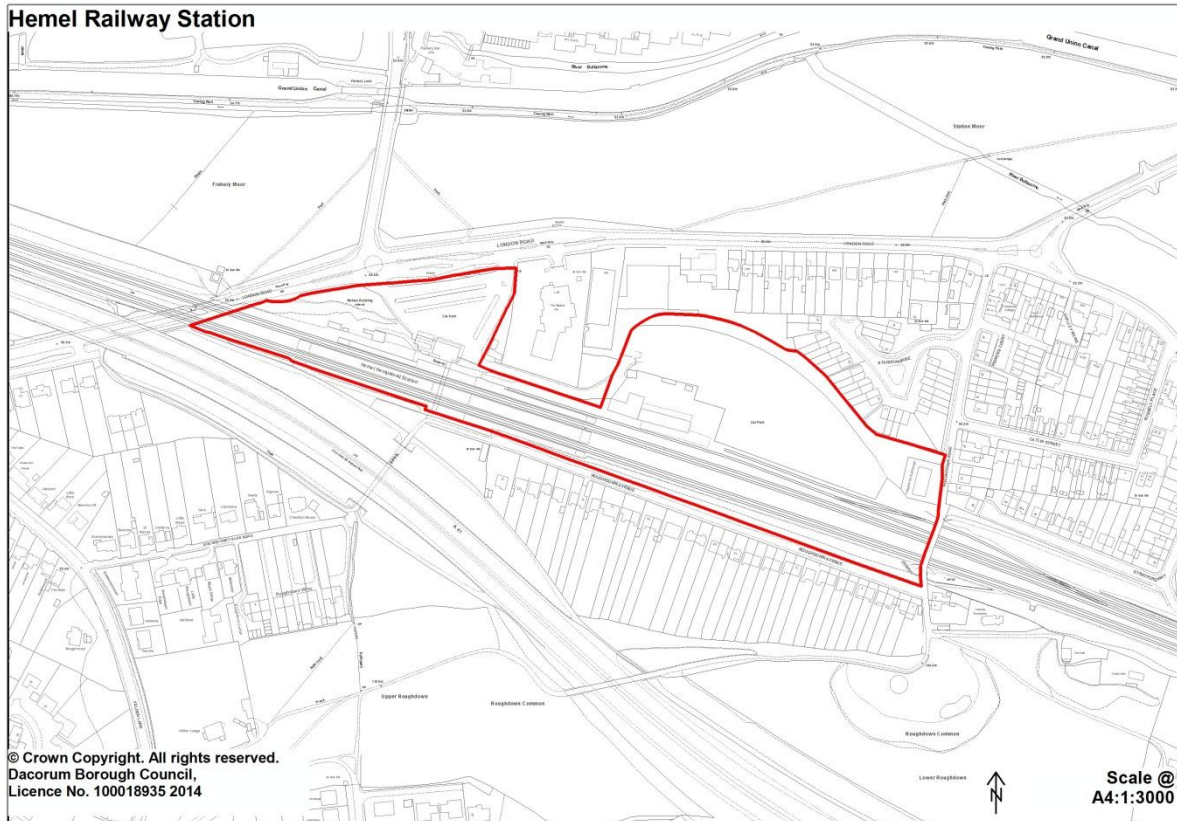
T/1 Existing bus interchange facilities including taxi rank (Hemel Hempstead)



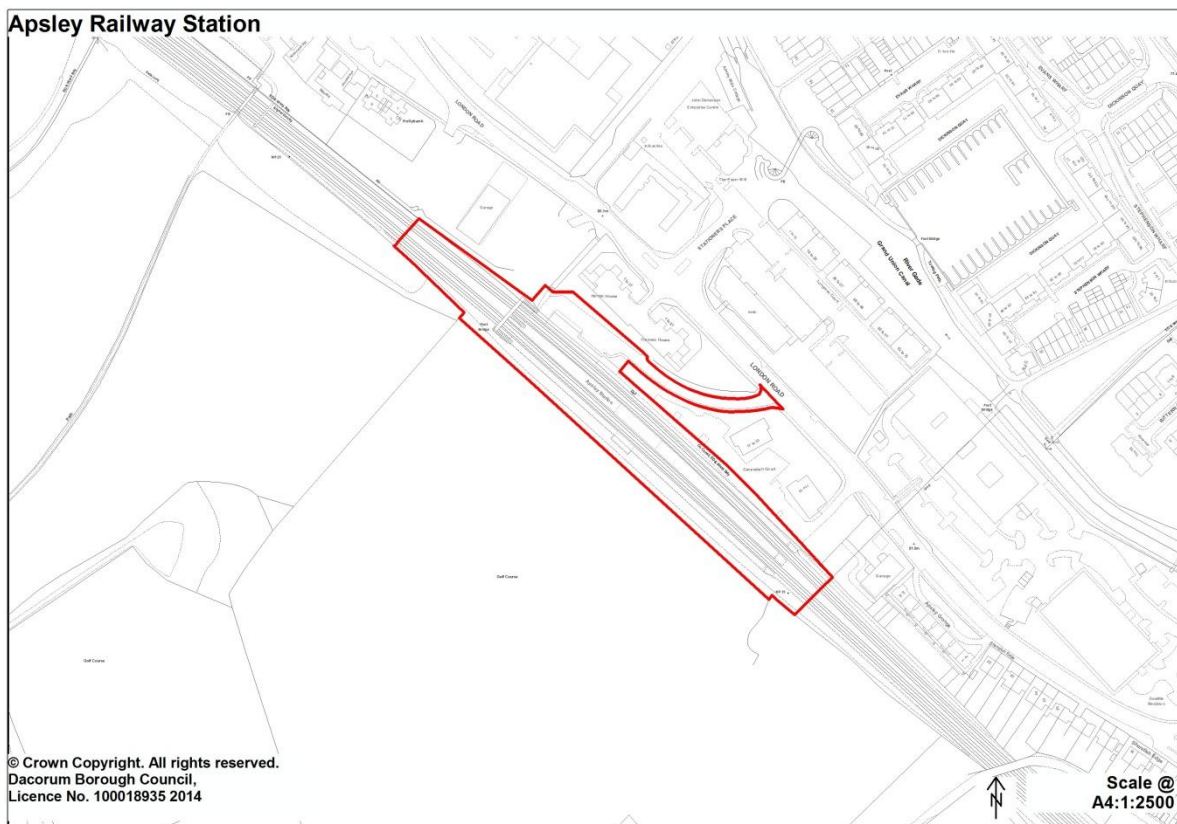
T/2 Replacement bus interchange facilities including taxi rank (Hemel Hempstead)



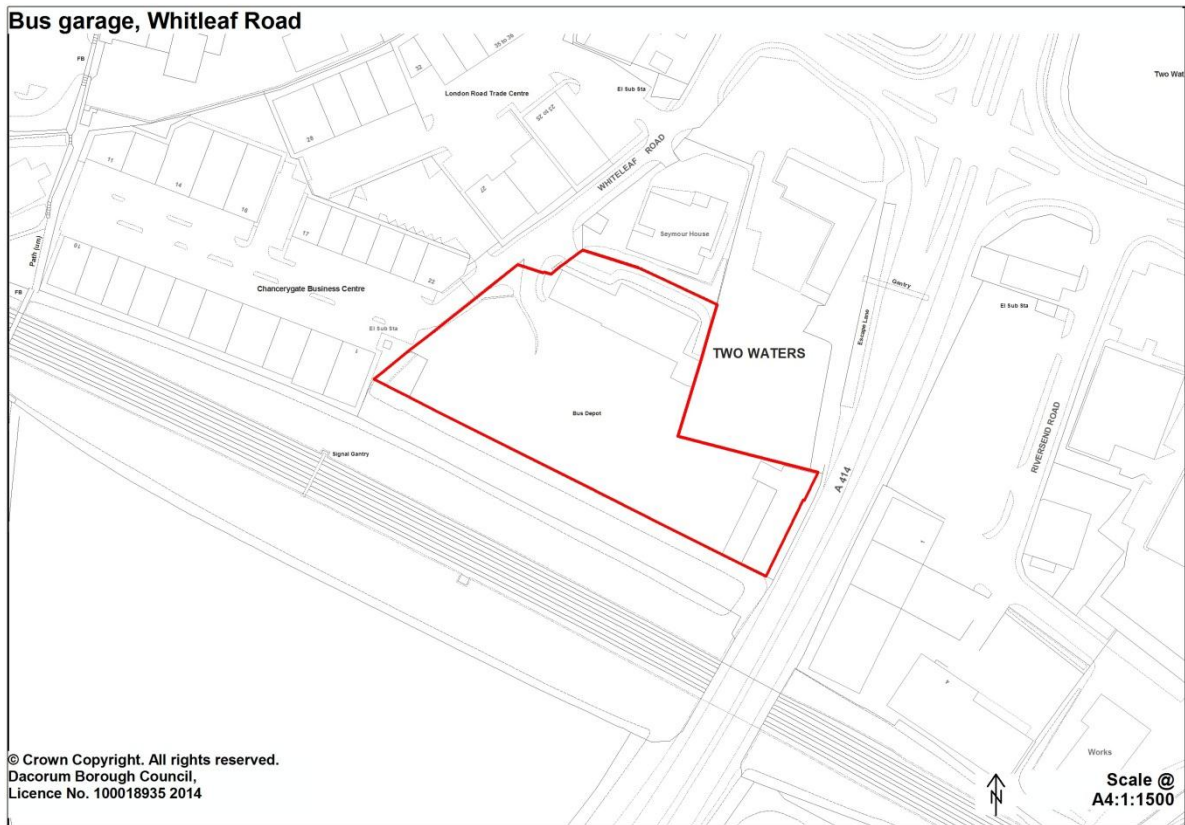
T/3 Hemel Hempstead Railway Station (Hemel Hempstead)



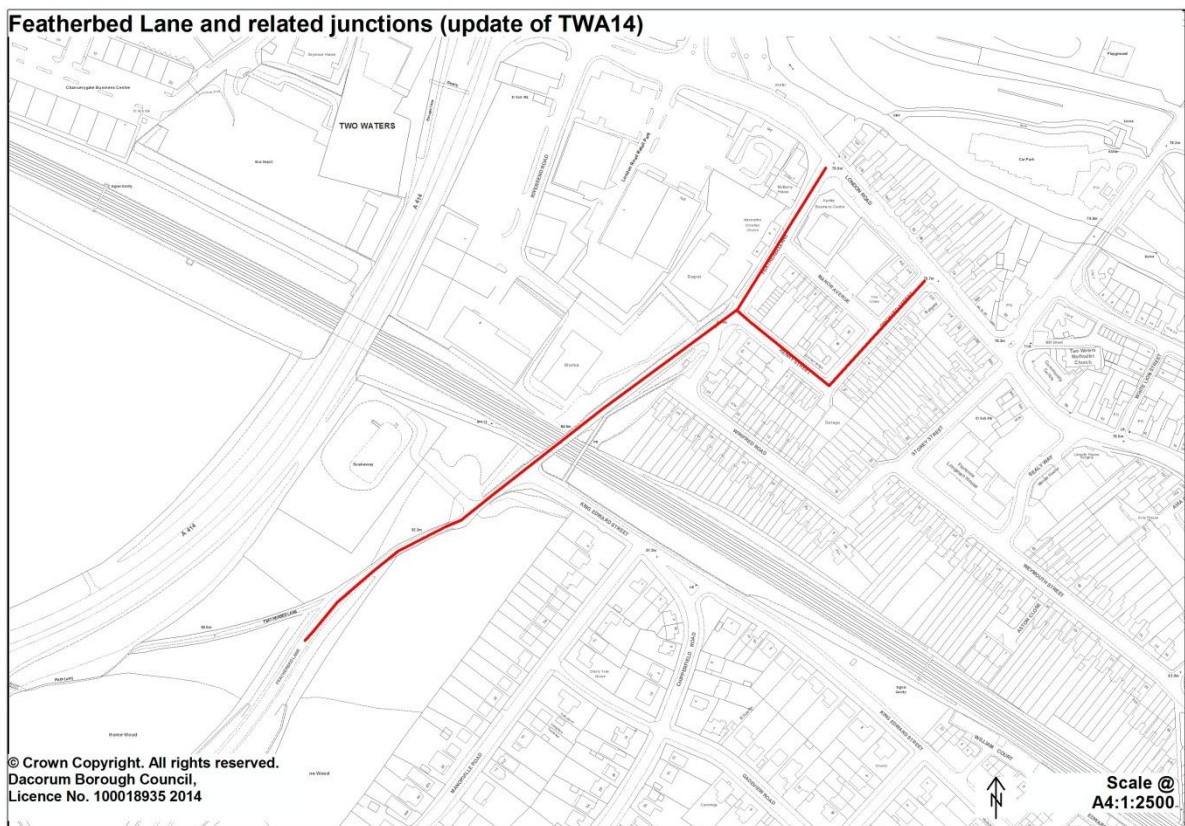
T/4 Apsley Railway Station (Hemel Hempstead)



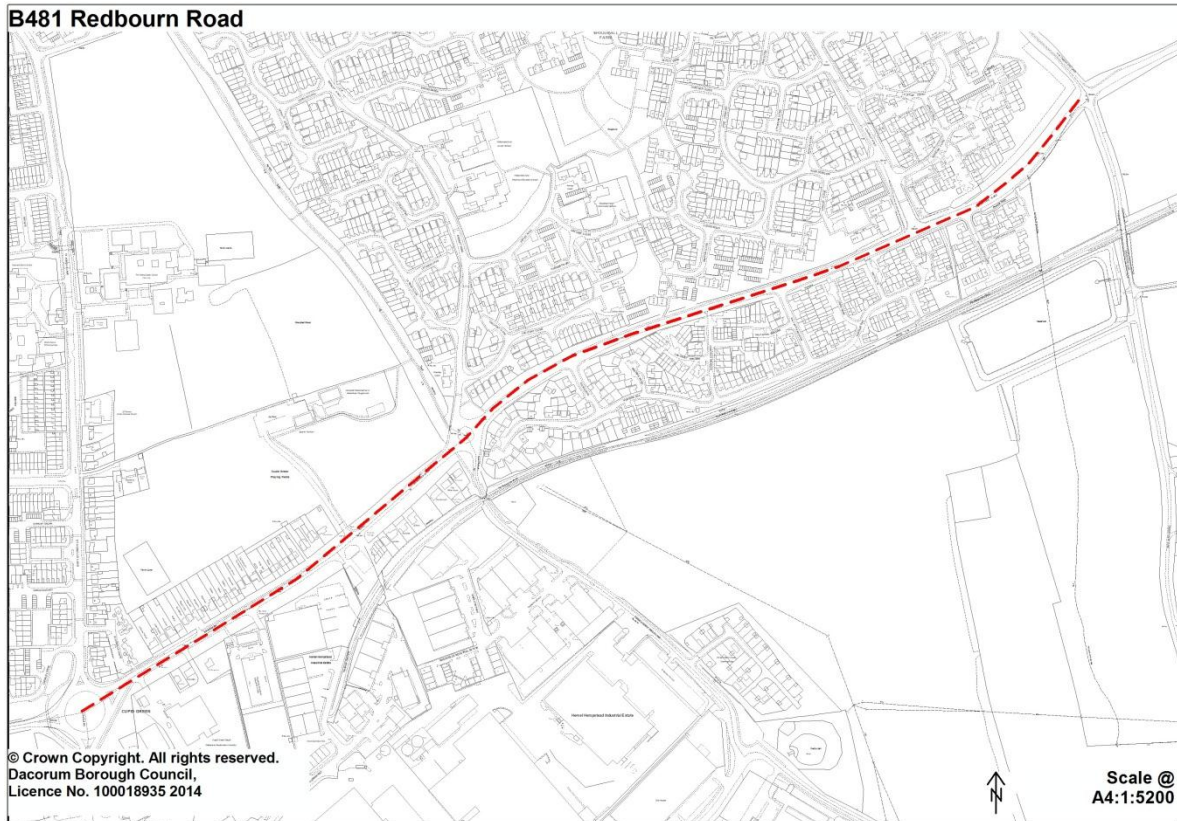
T/5 Bus garage, Whiteleaf Road (Hemel Hempstead)



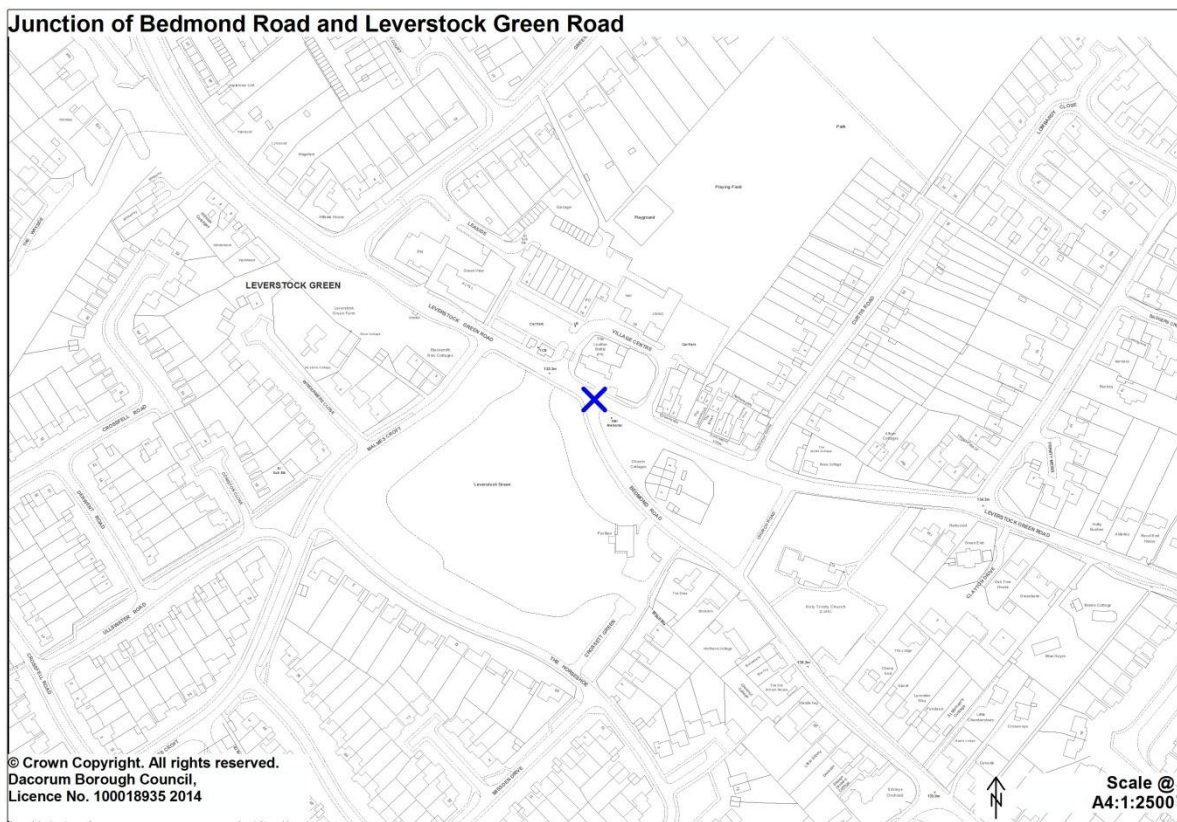
T/6 Featherbed Lane and related junctions (Hemel Hempstead)



T/7 B481 Redbourn Road (Hemel Hempstead)

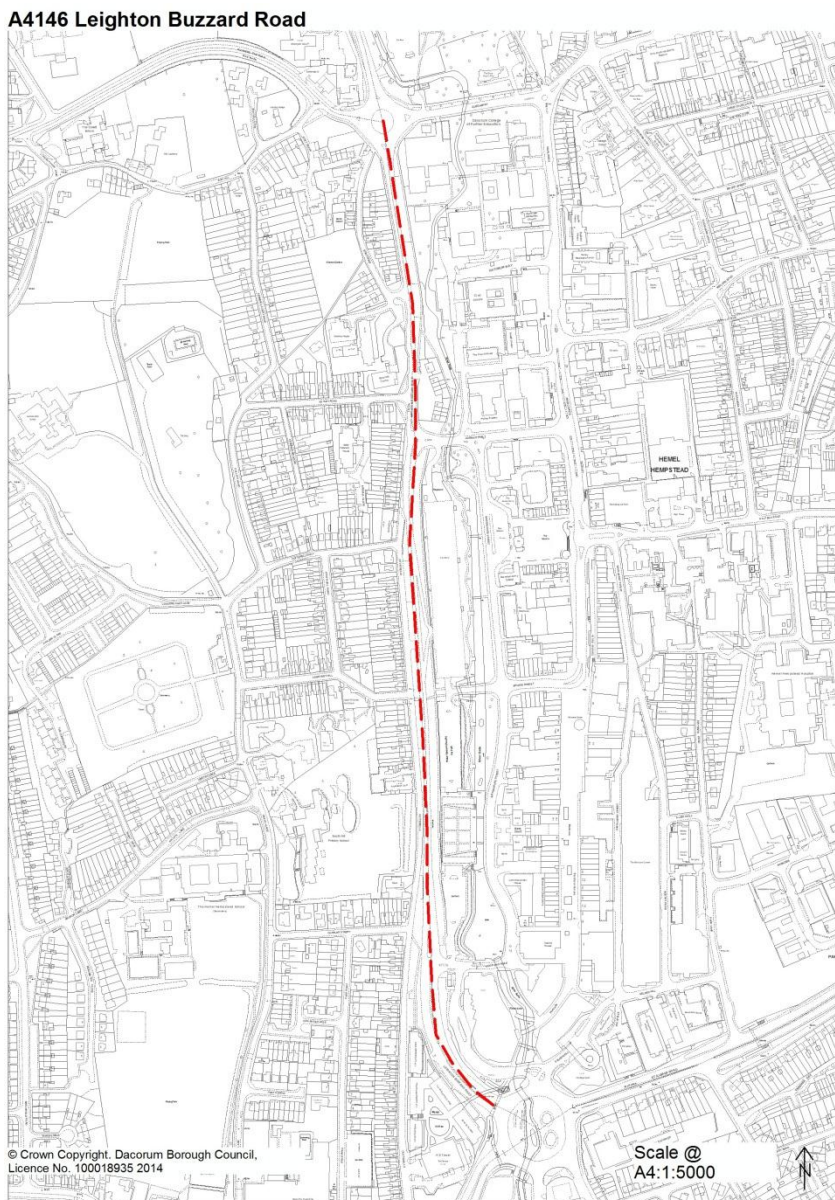


T/8 Junction of Bedmond Road and Leverstock Green Road (Hemel Hempstead)



T/9 A4146 Leighton Buzzard Road (Hemel Hempstead)

A4146 Leighton Buzzard Road

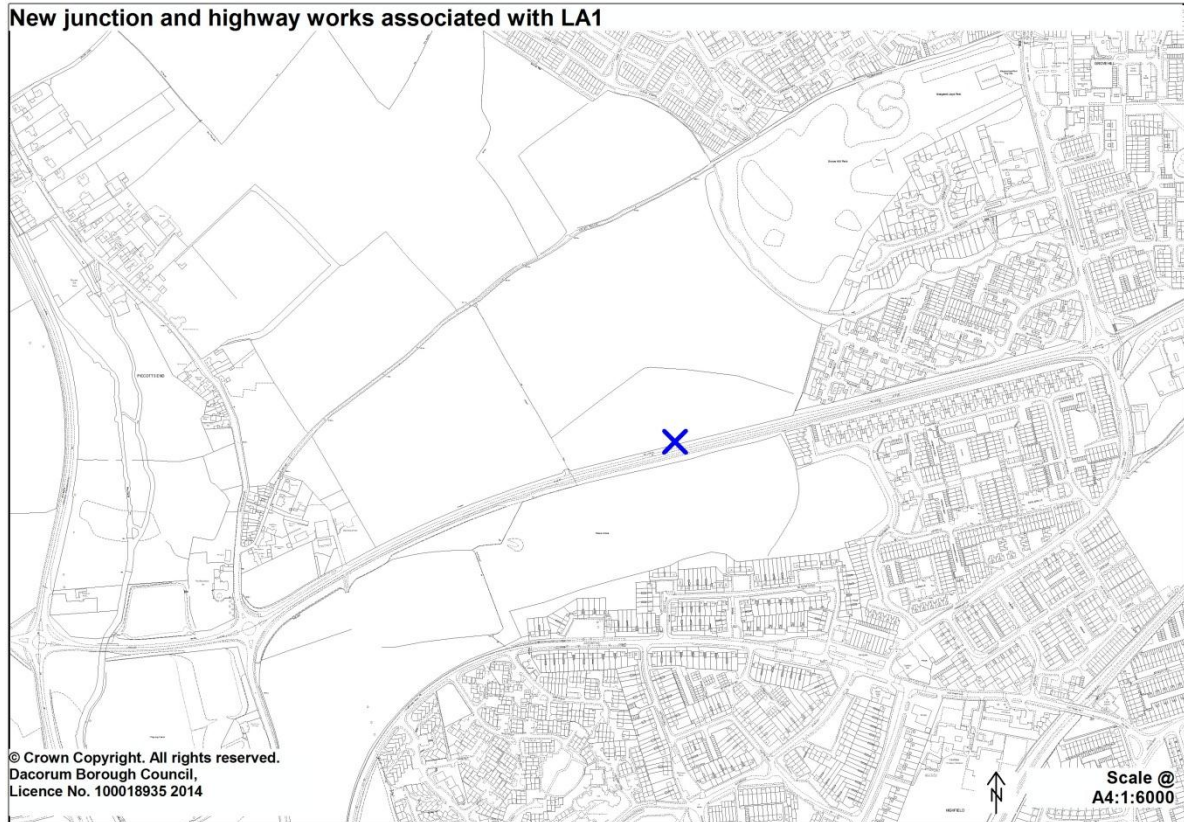


© Crown Copyright. Dacorum Borough Council,
Licence No. 100018935 2014

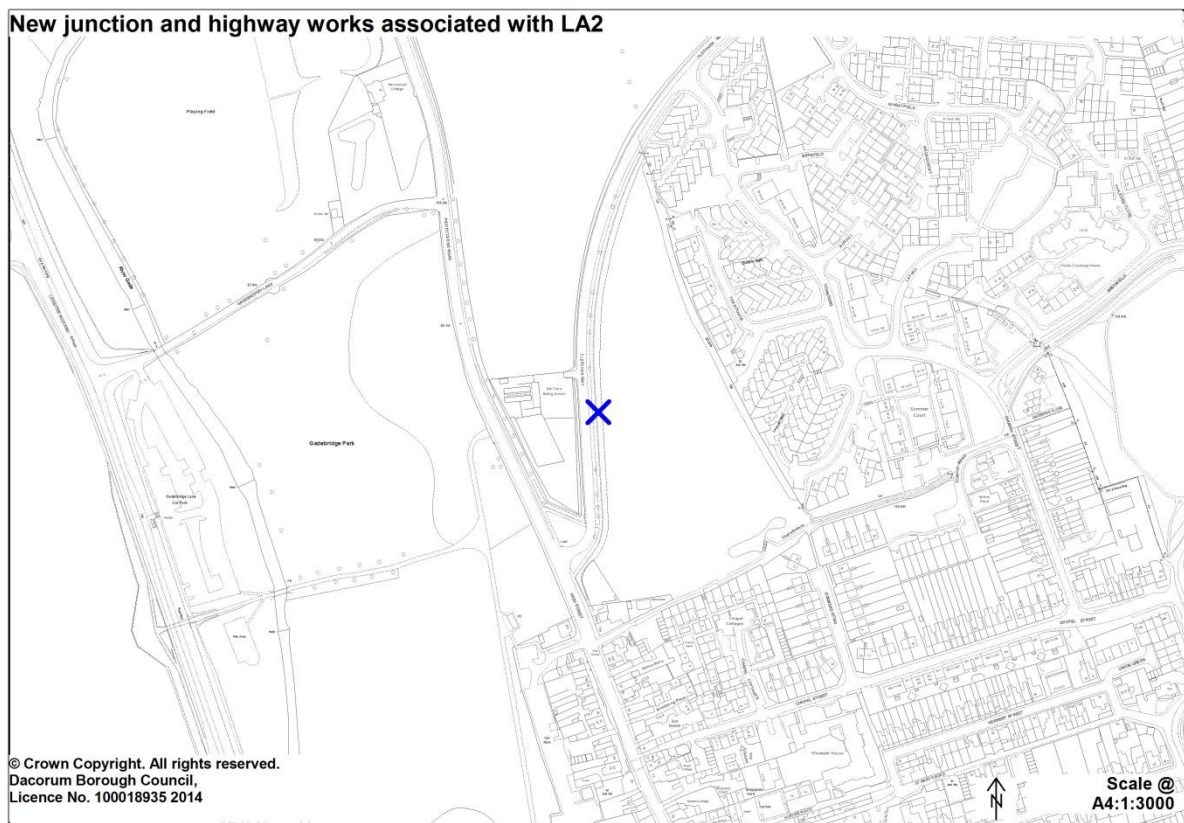
Scale @
A4:1:5000



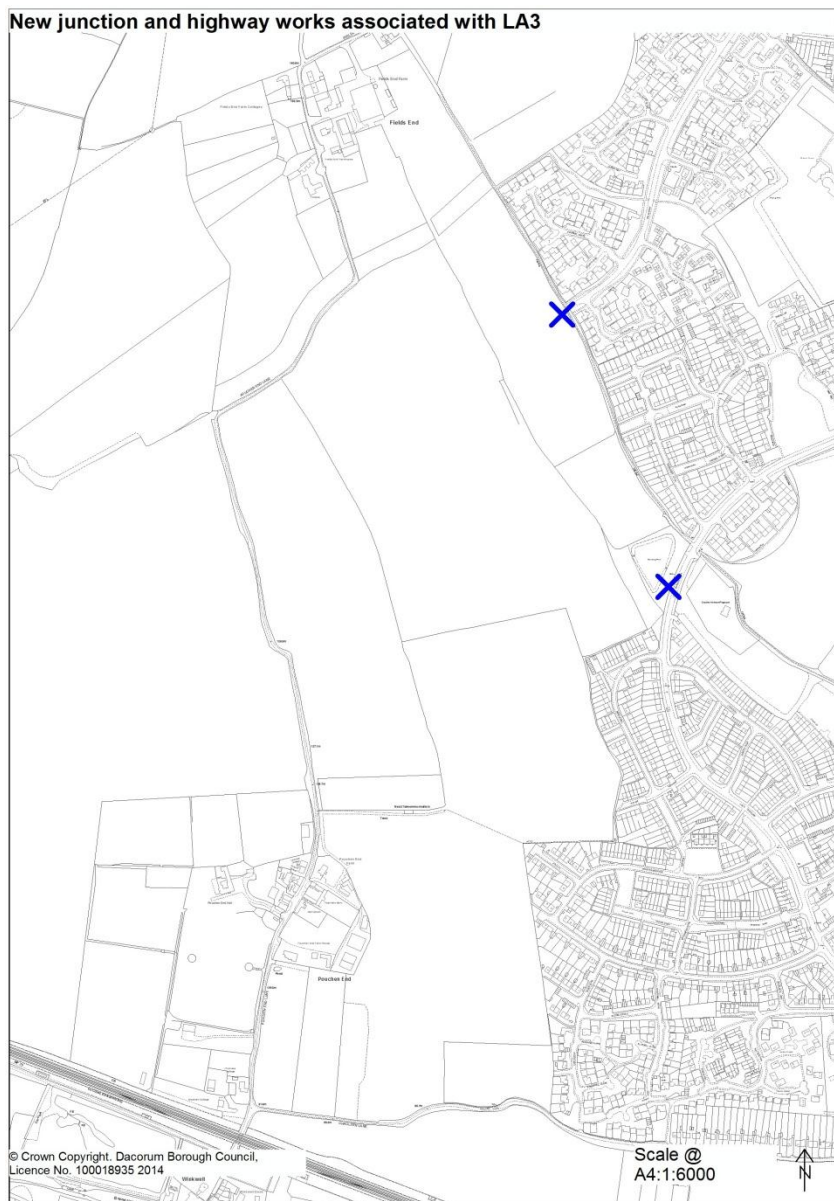
T/10 New junction and highway works associated with development at LA1 (Hemel Hempstead)



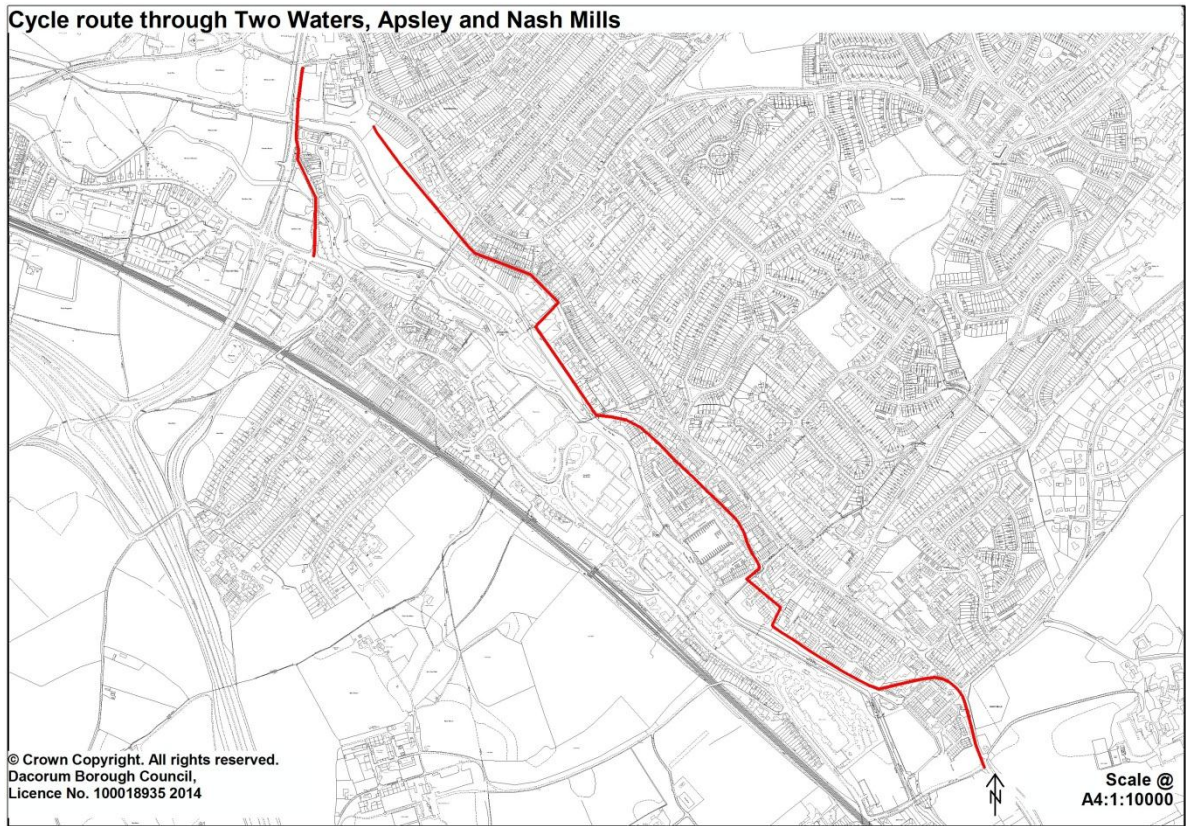
T/11 New junction and highway works associated with development at LA2 (Hemel Hempstead)



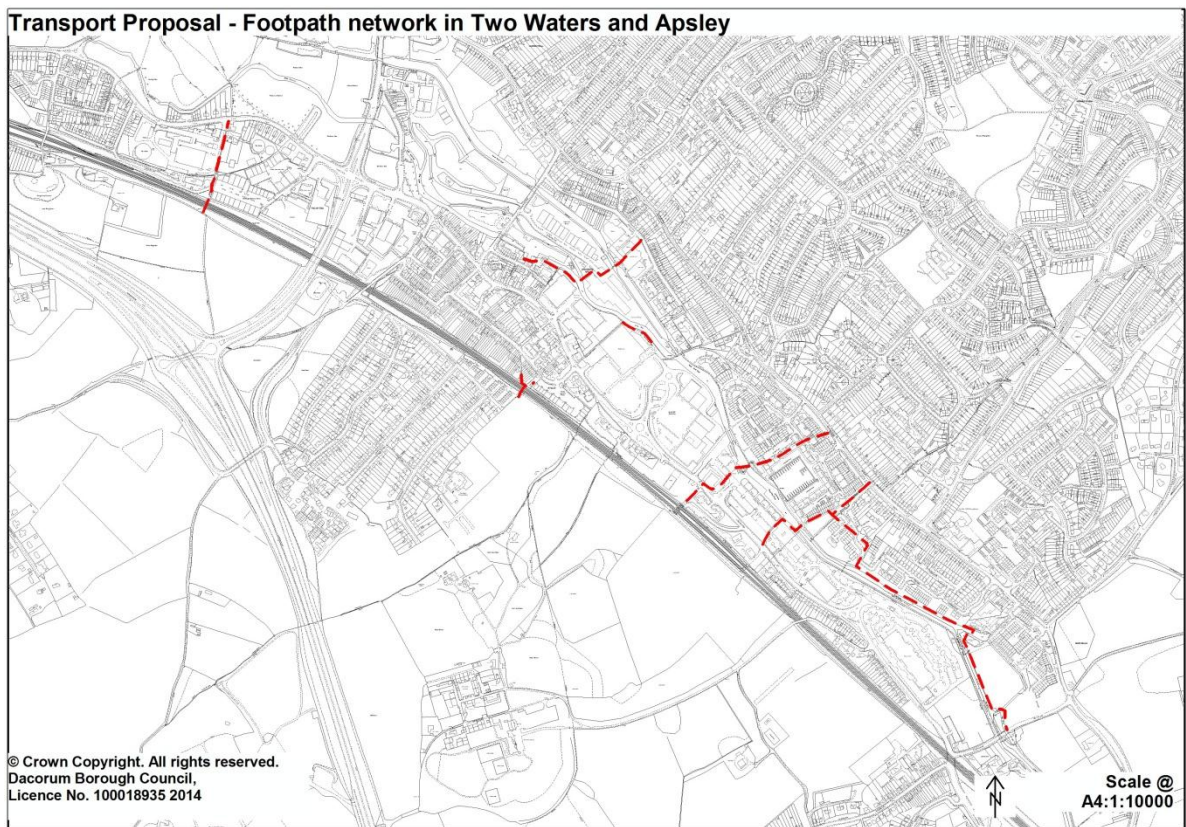
T/12 New junction and highway works associated with development at LA3 (Hemel Hempstead)



T/13 Cycle route through Two Waters, Apsley and Nash Mills (Hemel Hempstead)

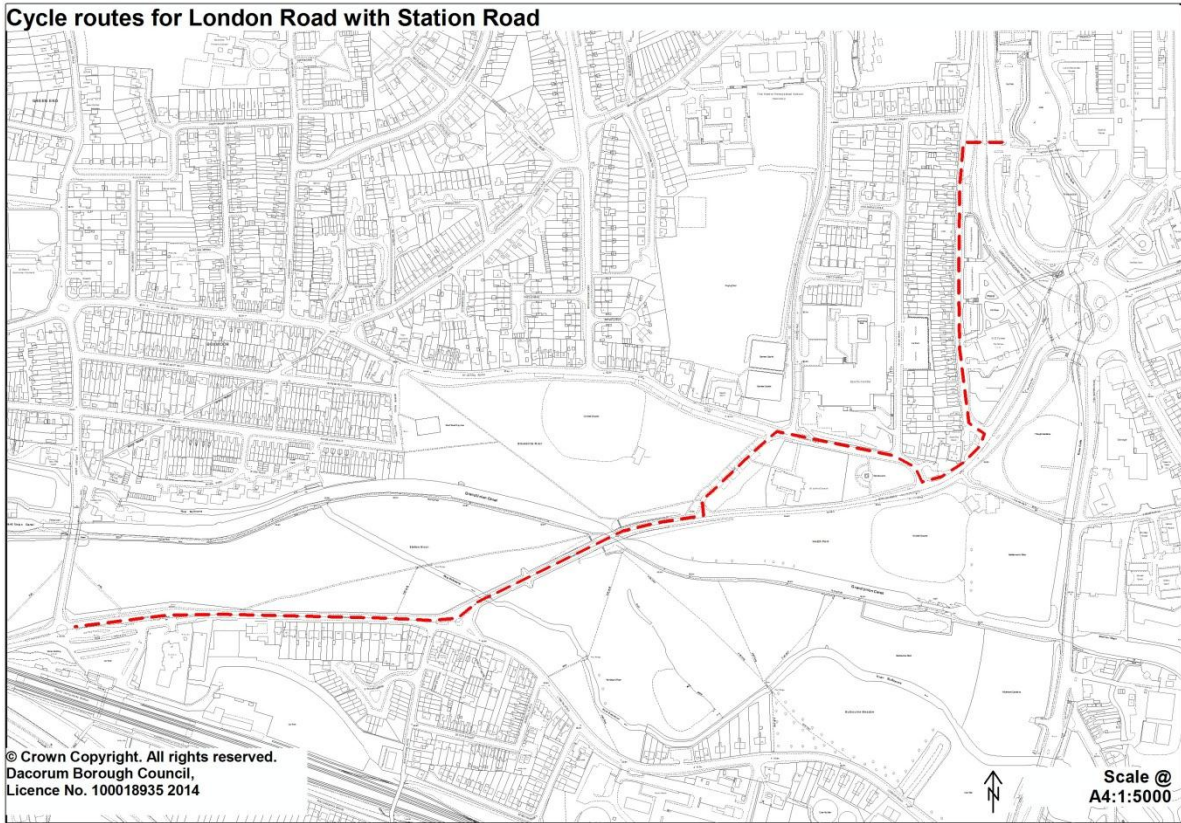


T/14 Footpath network in Two Waters and Apsley (Hemel Hempstead)



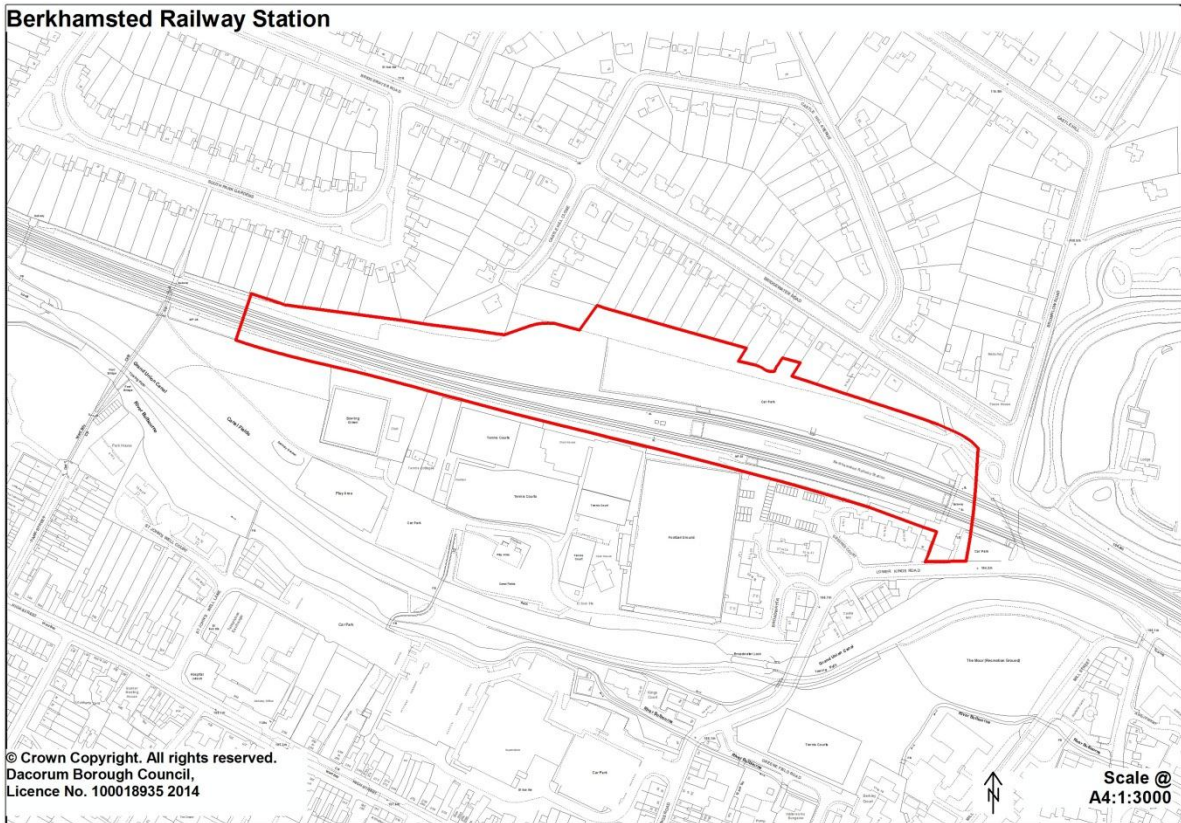
T/15 Cycle routes for London Road with Station Road (Hemel Hempstead)

Cycle routes for London Road with Station Road

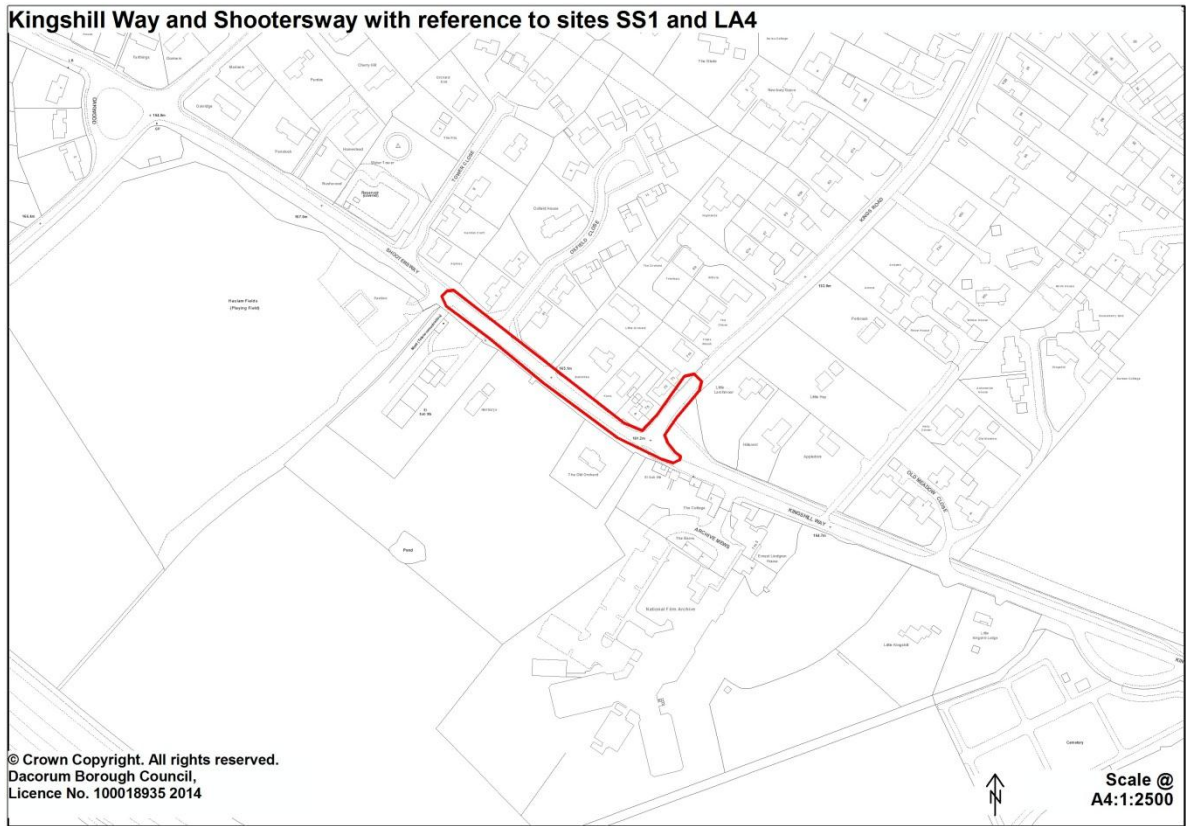


T/16 Berkhamsted Railway Station

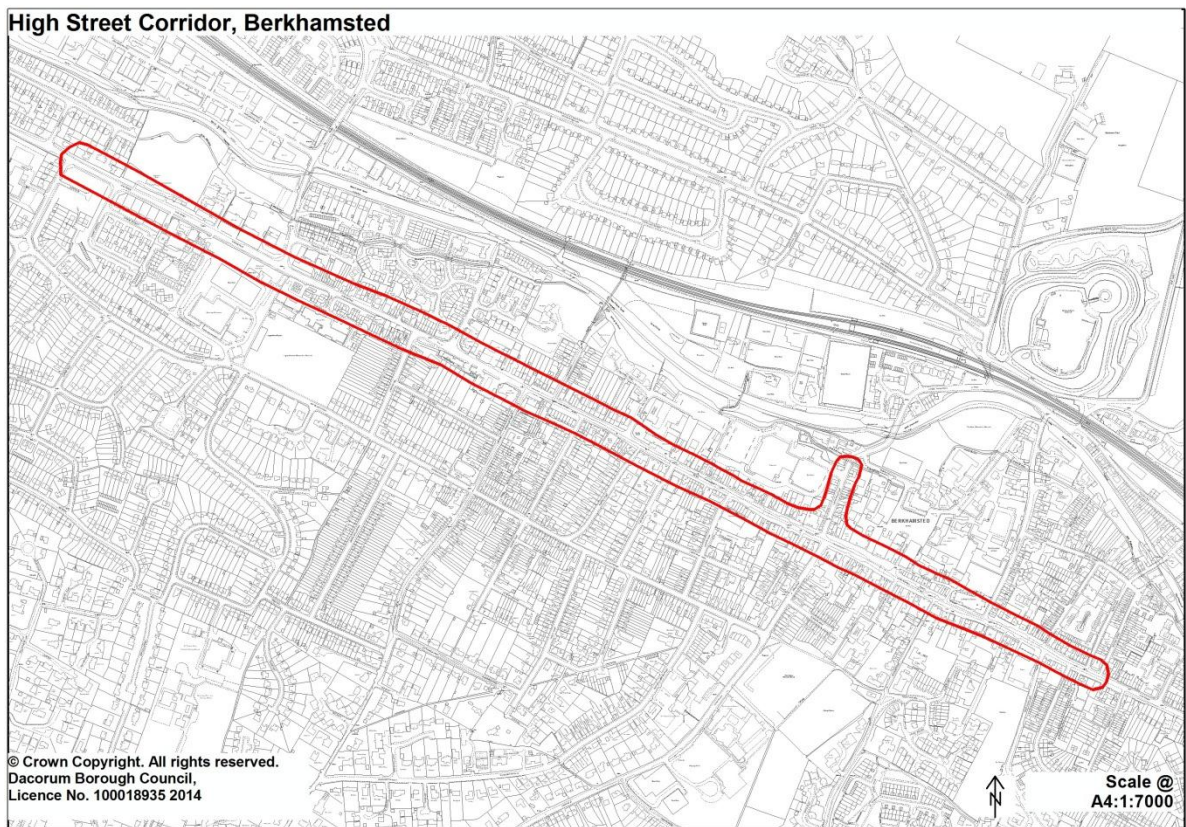
Berkhamsted Railway Station



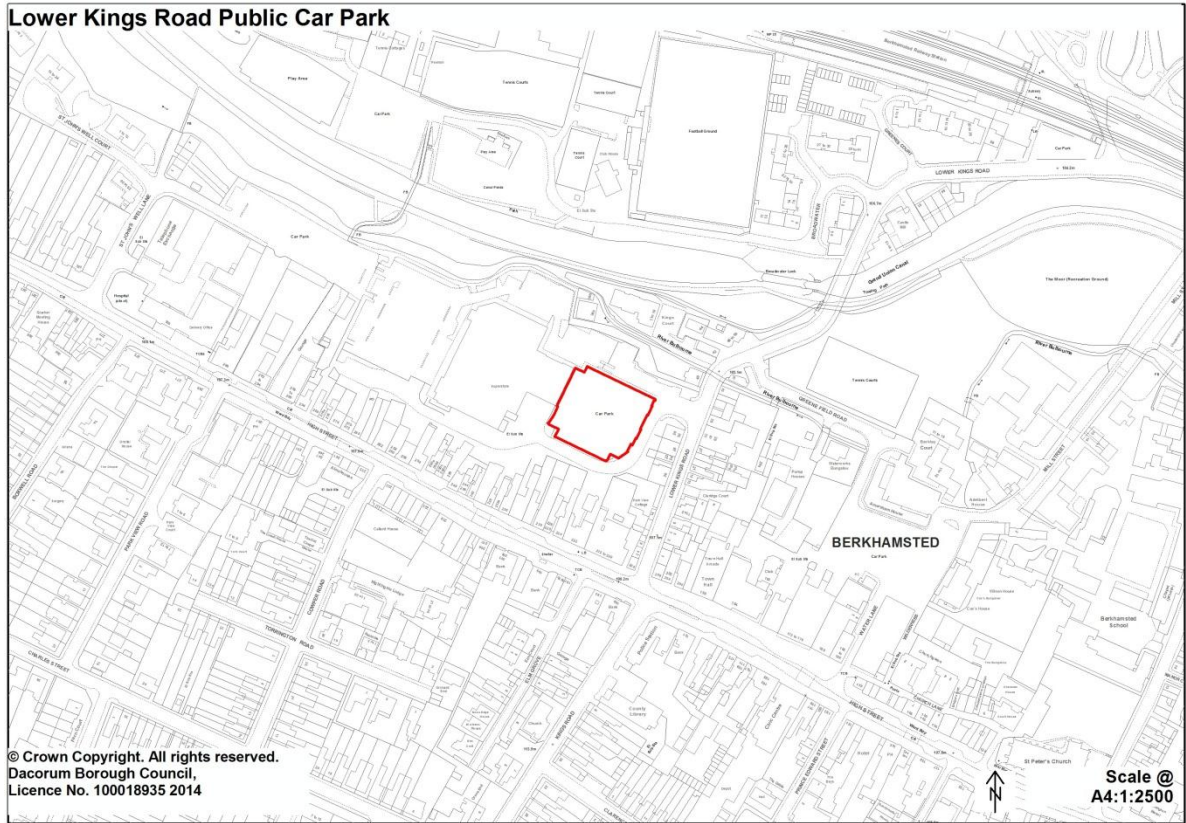
T/17 Kingshill Way and Shootersway with reference to Sites SS1 and LA4 (Berkhamsted)



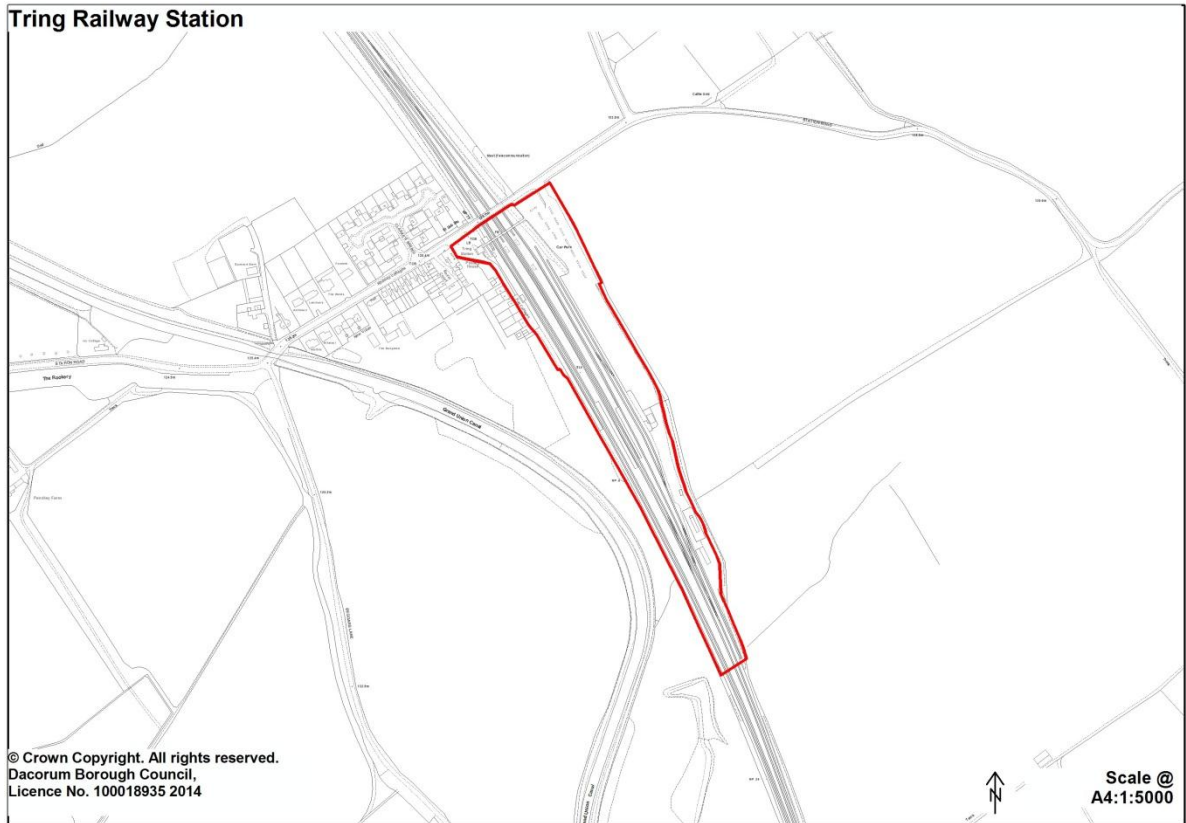
T/18 High Street Corridor (Berkhamsted)



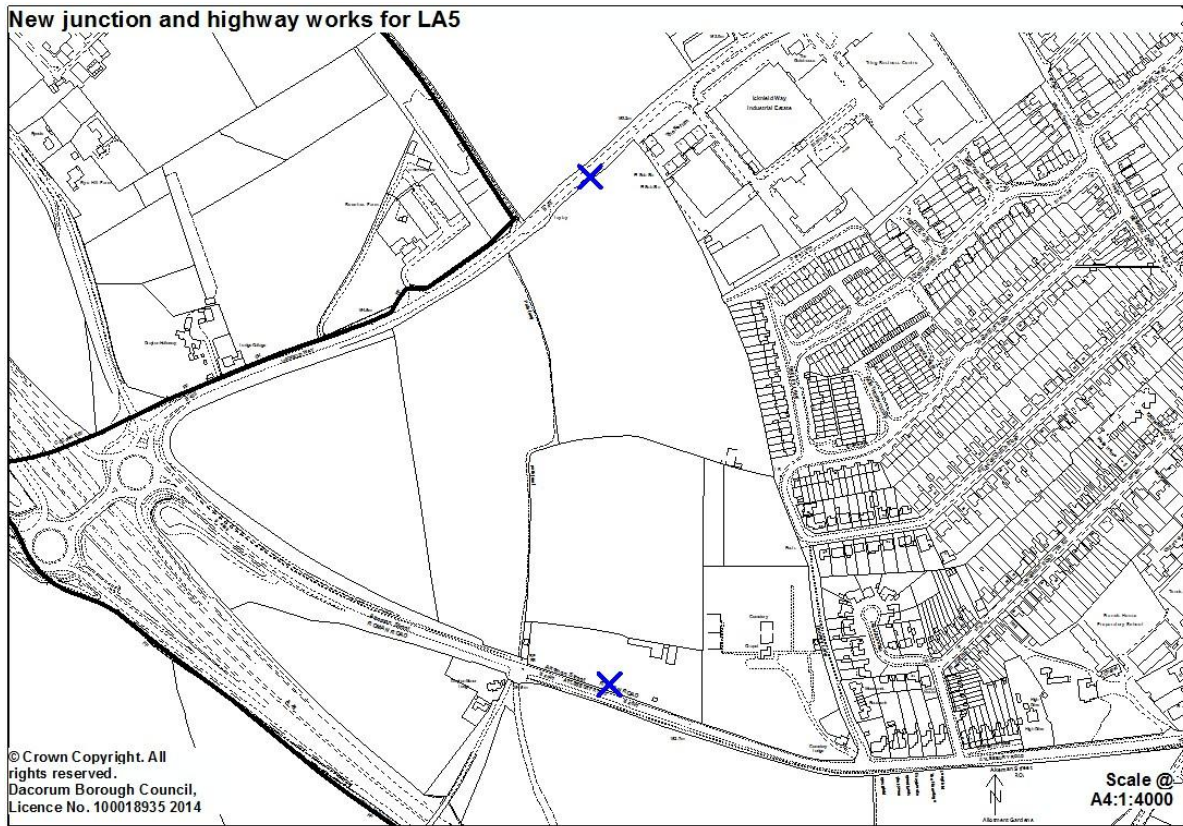
T/19 Lower Kings Road Public Car Park (Berkhamsted)



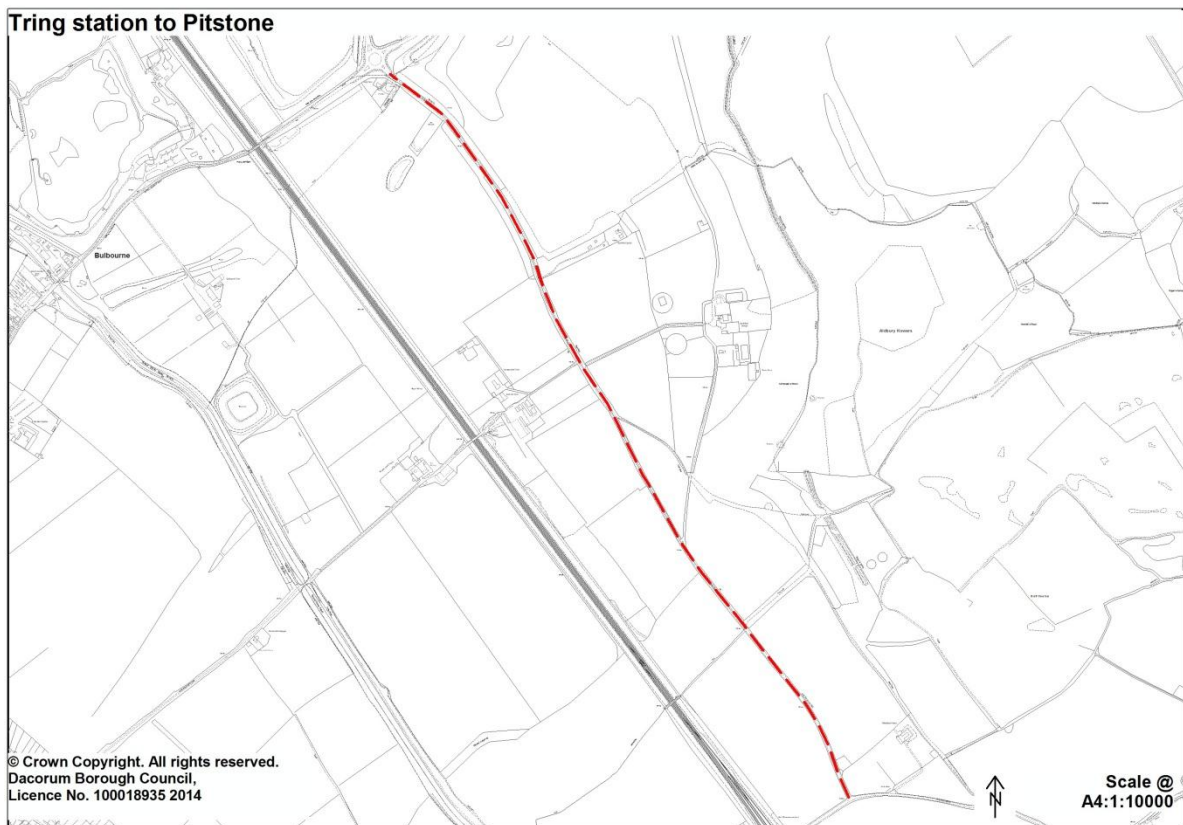
T/20 Tring Railway Station



T/21 New junction and highway works associated with development at LA5 (Tring)



T/22 Tring Station to Pitstone



T/23 New junction and highway works associated with development at LA6 (Bovingdon)

