
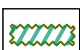
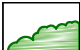
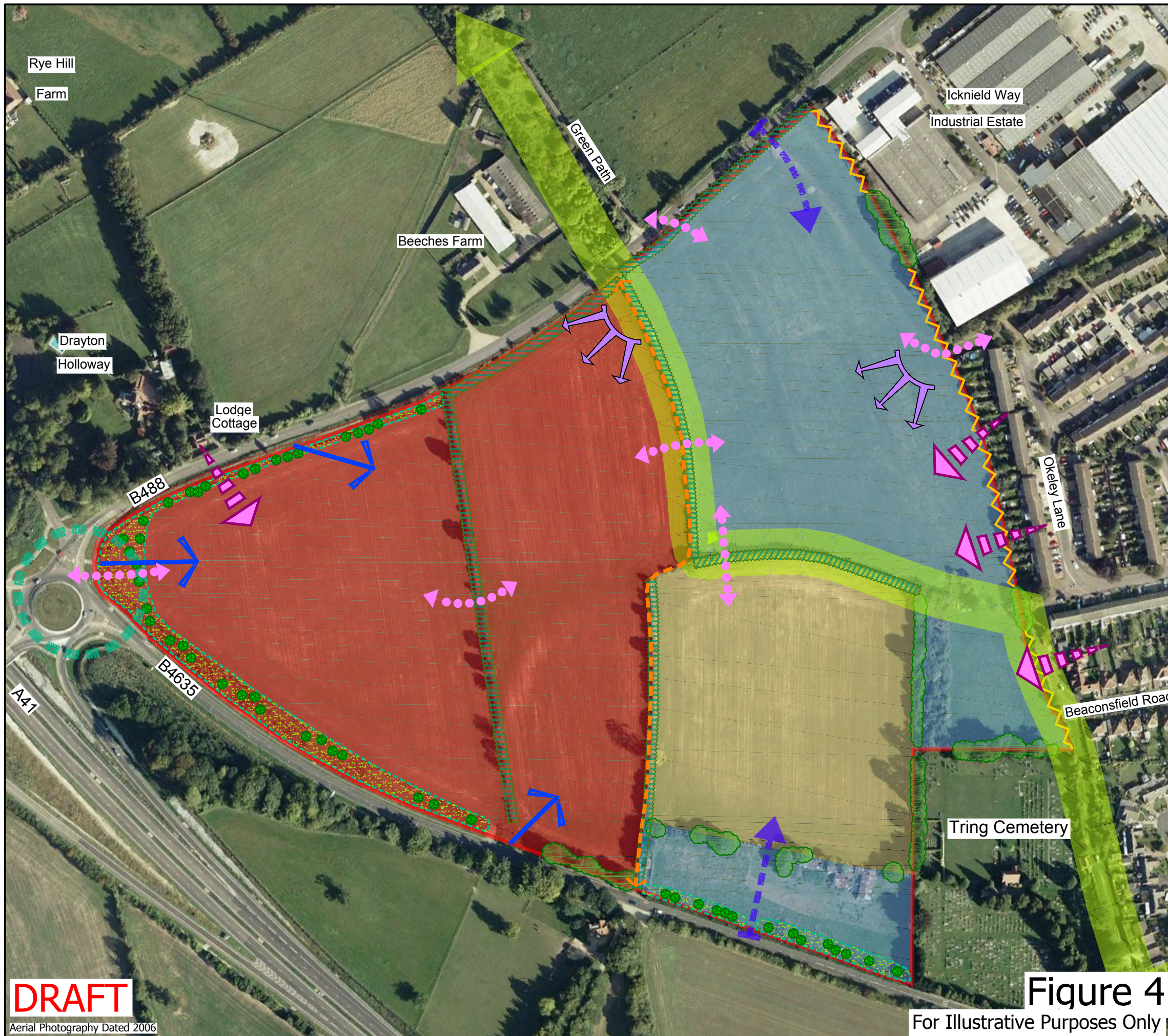
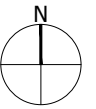


The scaling of this drawing cannot be assured

Revision _____ Date _____ Drn _____ Ckd _____

LEGEND

-  Site Boundary
- Landscape Character Sensitivity**
-  Low landscape character sensitivity
-  Medium landscape character sensitivity
-  High landscape character sensitivity
- Green Infrastructure Opportunities**
-  Urban wildlife corridor identified in Spatial Diagram of Tring Place Strategy
-  Green Gateway identified in Spatial Diagram of Tring Place Strategy
- Access Opportunities**
-  Potential vehicular access (subject to highways advice)
-  Existing Public Rights of Way
-  Potential links/improvements to existing Public Rights of Way network
- Visual Opportunities and Constraints**
-  Maintain views towards Chilterns escarpment
-  Open views into the site
-  Opportunities for key views across the AONB towards the urban edge
- Site Features**
-  Maintain and enhance existing good condition landscape features
-  Enhance poor to moderate condition landscape features with native planting
-  Retain existing individual trees and tree belts
-  Opportunities to improve existing urban edge

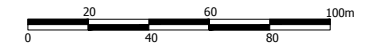


Project
Land West of Tring

Drawing Title
Landscape Development Principles Plan

Date	Scale	Drawn by	Check by
06.08.2012	1:2,500@A3	MK	CRH

Project No	Drawing No	Revision
21156	L4	A



DRAFT

Aerial Photography Dated 2006

Figure 4

For Illustrative Purposes Only

BARTON WILLMORE

Planning • Master Planning & Urban Design
Architecture • Landscape Planning & Design • Project Services
Environmental & Sustainability Assessment • Graphic Design

bartonwillmore.co.uk



Offices at Reading London Bristol Cambridge Cardiff Ebbsfleet Edinburgh Leeds Manchester Solihull