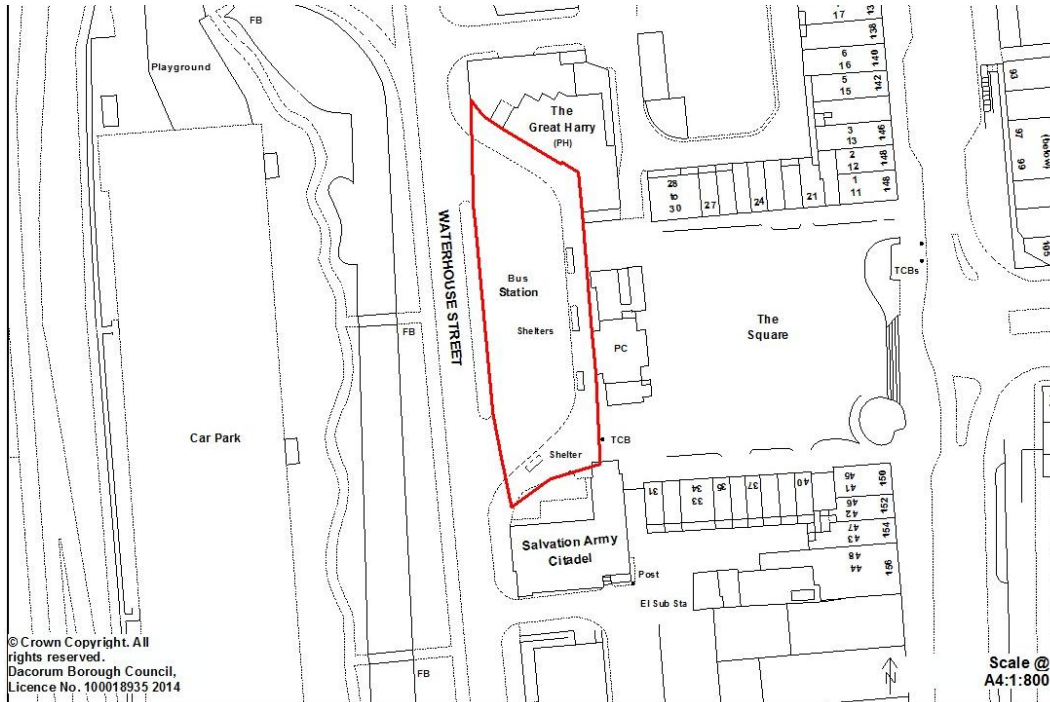


### 3. Enabling Convenient Access between Homes, Jobs and Facilities

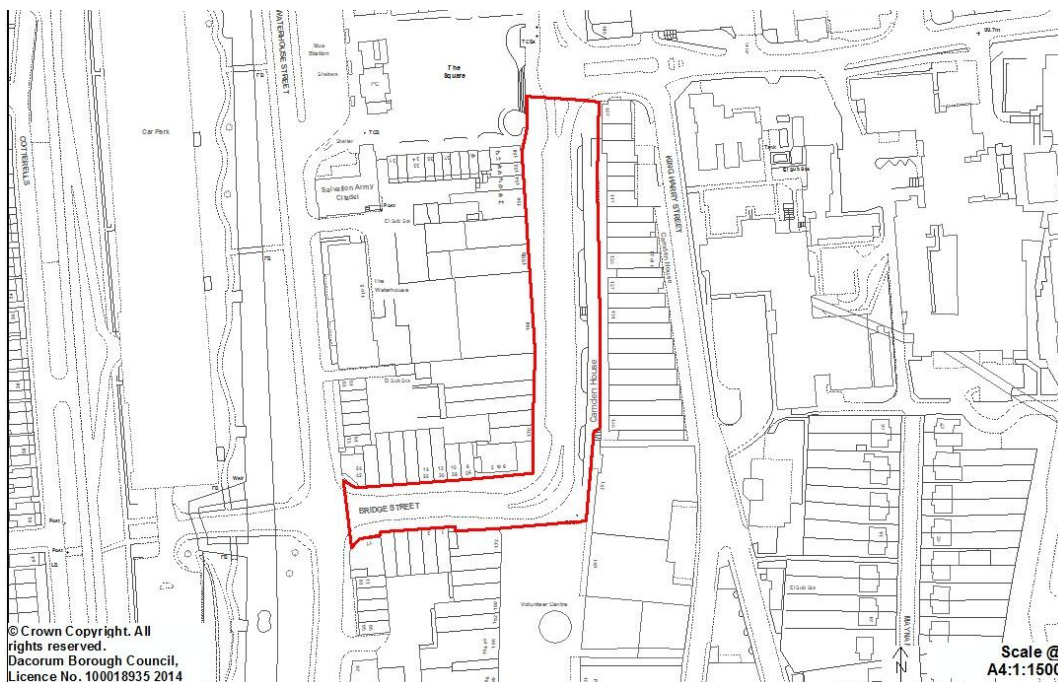
#### Transport Sites and Proposals

Note – The Schedule of Transport Proposals Sites and Schemes in the Local Plan 2004 will be superseded by the proposals below, with the exception of the East Hemel Hempstead AAP area.

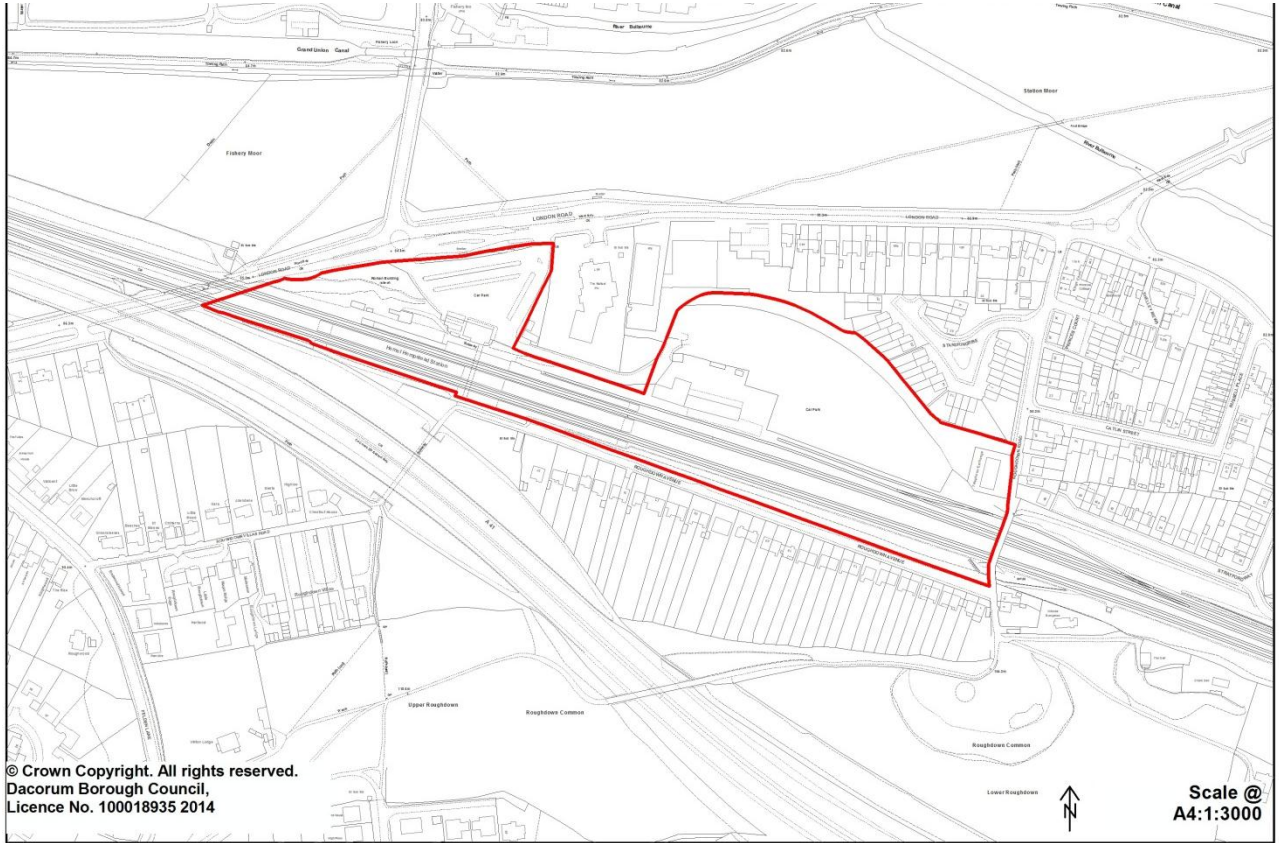
#### T/1 Existing bus interchange facilities



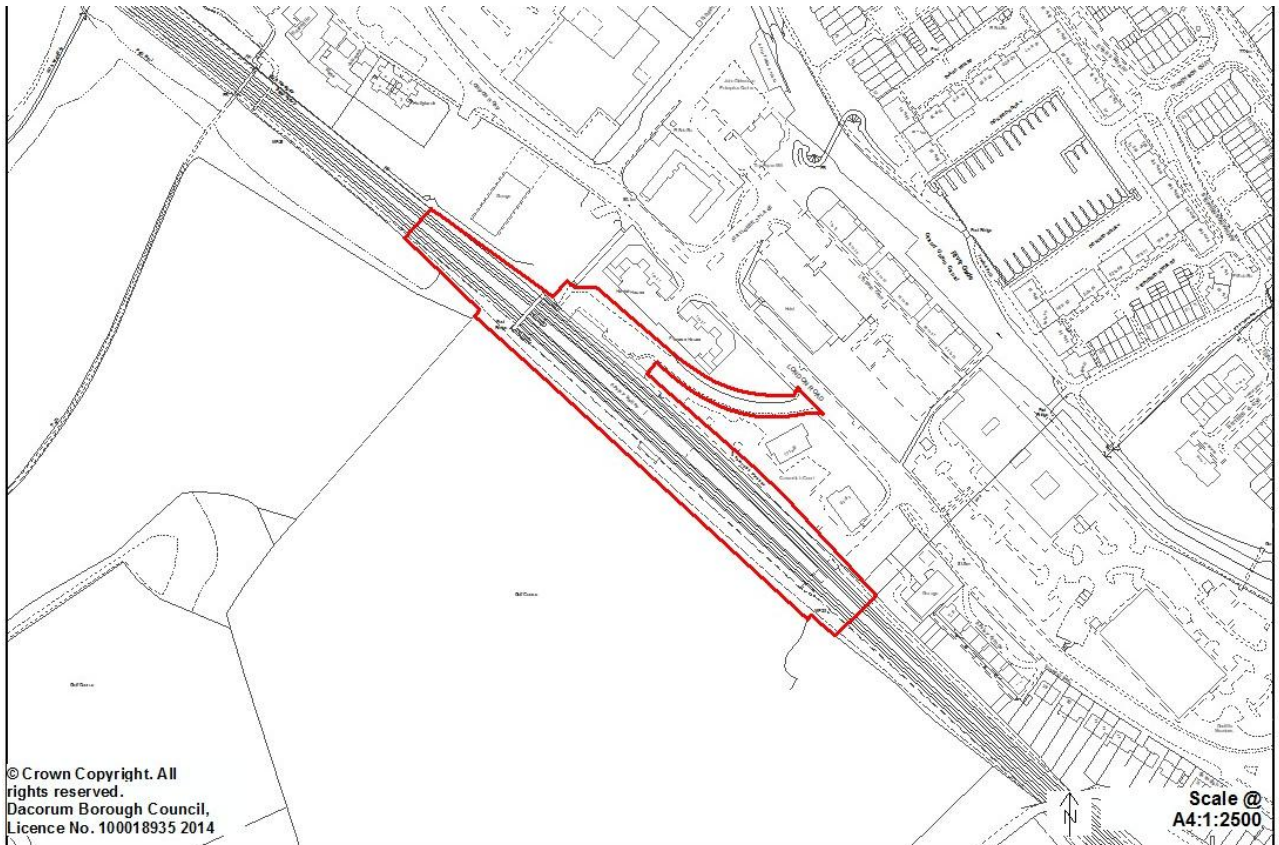
#### T/2 Replacement bus interchange facilities



### T/3 Hemel Hempstead Railway Station



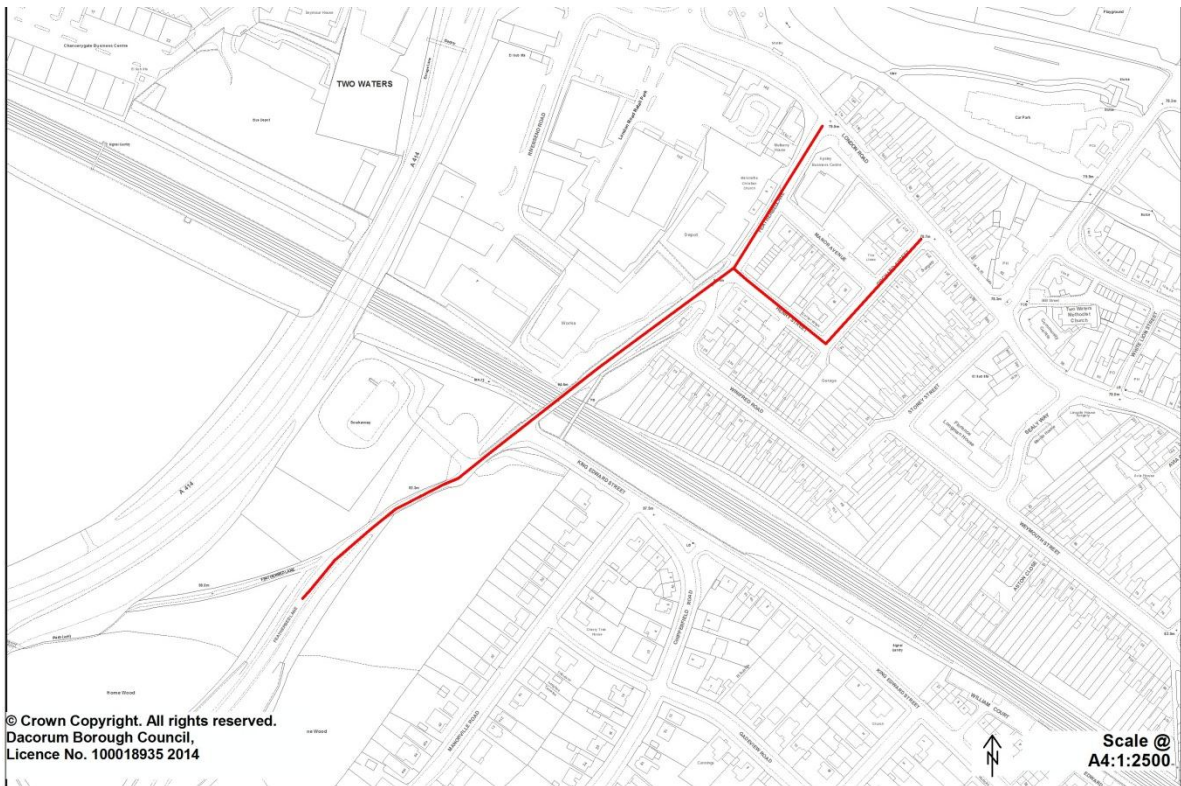
### T/4 Apsley Railway Station



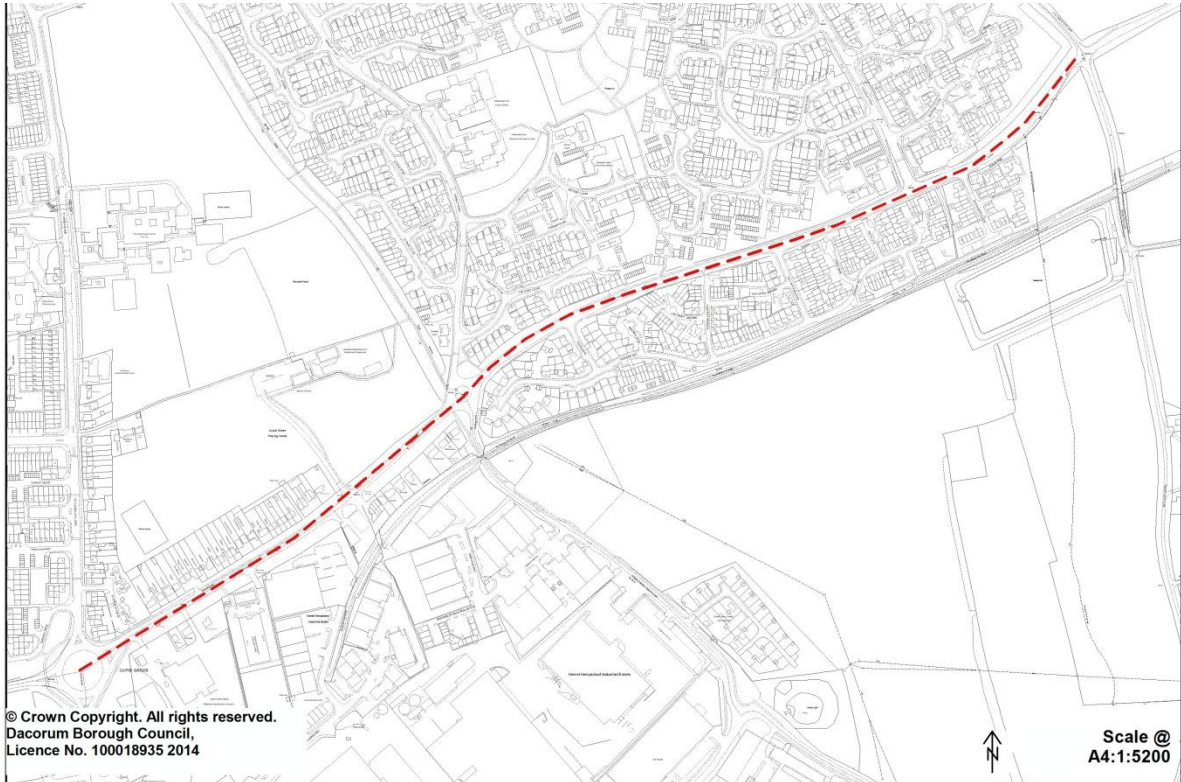
### T/5 Bus garage, Whiteleaf Road



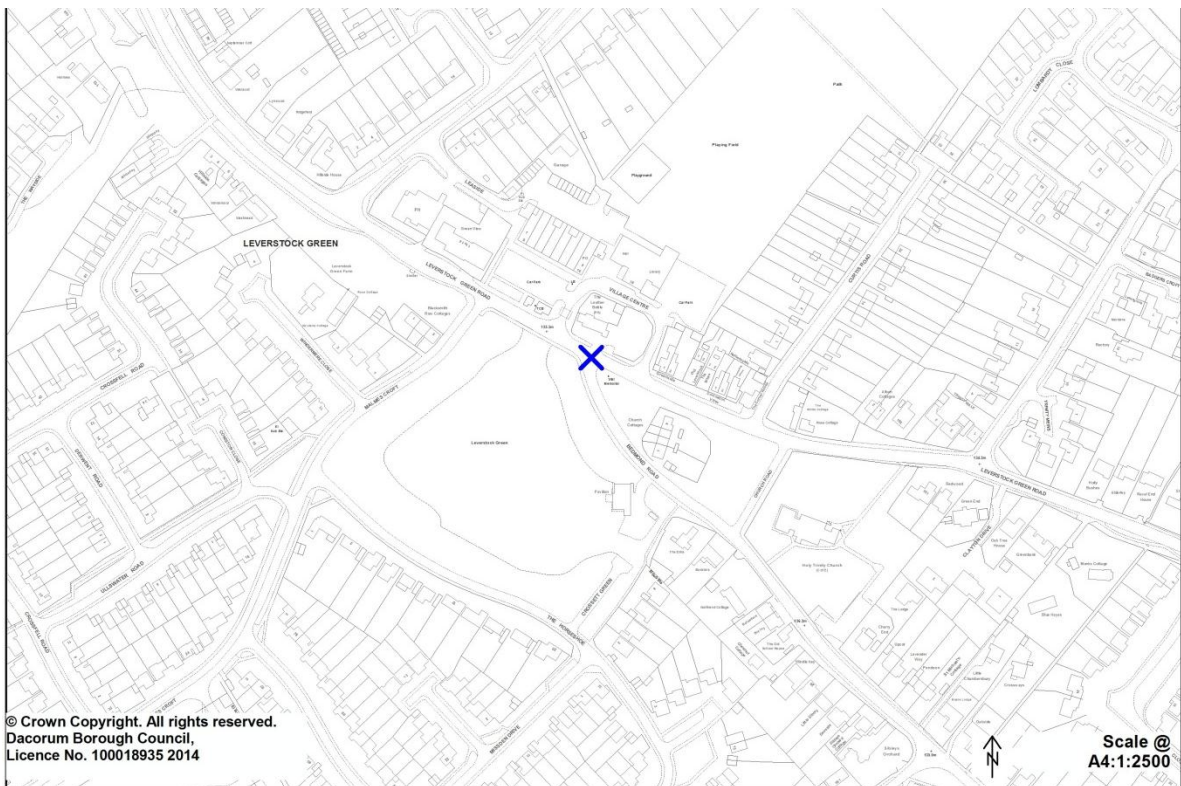
### T/6 Featherbed Lane and related junctions



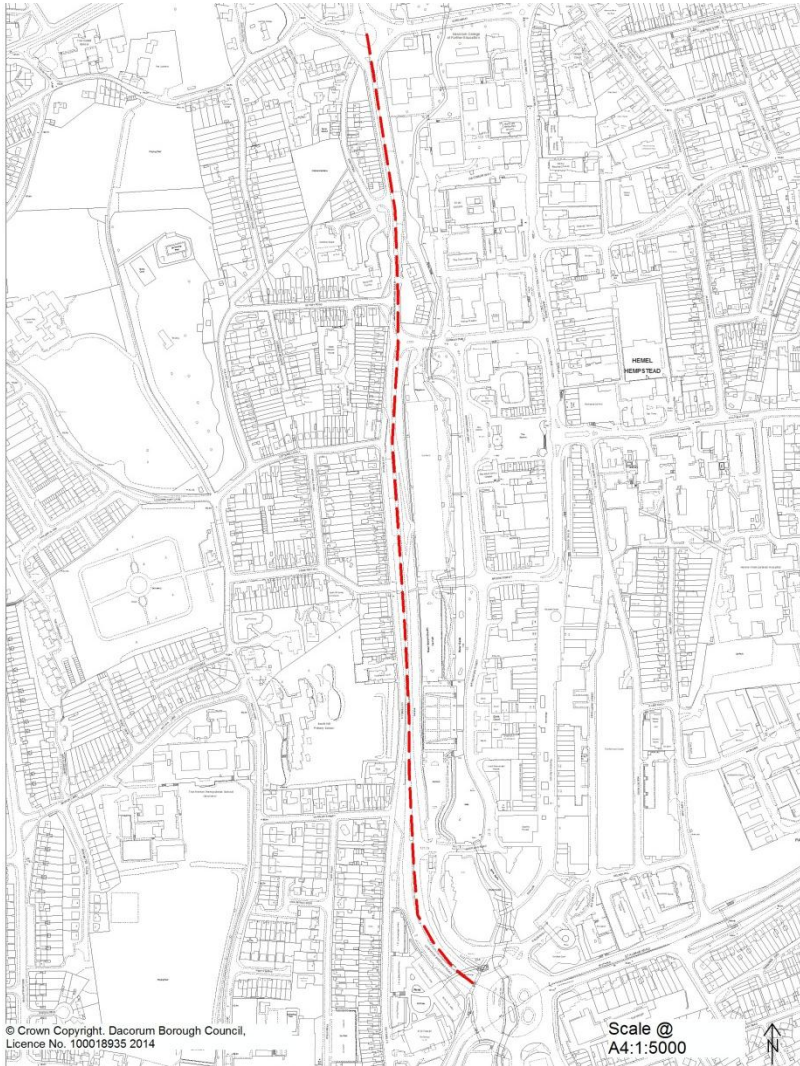
### T/7 B481 Redbourn Road



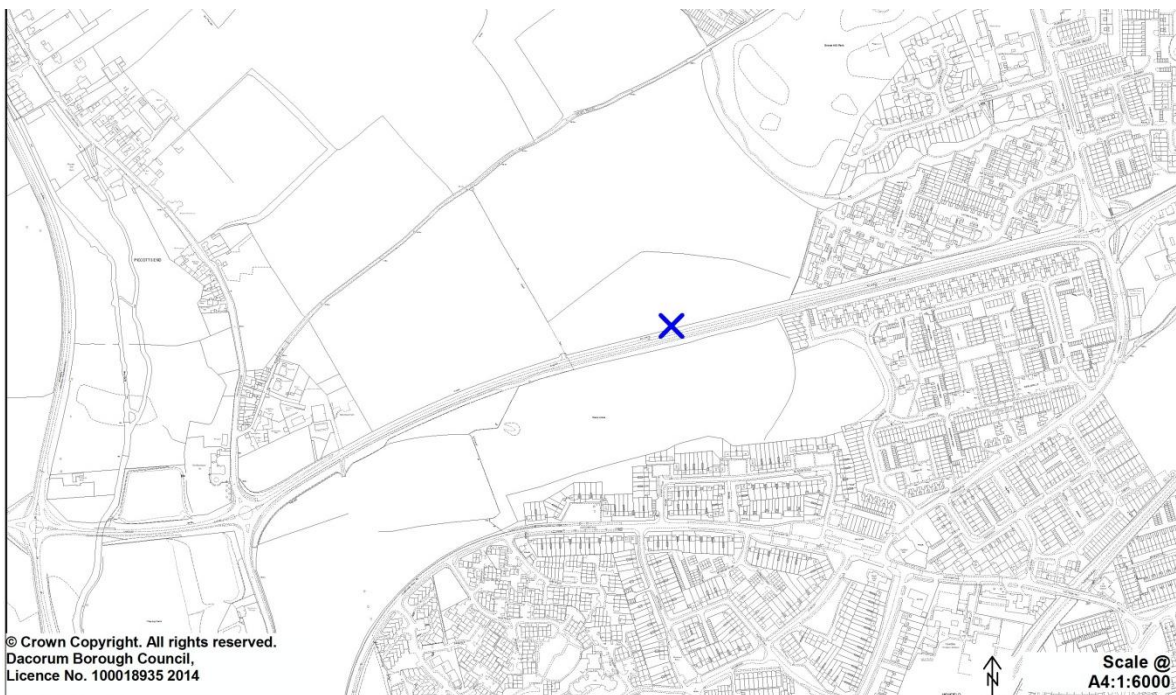
### T/8 Junction of Bedmond Road and Leverstock Green Road



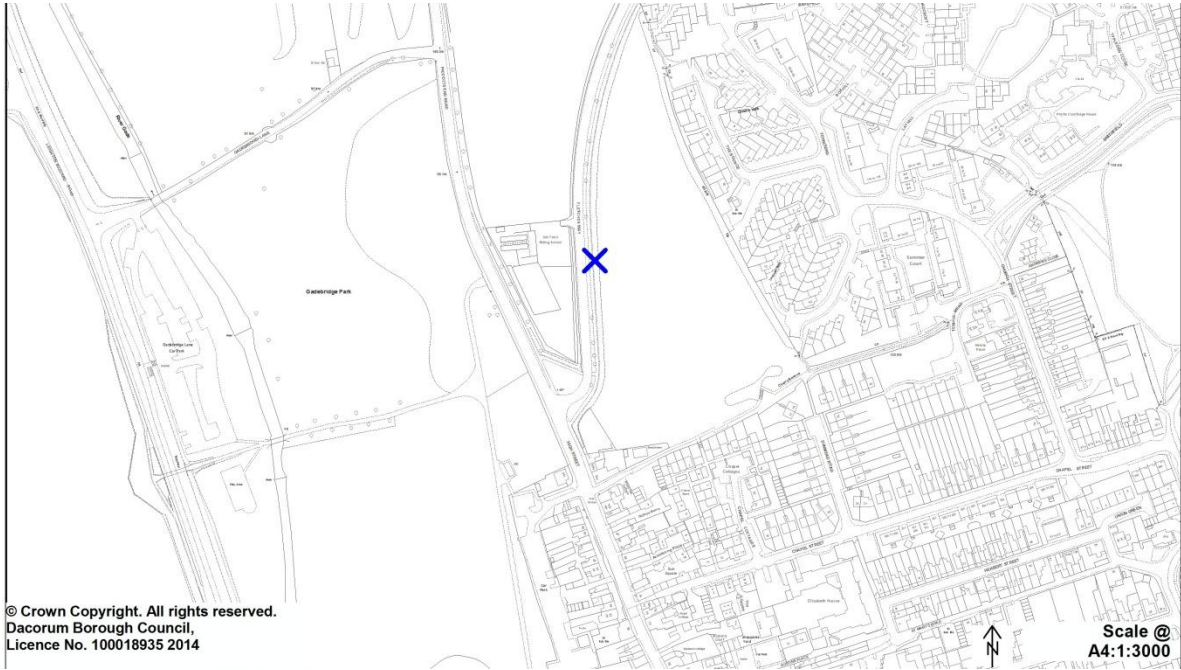
### T/9 A4146 Leighton Buzzard Road



### T/10 New junction and highway works associated with development at LA1



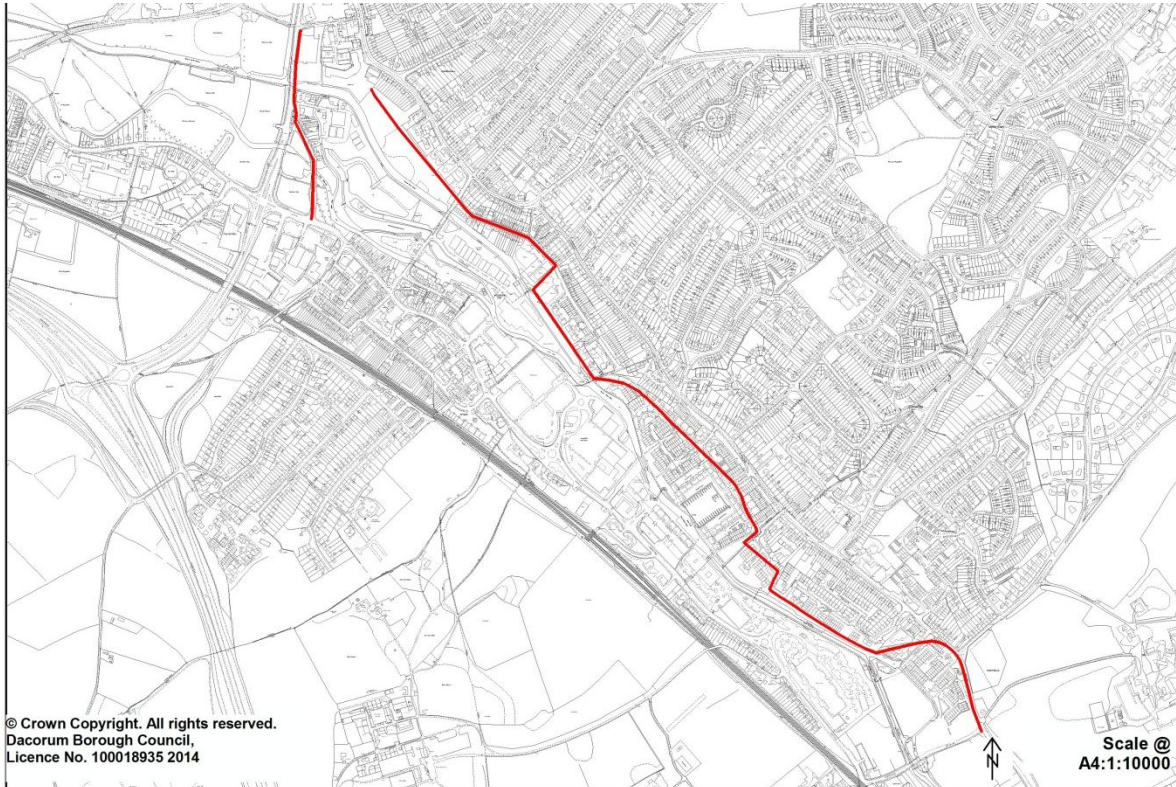
### T/11 New junction and highway works associated with development at LA2



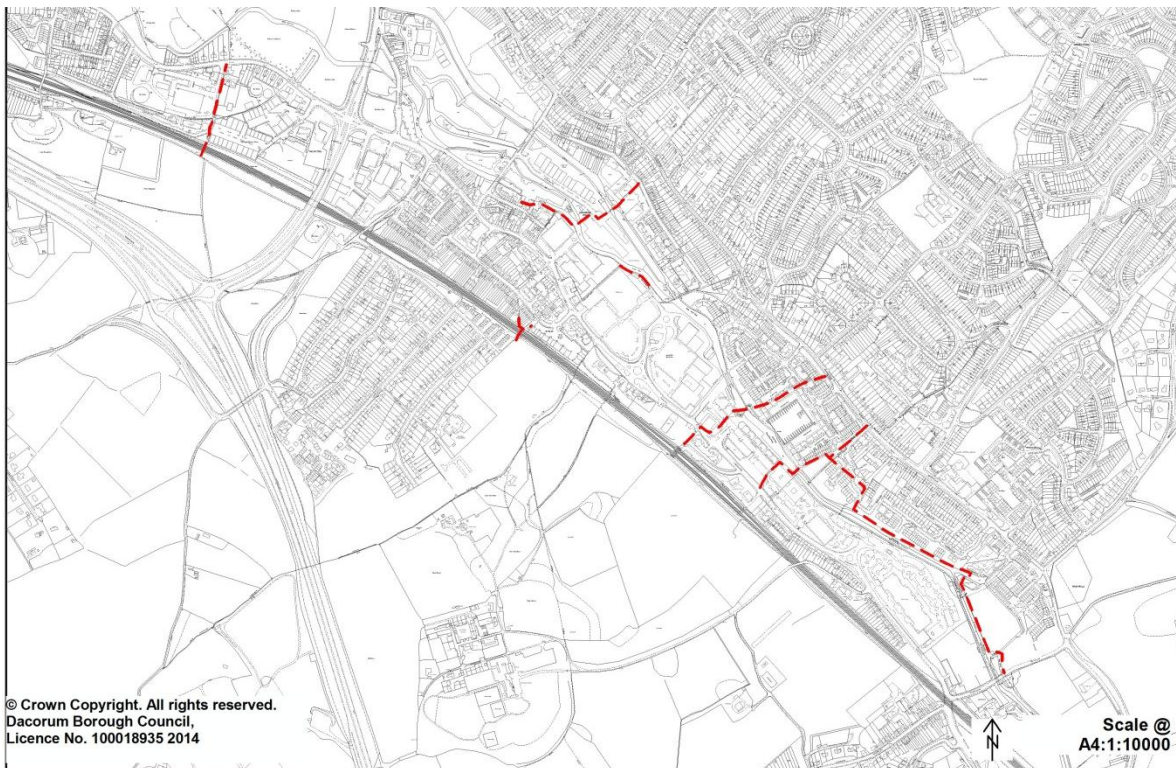
### T/12 New junction and highway works associated with development at LA3



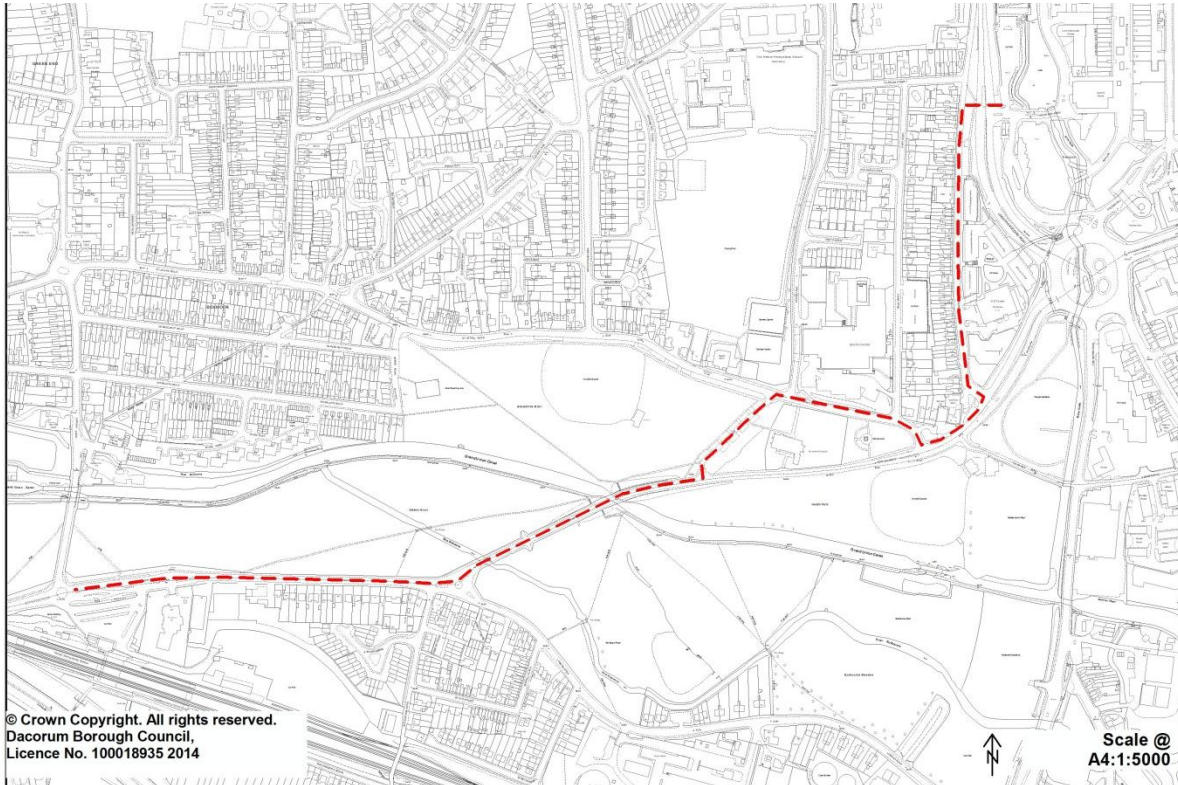
### T/13 Cycle route through Two Waters, Apsley and Nash Mills



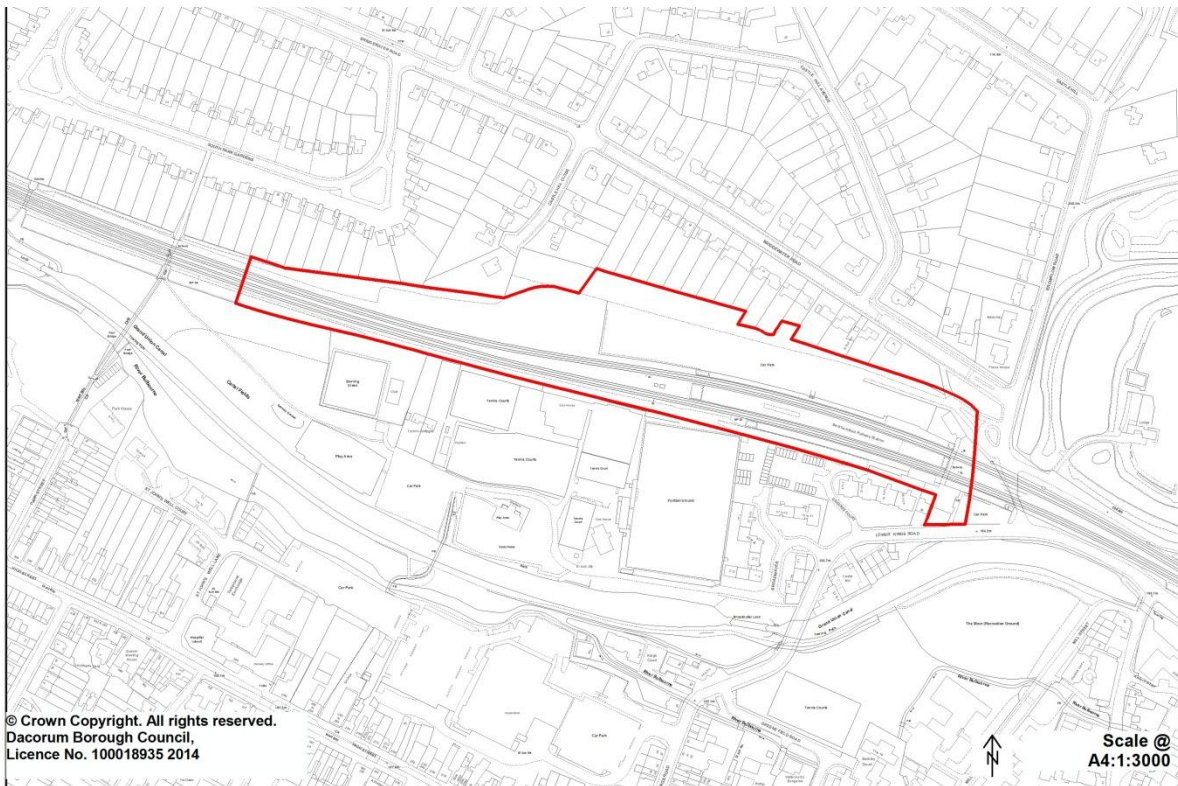
### T/14 Footpath network in Two Waters and Apsley



### T/15 Cycle routes for London Road with Station Road

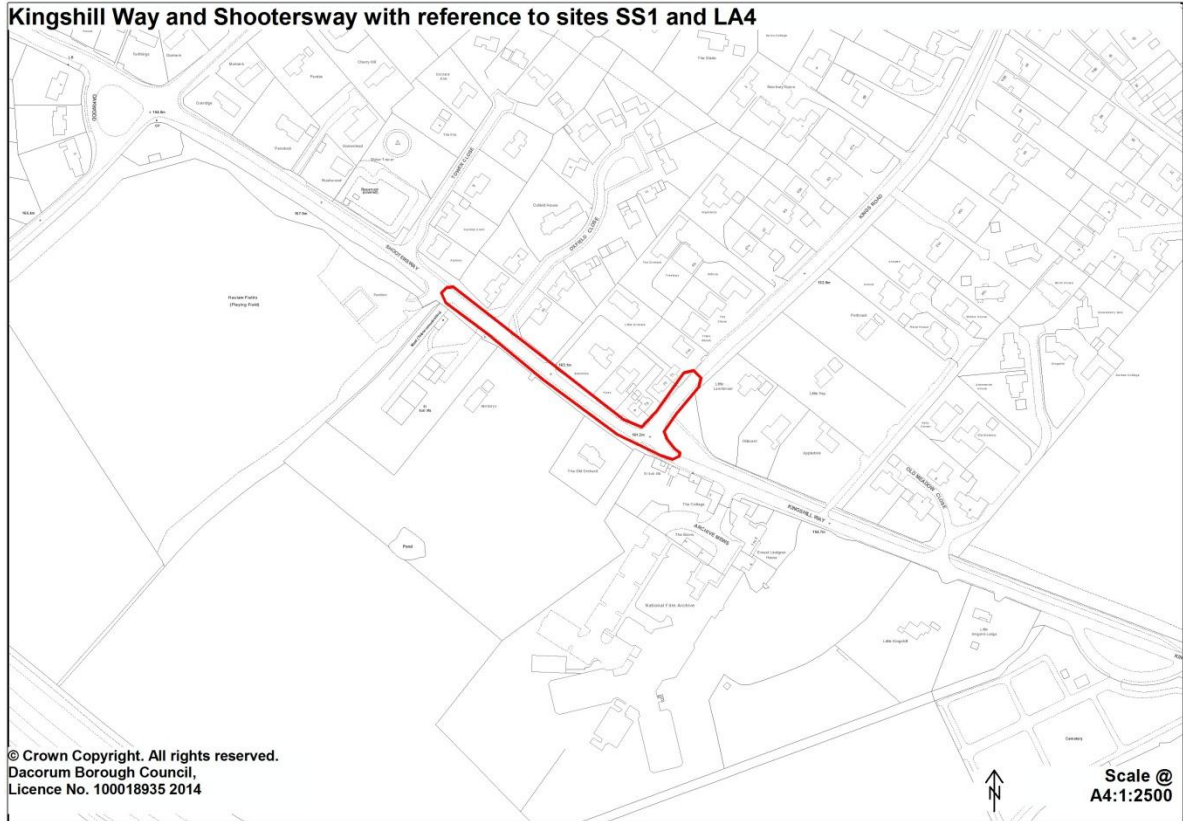


### T/16 Berkhamsted Railway Station

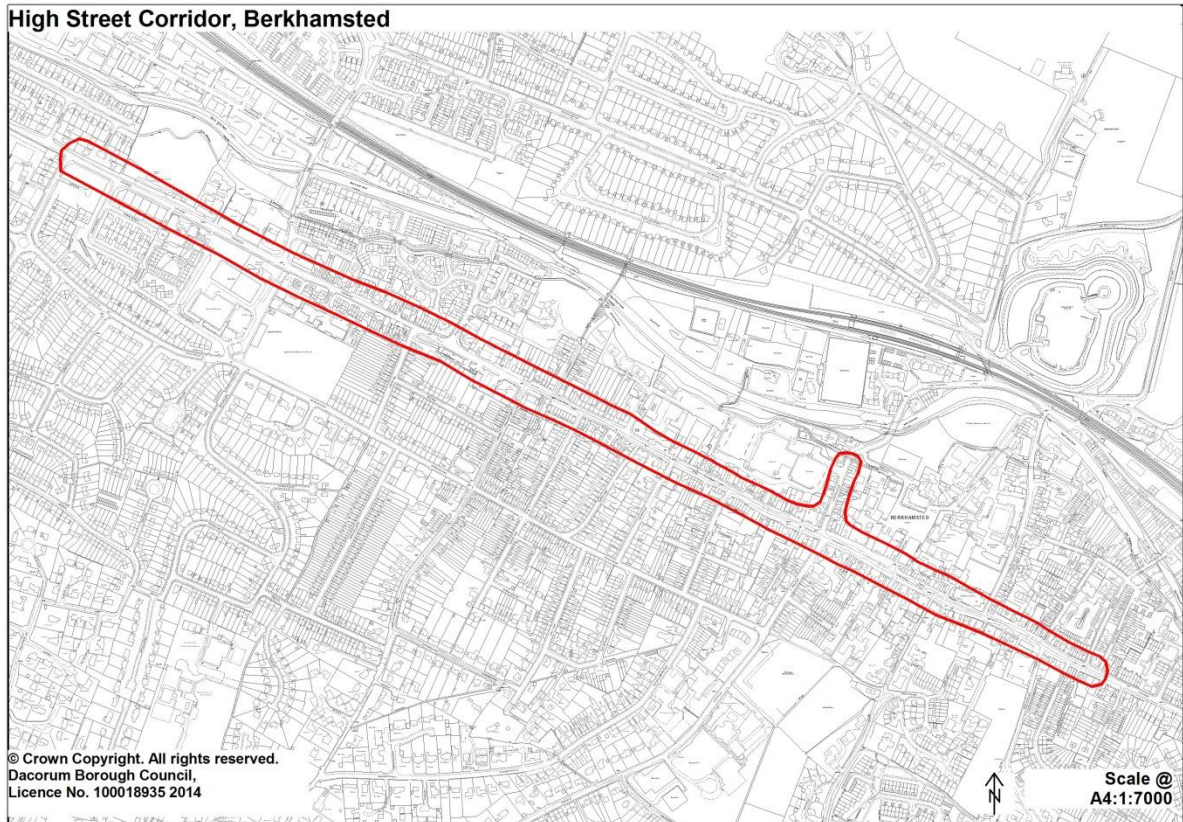




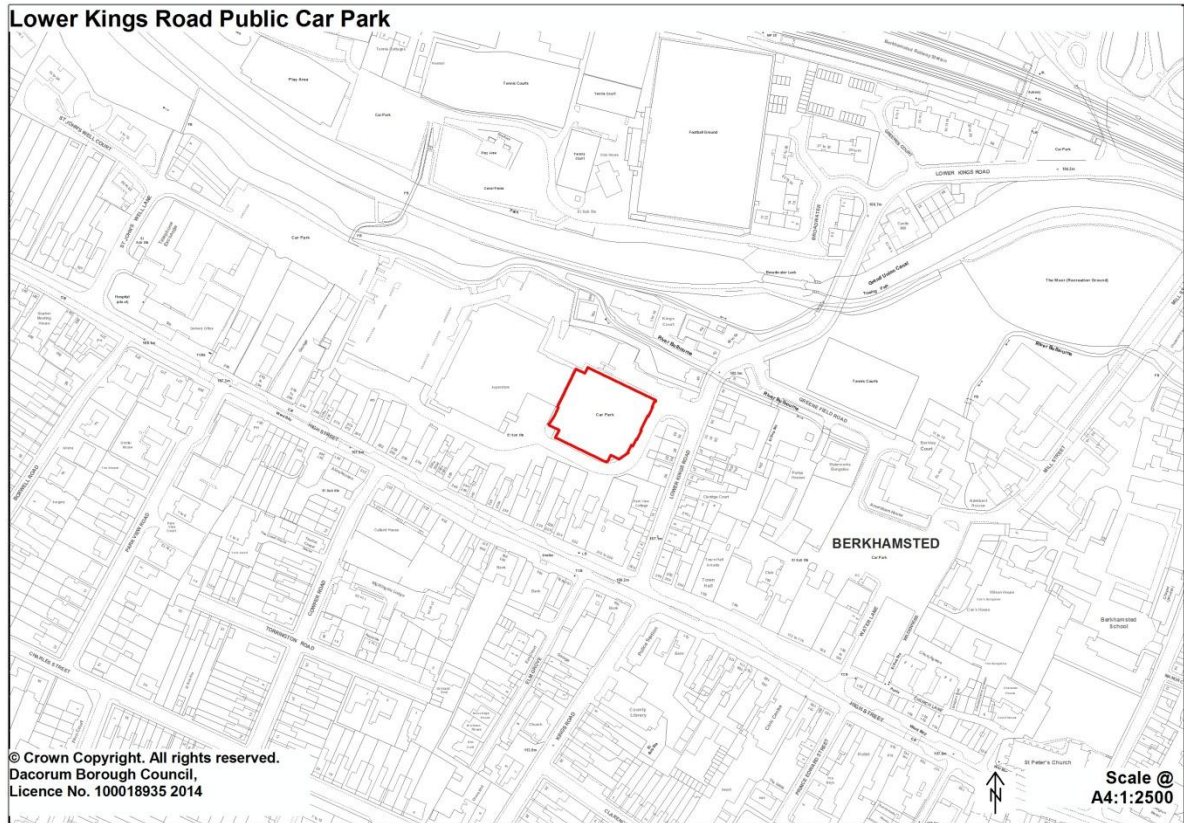
### T/17 Kingshill Way and Shootersway with reference to Sites SS1 and LA4



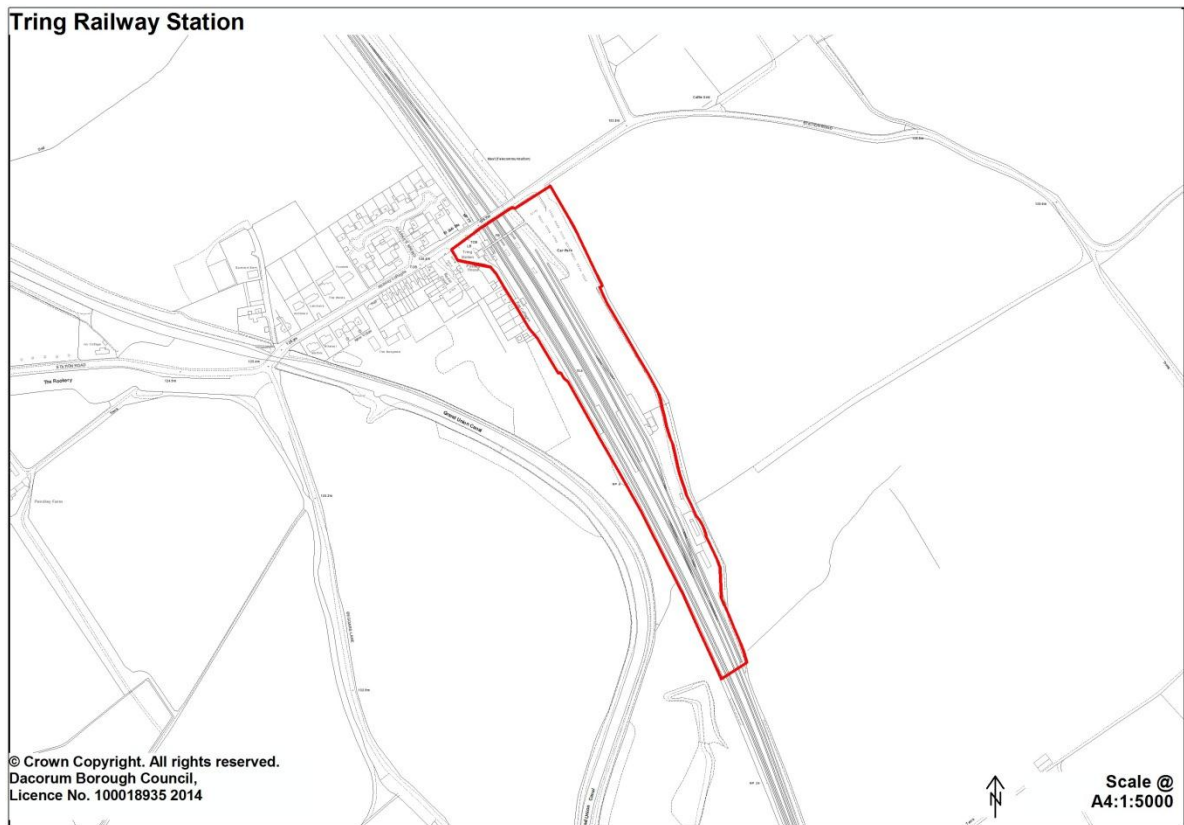
### T/18 High Street Corridor, Berkhamsted



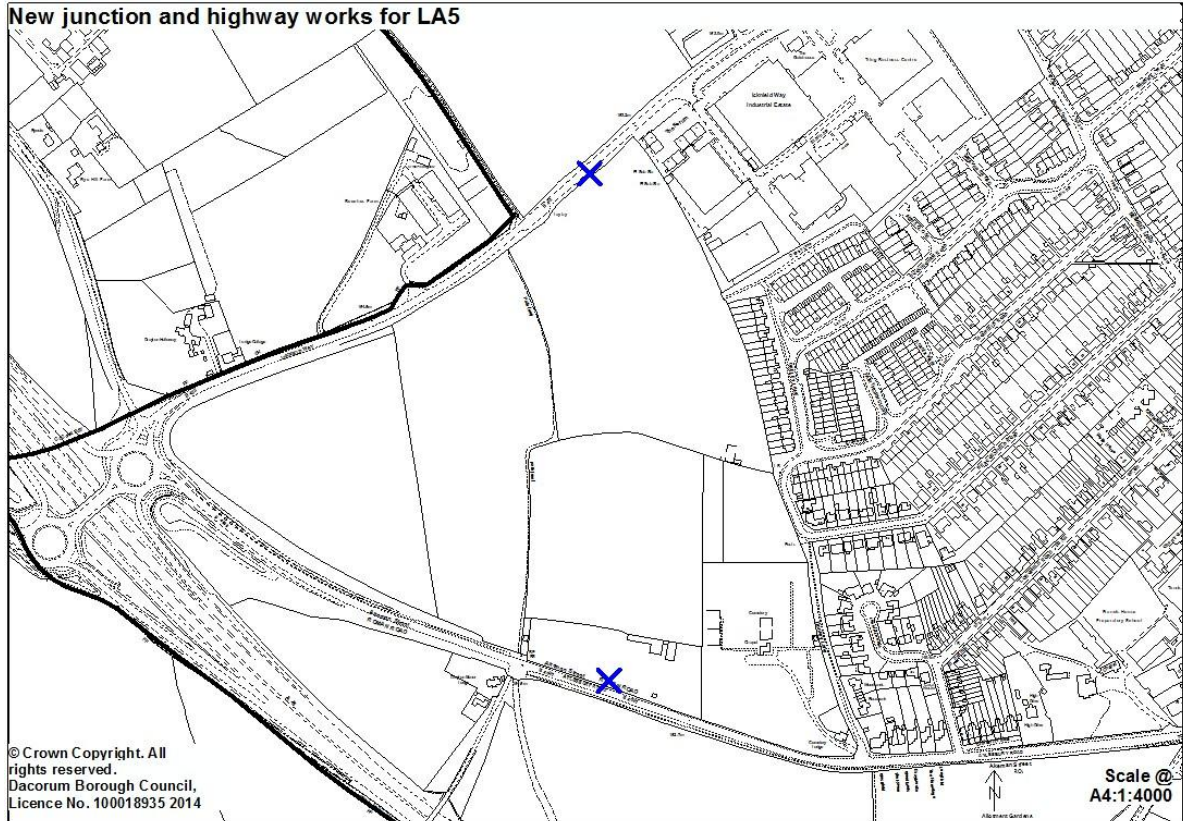
## T/19 Lower Kings Road Public Car Park



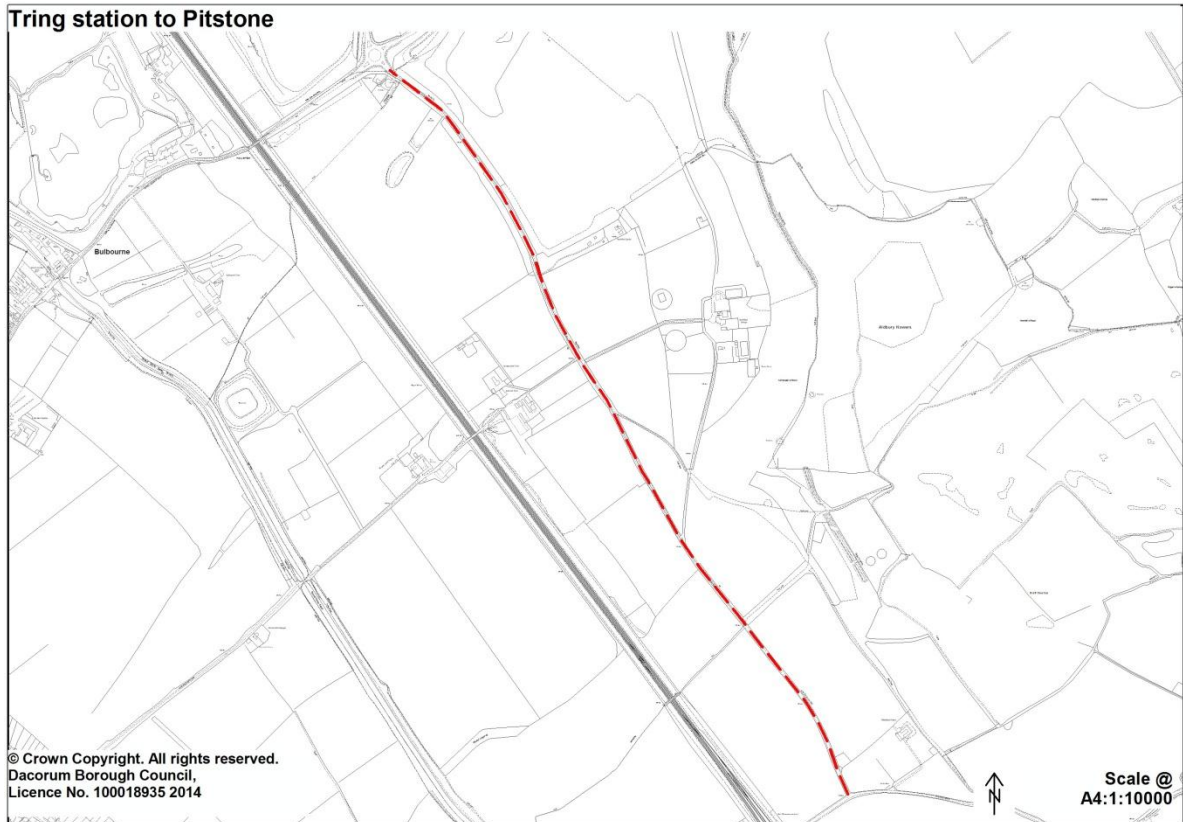
## T/20 Tring Railway Station



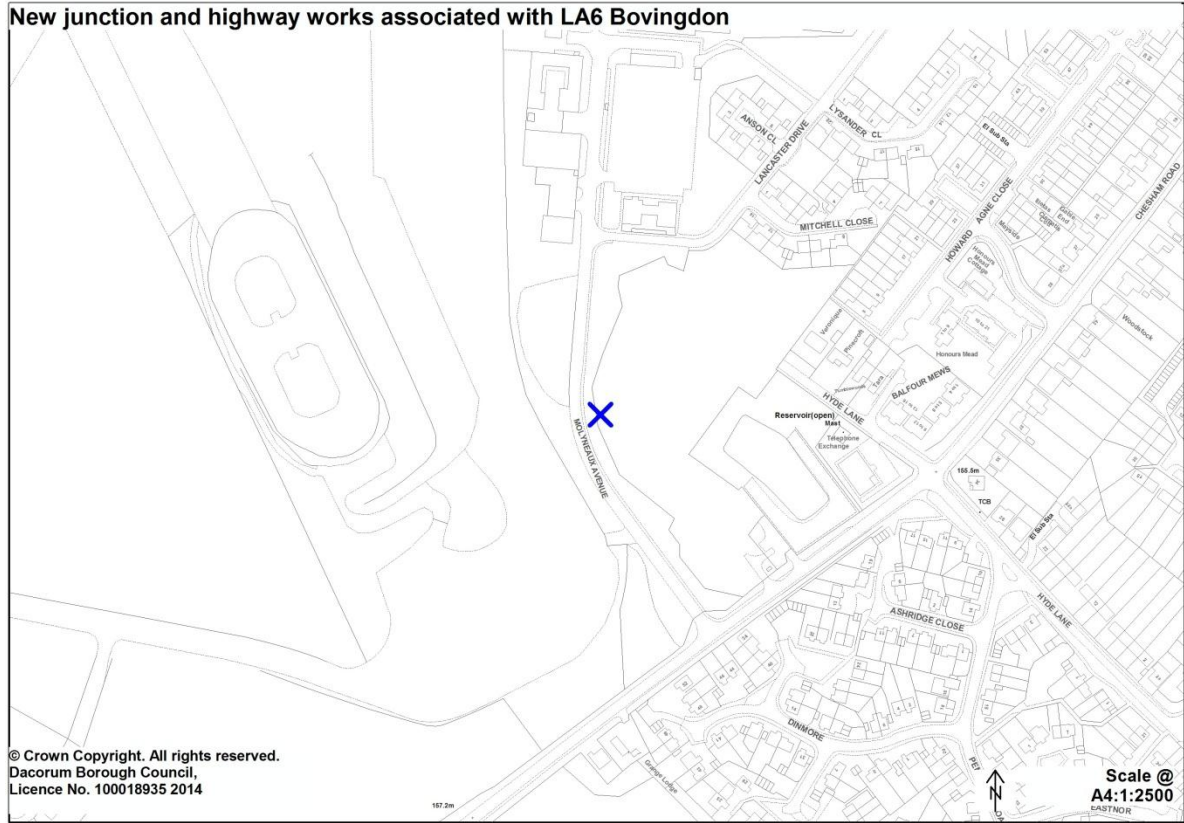
### T/21 New junction and highway works associated with development at LA5



### T/22 Tring Station to Pitstone



### T/23 New junction and highway works associated with development at LA6



## Dacorum Borough Local Plan Saved Schedule

The following proposal sites from the Dacorum Borough Local Plan 2004 that are within the boundary of the East Hemel Hempstead Area Action Plan (AAP) as defined on Figure 22 in the Core Strategy 2013 are saved. These proposal sites should be referenced with the prefix DBLP before the existing reference number. These will be reviewed as part of the forthcoming AAP and are listed for clarity:

<b>Extracts taken from Dacorum Borough Local Plan 2004 – Schedule of Transport Proposal Sites and Scheme</b>	
<b>Part I: Short Term Schemes and Proposal sites in relation to East Hemel Hempstead</b>	
Reference	DBLP T3
Scheme/Location:	Improvements to A414 Maylands Avenue Roundabout, Hemel Hempstead.
Agency:	HCC
Information and Requirements:	HCC/DBC consider that the proposal should be brought forward by developer contributions in association with major developments in Hemel Hempstead. Land outside the existing highway boundary may be required.
Progress	Slip lane scheme implemented 2001
Reference	DBLP T4
Scheme/Location:	Junction improvements to increase the capacity of A414 Breakspear Way Roundabout
Agency:	HCC/DfT
Information and Requirements:	HCC/DBC consider the proposal should be brought forward by developer contributions in association with major developments in Hemel Hempstead. Land outside the existing highway boundary may be required. Local Highway Authority scheme to be co-ordinated with works as part of Scheme T1 (M1 widening).
Progress	Hemel Hempstead Transportation Plan
Reference	DBLP T5
Scheme/Location:	Widening and junction improvements on Swallowdale Lane, Hemel Hempstead (from Three Cherry Trees Lane to Redbourn Road)
Agency:	HCC
Information and Requirements:	HCC/DBC consider that the proposal should be brought forward by developer contributions in association with major developments in Hemel Hempstead.
Progress	Hemel Hempstead Transportation Plan
Reference	DBLP T6
Scheme/Location:	Widening and junction improvements, A4147 Redbourn Road, Hemel Hempstead (Cupid Green to Queensway)
Agency:	HCC
Information and Requirements:	HCC/DBC consider that the proposal should be brought forward by developer contributions in association with major developments in Hemel Hempstead. Landscaping required in particular to screen open storage in the Swallowdale General Employment Area.
Progress	Hemel Hempstead Transportation Plan

Reference	DBLP T7
Scheme/Location:	Widening and junction improvements to complete North East Relief Road (line of existing Three Cherry Trees/ Green Lane)
Agency:	HCC
Information and Requirements:	HCC/DBC consider that the proposal should be brought forward by developer contributions in association with development at North East Hemel Hempstead (Proposals H18 and E4: see Schedules of Housing and Employment Proposal Sites respectively). Potential dual carriageway line to be safeguarded where appropriate. Initial single carriageway route could also be completed on dualling line shown in Hemel Hempstead Transportation Plan. This alternative line follows Punchbowl Lane in St Albans City and District. Landscaping to enhance boundary with Green Belt.
Progress	Hemel Hempstead Transportation Plan
Reference	DBLP T10
Scheme/Location:	Maylands Avenue industrial area lorry park
Agency:	Private or DBC
Information and Requirements:	Existing lorry park land to be safeguarded for this use unless a satisfactory alternative is available (see Policy 60).
<b>Part II: Long Term Schemes Schemes in relation to East Hemel Hempstead</b>	
Reference	DBLP Tiv
Scheme/Location:	Widening to dual carriageway of North East Relief Road, Hemel Hempstead
Agency:	HCC
Information and Requirements:	Details of scheme still to be decided. Will be a follow up to Scheme T7. Land to be reserved as part of development of Proposal Site E4 (see Schedule of Employment Proposal Sites).
Progress	Hemel Hempstead Transportation Plan Unprogrammed.
Reference	DBLP Tv
Scheme/Location:	Hemel Hempstead Cycle Route Network (within the AAP boundary)
Agency:	HCC/DBC
Information and Requirements:	Advisory routes and junction/crossing improvements. Details to be decided.
Progress	Incremental implementation from 1996/97.
Reference	DBLP Tvi
Scheme/Location:	Hemel Hempstead Pedestrian Route Network (within the AAP boundary)
Agency:	HCC/DBC
Information and Requirements:	Advisory routes and junction/crossing improvements. Details to be decided.
Progress	Incremental implementation from 1996/97.
Reference	DBLP Txi
Scheme/Location:	Hemel Hempstead Park and Ride Schemes
Agency:	HCC/DBC/Private (bus operators).
Information and Requirements:	Study carried out in 2002 to assess the potential for additional park and ride facilities identified two locations: <ul style="list-style-type: none"> <li>• Gadebridge Park</li> <li>• Breakspear Way</li> </ul>

---

Progress	The Gadebridge site is operational, but capable of enhancement.
----------	---

