

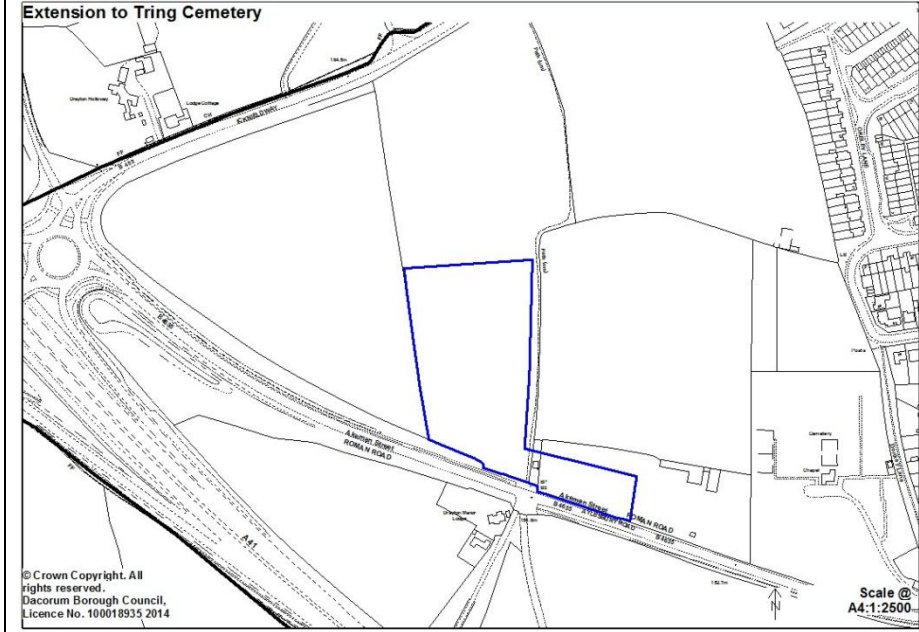
7. Meeting Community Needs

(a) Social and Community Facilities

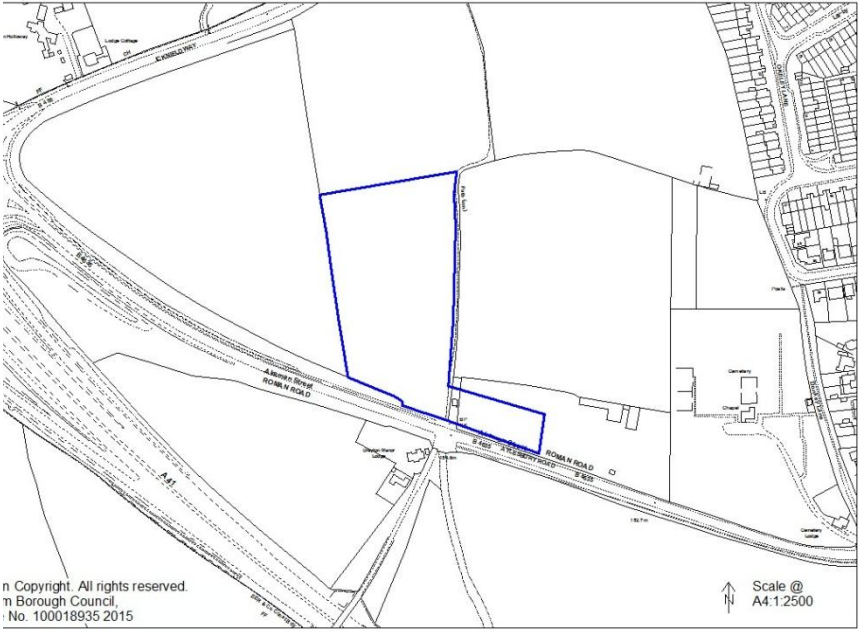
MC65 (below)

C/1 Tring Cemetery – new proposal

Map in previous Pre-submission document:

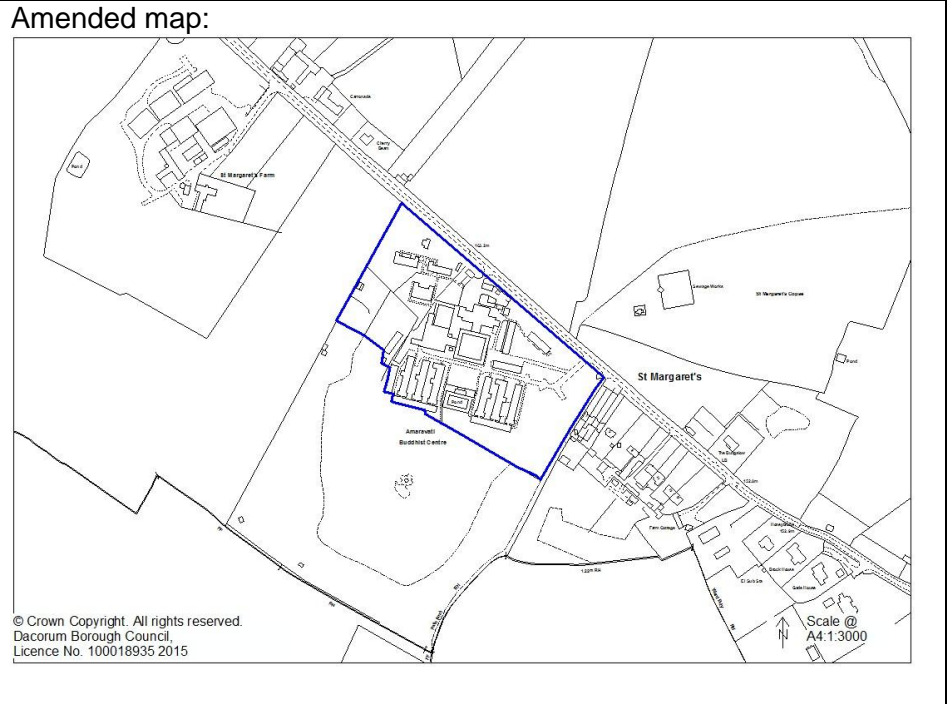
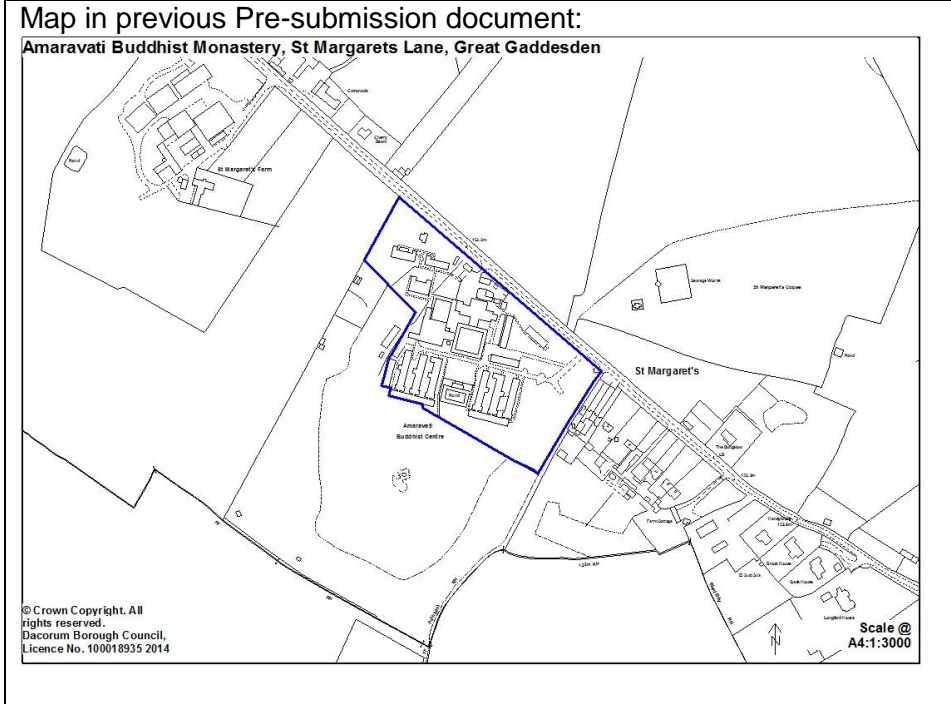


Amended map:



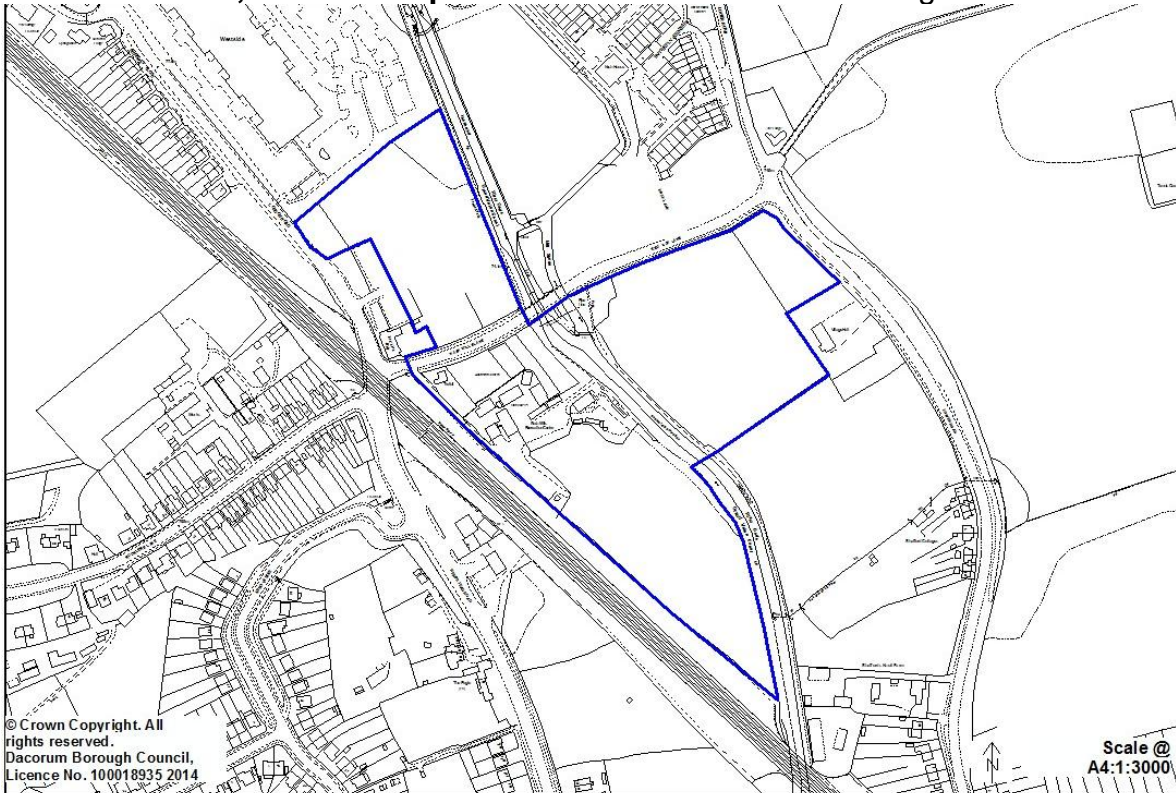
MC66 (below)

C/2 Amaravati Buddhist Monastery, St Margarets Lane, Great Gaddesden – new proposal

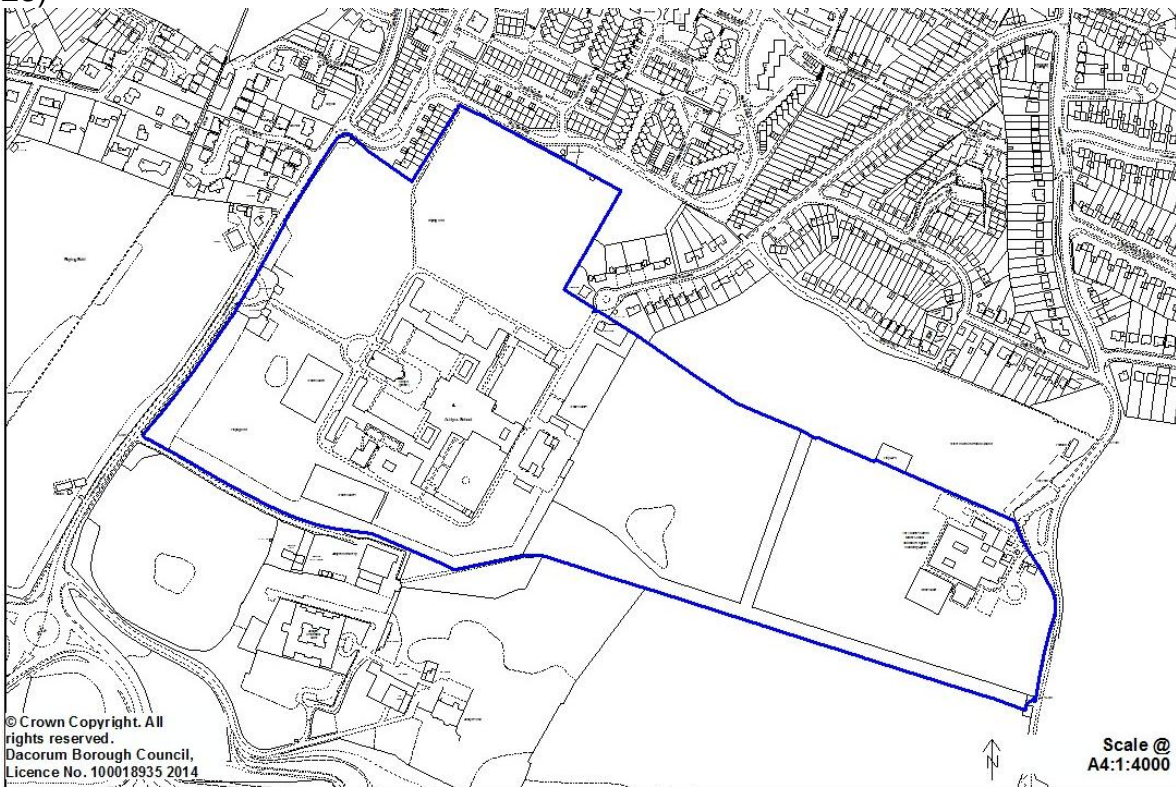


Education Zones

EZ/1 Nash Mills, Hemel Hempstead– new Education Zone designation

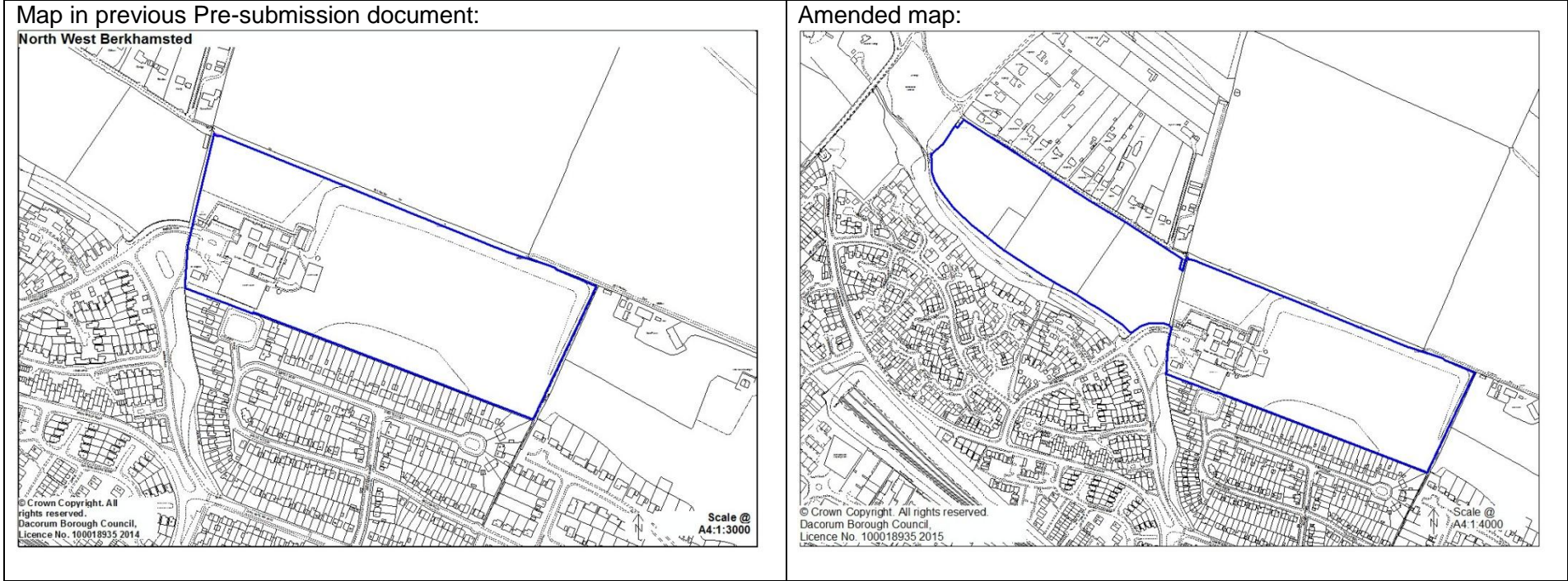


EZ/2 South East Berkhamsted – new Education Zone designation (see Core Strategy Figure 23)



MC62 (below)

EZ/3 North West Berkhamsted – new Education Zone designation (see Core Strategy Figure 23)



Dacorum Borough Local Plan 1991- 2011 Social and Community Facilities proposals

For clarification, the following Dacorum Borough Local Plan Schedule of Social and Community Facilities Proposal Sites will be deleted:

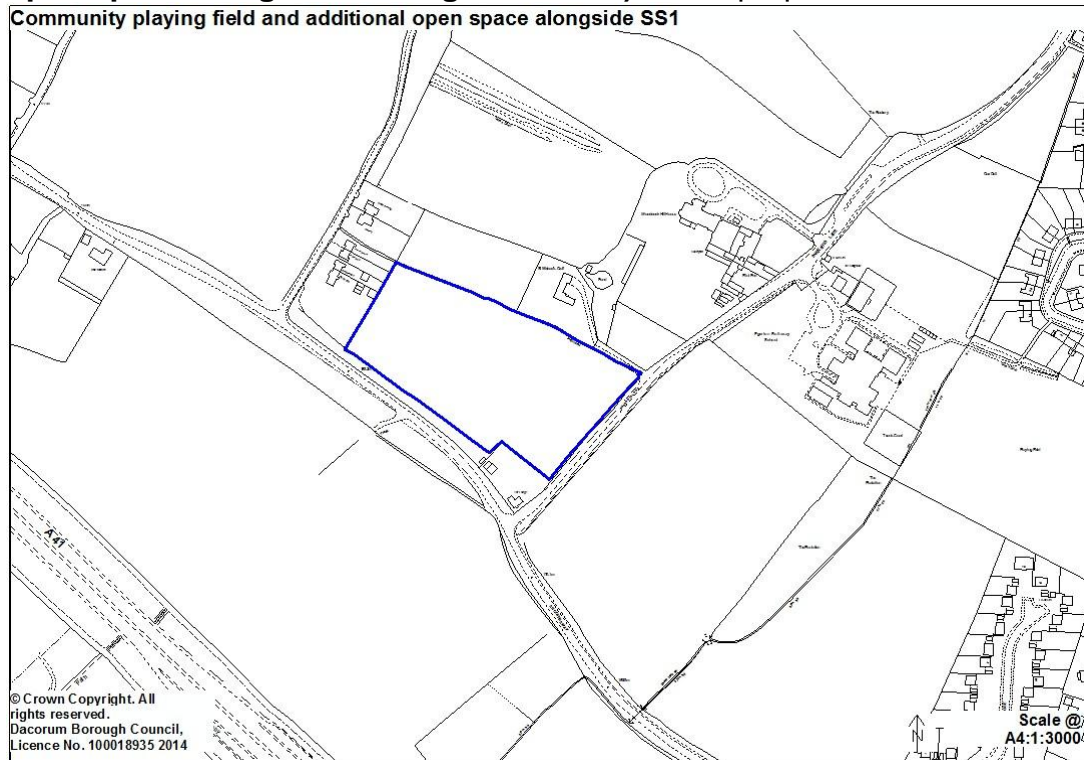
C1 - C5, and TWA20

Leisure and Cultural Facilities

L/1 Market Square and Bus Station, Marlowes/Waterhouse Street, Hemel Hempstead – new proposal



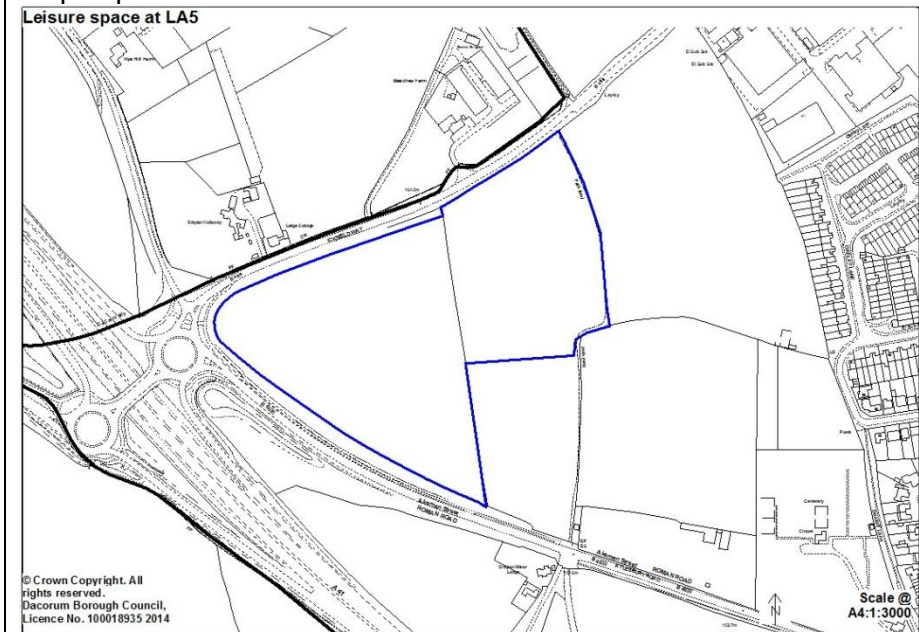
L/2 - Durrants Lane / Shootersway, Berkhamsted (community playing field and additional open space alongside Strategic Site SS1) – new proposal



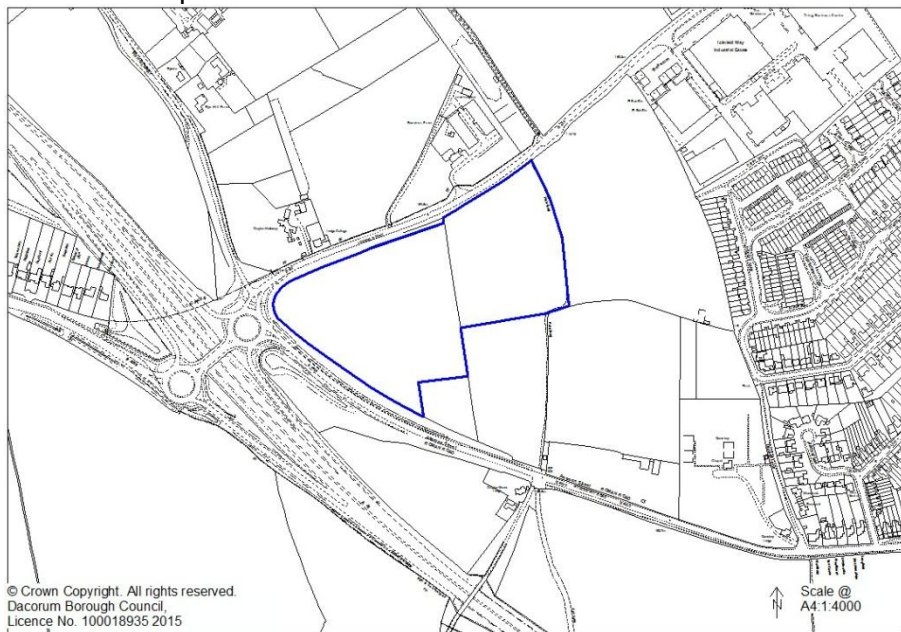
SC11 (below)

L/3 Leisure space at LA5 - Icknield Way, west of Tring – new proposal

Map in previous Pre-submission document:

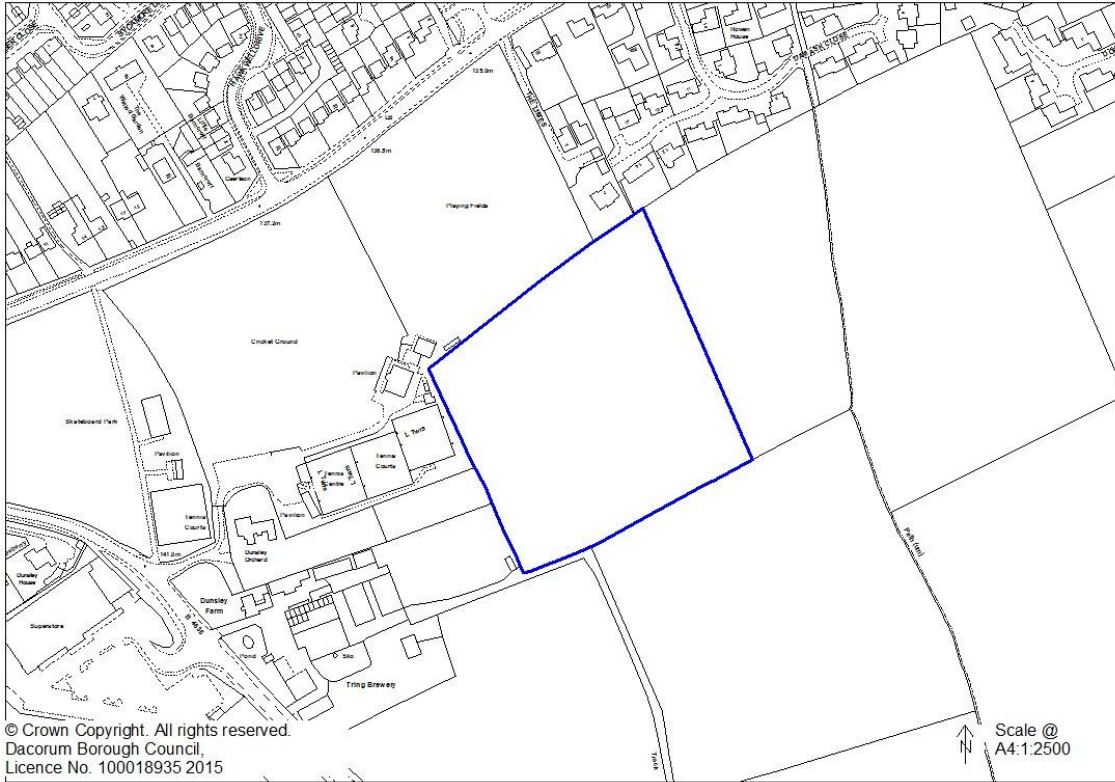


Amended map:



SC12 (below)

L/4 Dunsley Farm, Tring – new proposal



Open Land

The following Open Land designations are in addition to the sites identified in the Dacorum Borough Local Plan 1991 - 2011 and in the Vision Diagrams of the Core Strategy 2013

OL1 Hobletts School, Hemel Hempstead – new designation



OL2 Hunting Gate Wood, Hemel Hempstead – new designation



OL3 Tree Belt parallel to Maylands Avenue, Hemel Hempstead – new designation



OL4 Berkley Square / Cuffley Court / Bayford Close, Hemel Hempstead – new designation



OL5 Edgeworth House, High Street, Berkhamsted – new designation



Dacorum Borough Local Plan 1991- 2011 Leisure and Tourism proposals

For clarification, the following Dacorum Borough Local Plan Schedule of Leisure and Tourism Proposal Sites will be deleted and, where appropriate, carried forward on the Policies Map as new or amended proposals:

L1 - L5, L8 - L11 and TWA21 and TWA22

Dacorum Borough Local Plan 1991 – 2011 Saved Schedule

The following proposal sites from the Dacorum Borough Local Plan that are within the boundary of the East Hemel Hempstead Area Action Plan (AAP) as defined on Figure 22 in the Core Strategy 2013, are saved. These proposal sites should be referenced with the prefix DBLP before the existing reference number. These will be reviewed as part of the forthcoming AAP and are listed for clarity:

Extracts taken from Dacorum Borough Local Plan 1991 - 2011 – Schedule of Social and Community Facilities Proposal Sites in relation to East Hemel Hempstead Area Action Plan

| | |
|------------------|-------------------------------------|
| Reference | DBLP C6 |
| Scheme/Location: | Woodwells Cemetery, Hemel Hempstead |
| Area: | 8.5 ha |
| Proposal: | Land safeguarded for cemetery |

Extracts taken from Dacorum Borough Local Plan 1991 - 2011 – Schedule of Leisure and Tourism Proposal Sites in relation to East Hemel Hempstead Area Action Plan

| | |
|------------------|---|
| Reference | DBLP L6 |
| Scheme/Location: | Buncefield Lane, Hemel Hempstead |
| Area: | 1.8 ha |
| Proposal: | Existing touring, camping and caravan site. Land to be safeguarded from alternative development unless a satisfactory alternative is available (see Policy 95). |
| Reference | DBLP L7 |
| Scheme/Location: | Woodwells Farm, Buncefield Lane, Hemel Hempstead |
| Area: | 2.8 ha |
| Proposal: | Existing caravan storage site. Land to be safeguarded from alternative development. |

